

The Illinois Council and Missouri Society of
Health-System Pharmacists present

This document
is updated weekly.
Please check ichpnet.org
or moshp.com frequently
for changes!
Last updated
3/31/2011



Thursday, April 14 - Saturday, April 16, 2011

St. Charles Convention Center • St. Charles, MO

Hotel Information By popular demand, the 2011 ICHP/MSHP Spring Meeting will be located at the St. Charles Convention Center, One Convention Center Plaza which is connected to the Embassy Suites Hotel at Two Conference Center Plaza in St. Charles, MO 63303. Situated in the midst of St. Charles' 19th Century architecture and brick-paved streets, the Embassy Suites Hotel St. Louis – St. Charles merges history with modern accommodations.



All meeting attendees are responsible for making their own hotel reservations. The special convention rate of Single/Double: \$134.00; Triple: \$144.00; and Quad: \$154.00 will be available to ICHP/MSHP Spring Meeting attendees by calling the Embassy Suites Hotel at the toll free number 1-800-Embassy; or you may call the hotel directly at 1-636-946-5544. Please mention the "ICHP/MSHP 2011 Spring Meeting" as the conference name. **To guarantee these rates, reservations must be made prior to March 16, 2011.** Room rates include a cooked-to-order breakfast. Take advantage of the indoor heated pool, whirlpool and fitness center. Enjoy a great meal at the Cyprus Grille or coffee in Caffaina's Marketplace. For more information about the Embassy Suites Hotel, visit www.embassysuitesstcharles.com.

Guarantee these room rates by making your reservation with Embassy Suites by March 16!

AIRPORT INFORMATION: The Embassy Suites St. Louis-St. Charles is 7 miles from Lambert International Airport just off Interstate 70. Embassy Suites has arranged a special rate with two cab companies from the airport to the hotel. There is NO shuttle service from Embassy at this time. Procedure: Upon arrival at Lambert International, go to the red courtesy phone and dial 14 and say you are with the Embassy Suites. St. Charles Yellow Cab will respond and pick up for transport to the Embassy Suites. The cost is approximately \$19.



Meeting Information

The goal of the 2011 ICHP/MSHP Spring Meeting is to provide attendees, ranging from pharmacy students to directors, opportunities to plug into dynamic leadership training, attend a variety of continuing education courses, and network with colleagues.

The opening keynote address features Carol Rudman, PhD. She is a management development consultant and trainer, and President of Rudman Associates LLC. The topic of her presentation is "Tuning in to Your Emotional Intelligence." She will explain the components of emotional intelligence, identify why it is critical for effective leadership in a health-system pharmacy environment, and provide development techniques to enhance your leadership skills.

Friday and Saturday offer a variety of breakout sessions for all (see schedule of events in following pages to see what sessions are offered).

An Exhibit Showcase will convene during the morning and afternoon breaks on Friday. The Exhibit Showcase features vendors discussing latest therapies, technologies, and services.

A Poster Session and judging occur Friday evening and continues Saturday morning. Learn from other ICHP and MSHP members' research and see innovative ideas and trends in Illinois and Missouri health-system pharmacies.

Your evenings are free to enjoy what St. Charles has to offer. The hotel is just a short distance from Downtown St. Louis, Main Street, the Gateway Arch and Riverfront, Anheuser Busch Brewery, Ameristar Casino and Harrah's St. Louis Casino. The 200 year-old Main Street is Missouri's largest historic district with over 125 stores. There are many restaurants and wineries to delight in.

REGISTRATION

The 2011 ICHP/MSHP Spring Meeting registration desk is located at the St. Charles Conference Center upper level main entrance foyer.

The registration desk hours are:

Friday, April 15, 2011.....7:30 AM - 6:30 PM

Saturday, April 16, 2011.....7:00 AM - 4:30 PM

NAME BADGES

Name badges should be worn at all times as a courtesy to other meeting attendees. Your badge is your admission pass for all meeting sessions, exhibit programs, and break receptions.

MEETING DRESS CODE

The meeting dress code is business casual. The meeting room temperatures may vary - please remember to bring a sweater or jacket.

SMOKING POLICY

ICHP and MSHP advocate good health and wellness. Smoking is not permitted in any ICHP/MSHP Spring Meeting function. Smoking is only permitted in designated meeting smoking areas.

RESTRICTIONS ON EXHIBIT HALL ATTENDEES

ICHP and MSHP have limited the exhibit hall attendance to registered attendees only. Non-healthcare professionals may not attend the exhibit program.

ARRANGEMENTS FOR SPECIAL ASSISTANCE

If you have any disability for which you may require an auxiliary aid or special service while attending the ICHP/MSHP Spring Meeting, please talk to the staff at the registration desk.

FACULTY DISCLOSURE

It is the policy of the Illinois Council of Health-System Pharmacists (ICHP) and the Missouri Society of Health-System Pharmacists (MSHP) to ensure balance, independence, objectivity, and scientific rigor in all of its education programs. In accordance with this policy, faculty must disclose to the participants any significant relationships with commercial companies whose products or devices may be mentioned in faculty presentations, or with the commercial supporter of these continuing pharmacy education programs. These disclosures are included in the syllabus and will be announced during the program.

Continuing Education Credits

CONTINUING PHARMACY EDUCATION CREDIT

All education sessions will be offered for CE credit and registrants may earn up to 10 contact hours (1.0 CEUs) at this meeting (ICHP determines the number of credit hours for each session).

At the present time, the Pharmacy Technician Certification Board (PTCB), the Missouri Board of Pharmacy and the Illinois Board of Pharmacy do not require technicians to participate in 'T,' or technician-specific continuing education for re-certification or relicensure purposes. Therefore, technicians are welcome to participate in programming that is either 'P' or 'T' and will receive CE credit for either type, provided they meet all applicable program requirements.

ACCREDITATION



The Illinois Council of Health-System Pharmacists is accredited by the Accreditation Council for Pharmacy Education as a provider of continuing pharmacy education. Registrants at the ICHP/MSHP 2011 Spring Meeting may earn a maximum of 10 contact hours of continuing pharmacy education in states that recognize ACPE providers (9 from ICHP and 1 from ASHP Advantage).

ACPE UNIVERSAL ACTIVITY NUMBERS:

121-000-11-007-L04-P	121-000-11-010-L04-T	121-000-11-014-L01-T	121-000-11-018-L03-T
121-000-11-007-L04-T	121-000-11-011-L04-P	121-000-11-015-L01-P	121-000-11-019-L03-P
121-000-11-008-L04-P	121-000-11-012-L04-T	121-000-11-016-L04-P	121-000-11-019-L03-T
121-000-11-008-L04-T	121-000-11-012-L04-P	121-000-11-016-L04-T	204-000-11-409-L01-P
121-000-11-009-L04-P	121-000-11-013-L04-T	121-000-11-017-L04-P	
121-000-11-010-L04-P	121-000-11-013-L04-P	121-000-11-018-L03-P	

GOALS OF THE 2011 SPRING MEETING EDUCATIONAL PROGRAMMING ARE TO:

1. Identify key components to enhance leadership in every day pharmacy practice.
2. Address current issues and new therapies in clinical practice.
3. Outline the impact of changes in the current pharmacy practice model on patient outcomes and the profession.
4. Discuss the benefits of pharmacy education and training.
5. Describe the importance and implementation of pharmacy residency training programs and how they influence the future of pharmacy practice.
6. Review the effects of new safety regulations and drug shortages on daily pharmacy activities.

PROGRAM EVALUATIONS AND STATEMENTS OF CREDIT : ONLINE ONLY!

In order to receive continuing pharmacy education credit, all meeting attendees will need to access HealthsystemCE.org to complete evaluations and download statements of credit. HealthsystemCE.org is a website designed to meet the educational needs of health-system pharmacists and pharmacy technicians.

You will have 2 weeks after the Spring Meeting to complete your online evaluations and submit your request for statements of credit. Do not delay in completing your evaluations and downloading / printing your statement of credit.

Instructions for completing live program evaluations online and downloading statements of credit will be included in the meeting folder provided to you at meeting registration.

Faculty

Heather M. Arnold, PharmD, BCPS

Critical Care Pharmacy Specialist
Barnes-Jewish Hospital
St. Louis, MO

Jennifer Arnoldi, PharmD

Clinical Assistant Professor
Southern Illinois University Edwardsville
School of Pharmacy
Internal Medicine Specialist
St. John's Hospital of Springfield
Edwardsville, IL

Jered Bauer, PharmD

Clinical Pharmacy Consultant
Aspen Healthcare Metrics
St. Louis, MO

Leigh Boehmer, PharmD, BCOP

Clinical Pharmacist, Medical Oncology
Barnes-Jewish Hospital
St. Louis, MO

Kevin J. Colgan, BS, PharmD, MA Health Services Administration

Corporate Director of Pharmacy
Rush University Medical Center
Chicago, IL

Amanda L. Cook, PharmD Candidate 2012

UMKC-SSHP President
University of Missouri-Kansas City
School of Pharmacy
Columbia Satellite Program
Columbia, MO

Lara Ellinger, PharmD

PGY-1 Resident
Northwestern Memorial Hospital
Chicago, IL

Michael Fotis, BS Pharm

*Manager Drug Information and Drug Use Policy;
Residency Director*
Northwestern Memorial Hospital
Chicago, IL

Daniel Good, MS, RPh

System Director
CoxHealth
Springfield, MO

Jeremy P. Hampton, PharmD, BCPS

Clinical Assistant Professor
University of Missouri-Kansas City
School of Pharmacy
Clinical Specialist Emergency Medicine
Truman Medical Center Emergency Department
Kansas City, MO

Chris Herndon, PharmD, BCPS

Assistant Professor
Southern Illinois University at Edwardsville
School of Pharmacy
Residency Coordinator
Healthcare Foundation Family Medicine Residency Program
Edwardsville, IL

Heath R. Jennings, PharmD, BCPS (AQ Cardiology)

*Director of Pharmacy Acute Services; Director of
Graduate Pharmacy Education; PGY-1
Residency Program Director*
University of Chicago Medical Center
Chicago, IL

Paul Juang, PharmD

Assistant Professor of Pharmacy Practice
St. Louis College of Pharmacy
MICU Clinical Pharmacist
Barnes-Jewish Hospital
St. Louis, MO

Anthony C. Kessels, PharmD, BCPS, FASHP

Manager, Medication Safety
Barnes-Jewish Hospital
St. Louis, MO

Mary Ann Kliethermes, BS, PharmD

Vice-Chair Ambulatory Care; Associate Professor
Midwestern University
Chicago College of Pharmacy
Downers Grove, IL

Amber J. Lucas, PharmD, BCPS, FASHP

Clinical Pharmacy Specialist
Saint Luke's Hospital of Kansas City
Kansas City, MO

Kathleen A. Lusk, PharmD

PGY-1 Resident
St. Luke's Hospital
Chesterfield, MO

Ali McBride, PharmD, MS, BCPS

*Clinical Pharmacy Specialist Hematologic
Malignancies/Bone Marrow Transplant*
Alvin J. Siteman Cancer Center
Barnes-Jewish Hospital
St. Louis, MO

Bert McClary, RPh

Pharmacist Consultant
Missouri Department of Health and Senior Services
Jefferson City, MO

Tatum N. Mead, PharmD

Clinical Assistant Professor
University of Missouri-Kansas City
School of Pharmacy
Clinical Specialist
Family Medicine Residency Program at
Research Medical Center of Kansas City
Kansas City, MO

Scott Micek, PharmD, BCPS

Clinical Pharmacist, Medical Intensive Care
Barnes-Jewish Hospital
St. Louis, MO

Crystal Obering, PharmD, MBA, BCPS

Clinical Associate Professor
University of Missouri-Kansas City
School of Pharmacy
Clinical Pharmacy Specialist in Geriatrics
Kansas City Veterans Affairs Medical Center
Kansas City, MO

Carol Rudman, PhD

*Management Development Consultant and
Trainer; President*
Rudman Associates LLC
New York, NY

Amber M. Sawyer, PharmD, BCPS

Critical Care Pharmacy Specialist
University of Missouri Hospital and Clinics
Columbia, MO

Nancy L. Shapiro, PharmD, FCCP, BCPS

*Operations Manager, Antithrombosis Clinic;
Director, Ambulatory Care Residency*
University of Illinois at Chicago
College of Pharmacy
Chicago, IL

Rowena N. Schwartz, PharmD

Director Oncology Pharmacy
The Johns Hopkins Hospital
Baltimore, MD

Christine Swyers, RPh, PharmD

Pharmacy Manager
Barnes-Jewish Hospital
St. Louis, MO

Greg Teale, PharmD

Pharmacy Operations Manager
Saint Luke's East Hospital and Crittenton
Children's Center
Lee's Summit, MO

Carrie N. Vogler, PharmD

Clinical Assistant Professor
Southern Illinois University at Edwardsville
School of Pharmacy
*Clinical Pharmacist and Assistant Professor of
Medicine and Pharmacy Practice*
Southern Illinois University Edwardsville
School of Medicine, Department of General
Internal Medicine at Memorial Medical Center
Edwardsville, IL

Eric Wombwell, PharmD, BCPS

Clinical Assistant Professor
University of Missouri-Kansas City
School of Pharmacy
Kansas City, MO

Schedule of Events

REGISTRATION, MEETINGS AND CE SESSIONS WILL BE HELD IN THE ST. CHARLES CONVENTION CENTER

Thursday, April 14, 2011

2:00 PM - 5:00 PM ICHP BOARD MEETING

Location: Room 103

1:00 PM - 2:30 PM MSHP R&E FOUNDATION STRATEGIC PLANNING MEETING

Location: Room 102

2:30 PM - 5:00 PM MSHP BOARD MEETING

Location: Room 102

Friday, April 15, 2011

7:00 AM - 8:30 AM MSHP RESEARCH AND EDUCATION FOUNDATION FUNDRAISER

Location: Board Room

7:30 AM - 8:30 AM CONTINENTAL BREAKFAST

Location: Upper level main entrance foyer (*Please note: A complimentary cooked-to-order breakfast is also available to registered guests of the Embassy Suites from 6:00 AM - 9:00 AM in the hotel atrium.*)

7:30 AM - 6:30 PM REGISTRATION

Location: Upper level main entrance foyer

8:30 AM - 9:00 AM ANNOUNCEMENTS AND MEETING BUSINESS

Location: Grand Ballroom D

9:00 AM - 10:30 AM KEYNOTE ADDRESS

Location: Grand Ballroom D

Tuning in to Your Emotional Intelligence 

Speaker: Carol Rudman, PhD

ACPE Universal Activity Number: 121-000-11-007-L04-P, 121-000-11-007-L04-T

1.5 contact hours Type of Activity: Knowledge-based

Upon completion of this program, participants should be able to:

1. List and explain the 4 components of emotional intelligence (EI).
2. Assess skills in each of the components.
3. Identify at least 5 reasons why EI is critical for effective leadership in a health-system pharmacy environment.
4. Choose 3 techniques to build self awareness skills to enhance leadership skills in pharmacy and daily activities.
5. Choose 3 techniques to build self management skills to enhance leadership skills in pharmacy and daily activities.
6. List the Eight-As technique for controlling defensiveness.

10:30 AM - 12:00 PM EXHIBIT SHOWCASE AND BREAK RECEPTION

Location: Grand Ballroom and Foyer

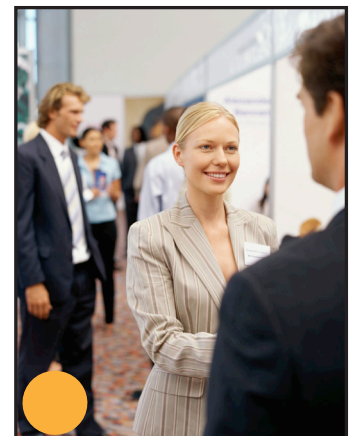


Image Disclaimer
© 2011 Thinkstock, a division of Getty Images

Schedule of Events

REGISTRATION, MEETINGS AND CE SESSIONS WILL BE HELD IN THE ST. CHARLES CONVENTION CENTER

Friday, April 15, 2011 - continued

12:00 PM - 1:30 PM LUNCH SYMPOSIUM

Location: Grand Ballroom D

Optimizing Bone Health in Cancer Patients (PLANNED AND CONDUCTED BY ASHP ADVANTAGE AND SUPPORTED BY AN EDUCATIONAL GRANT FROM NOVARTIS ONCOLOGY)

Speaker: Rowena N. Schwartz, PharmD

ACPE Universal Activity Number: 204-000-11-409-L01P

1 contact hour Type of Activity: Knowledge-based

For full program information, go to www.ichpnet.org/calendar/spring_meetings/2011/opt_bone_health.pdf

Upon completion of this program, participants should be able to:

1. Describe the prevalence, morbidity, mortality, and impact on quality of life of skeletal-related events in patients with cancer.
2. Explain normal bone remodeling and the pathogenesis of skeletal-related events in patients with cancer.
3. Discuss the mechanism of action, efficacy, and safety of agents used for treating bone metastases and slowing or preventing cancer treatment-induced bone loss (CTIBL).
4. Recommend a pharmacologic regimen for a patient with bone metastases or CTIBL.
5. Identify new or emerging bone-targeted therapies for patients with bone metastases and describe mechanisms of action and potential roles in improving bone health in cancer patients.

1:30 PM - 2:30 PM Breakout Sessions - 2 Tracks To Choose From

1:30 PM - 2:30 PM TRACK 1 - LEADERSHIP SESSION

Location: Grand Ballroom D



Adding to Your Emotional Intelligence Skills

Speaker: Carol Rudman, PhD

ACPE Universal Activity Number: 121-000-11-008-L04-P, 121-000-11-008-L04-T

1 contact hour Type of Activity: Application-based

Upon completion of this program, participants should be able to:

1. Develop a vocabulary of feelings.
2. Defend how to experience and manage, or not manage, emotions during emotionally-laden work situations.
3. Demonstrate the importance of and techniques for taking charge of their work in the health-system pharmacy environment.
4. List and discuss 21 components of trustworthiness to employ as a leader in pharmacy and in daily activities.
5. Identify and demonstrate 3 ways to increase trustworthiness among pharmacy colleagues.

1:30 PM - 2:30 PM TRACK 2 - DEVELOPMENT SESSION

Location: Room 105

Be All That You Can Be

Speaker: Anthony Kessels, PharmD, BCPS, FASHP

ACPE Universal Activity Number: 121-000-11-009-L04-P

1 contact hour Type of Activity: Knowledge-based

Upon completion of this program, participants should be able to:

1. State the 4 residency preceptor roles.
2. Describe activities and accomplishments that satisfy the ASHP preceptor accreditation standard.
3. Identify the important elements of a pharmacy residency preceptor development program.

Schedule of Events

REGISTRATION, MEETINGS AND CE SESSIONS WILL BE HELD IN THE ST. CHARLES CONVENTION CENTER

Friday, April 15, 2011 - continued

2:30 PM - 4:00 PM EXHIBIT SHOWCASE AND BREAK RECEPTION

Location: Grand Ballroom and Foyer



Visit exhibitor booths and enjoy some hors d'oeuvres!

4:00 PM - 5:30 PM Breakout Sessions - 2 Tracks To Choose From

4:00 PM - 5:30 PM TRACK 1 - CHANGES IN PHARMACY PRACTICE SESSION



SUPPORTED BY EDUCATIONAL GRANT FROM MERCK

Location: Grand Ballroom D

REMS - Mitigating the Elements, Drug Shortages, and Panel

Speakers: Michael Fotis, BS Pharm and Ali McBride, PharmD, MS, BCPS

ACPE Universal Activity Number: 121-000-11-010-L04-P, 121-000-11-010-L04-T

1.5 contact hours Type of Activity: Knowledge-based

- **REMS - Mitigating the Elements**

Upon completion of this program, participants should be able to:

1. Review the history of Risk Evaluation and Mitigation Strategies (REMS).
2. List and discuss the components of REMS.
3. Describe the impact of REMS in the marketplace.

- **Navigating Through Medication Shortages**

Upon completion of this program, participants should be able to:

1. List reasons for medication shortages.
2. Outline management strategies for medication shortages.
3. Describe potential safety issues resulting from medication shortages.

4:00 PM - 5:30 PM TRACK 2 - PHARMACY PRACTICE SESSION

Location: Room 105

You Can Do It! How to Start a Residency

Speakers: Chris Herndon, PharmD, BCPS and Heath R. Jennings, PharmD, BCPS (AQ Cardiology)

ACPE Universal Activity Number: 121-000-11-011-L04-P

1.5 contact hours Type of Activity: Knowledge-based

Upon completion of this program, participants should be able to:

1. Describe an estimated budget necessary to fund a residency program.
2. List resources available to assist with starting a residency.
3. Describe the need for additional residency training sites.
4. State the benefits of having residency training available in small or rural hospitals.

5:30 PM - 6:30 PM POSTER SESSION AND JUDGING

Location: Foyer



Learn from your colleagues! Check out research in the foyer to see innovative ideas and trends in Illinois and Missouri health-system pharmacy.

 Symbol indicates programs that lend themselves to pharmacy technician attendance

Schedule of Events

REGISTRATION, MEETINGS AND CE SESSIONS WILL BE HELD IN THE ST. CHARLES CONVENTION CENTER

Saturday, April 16

7:00 AM - 4:30 PM REGISTRATION
Location: Upper level main entrance foyer

7:00 AM - 8:30 AM MSHP PAST PRESIDENTS' BREAKFAST
Location: Grand Ballroom D1

7:00 AM - 8:30 AM NEW PRACTITIONERS LEADERSHIP BREAKFAST
Location: Grand Ballroom D2

7:00 AM - 8:30 AM CONTINENTAL BREAKFAST
Location: Upper level main entrance foyer (*Please note: A complimentary cooked-to-order breakfast is also available to registered guests of the Embassy Suites from 6:00 AM - 9:00 AM in the hotel atrium.*)

8:00 AM - 9:00 AM POSTER SESSION AND JUDGING CONTINUES
Location: Foyer

9:00 AM - 11:30 AM Breakout Sessions - 3 Tracks To Choose From

9:00 AM - 11:30 AM TRACK 1 - TECHNICIAN SESSION
Location: Grand Ballroom B

Should Pharmacists Double Check if a Tech Checks Tech? 

Speaker: Lara Ellinger, PharmD

ACPE Universal Activity Number: 121-000-11-012-L04-T, 121-000-11-012-L04-P

0.50 contact hour Type of Activity: Knowledge-based

ASHP Accreditation of Pharmacy Technician Training Programs 

Speaker: Christine Swyers, RPh, PharmD

ACPE Universal Activity Number: 121-000-11-013-L04-T, 121-000-11-013-L04-P

0.5 contact hour Type of Activity: Knowledge-based

Upon completion of this program, participants should be able to:

1. Recognize the benefits of attending an ASHP accredited pharmacy technician training program.
2. Describe the national movement towards certification.
3. Identify the ways certification and accredited training can improve career flexibility.

*Break:
10:00 AM - 10:30 AM*

Intravenous Medications in the Intensive Care Unit 

Speaker: Paul Juang, PharmD

ACPE Universal Activity Number: 121-000-11-014-L01-T

Upon completion of this program, participants should be able to:

1. Describe the pharmacology of common intravenous medications used in the Intensive Care Unit (ICU).
2. Explain the potential uses of common intravenous medications used within the ICU.
3. Describe the potential role of pharmacy technicians in the safe medication use process within an ICU.

Schedule of Events

REGISTRATION, MEETINGS AND CE SESSIONS WILL BE HELD IN THE ST. CHARLES CONVENTION CENTER

Saturday, April 16 - continued

9:00 AM - 11:30 AM **TRACK 2 - STUDENT SESSION**

Location: Room 103

Leadership Navigation: The GPS for Success

- ***What is a Leader?***
Speaker: Amber M. Sawyer, PharmD, BCPS
- ***What Type of Leader Are You?***
Speaker: Heather M. Arnold, PharmD, BCPS
- ***The "Here and Now": How Can Students Get Involved?***
Speaker: Amanda L. Cook, PharmD Candidate 2012
- ***The "In-Between" Phase: Transition from Student to Resident***
Speaker: Kathleen A. Lusk, PharmD
- ***The "Real Deal": Success in the Real World***
Speaker: Eric Wombwell, PharmD, BCPS

Break:
10:00 AM - 10:30 AM

Upon completion of this program, participants should be able to:

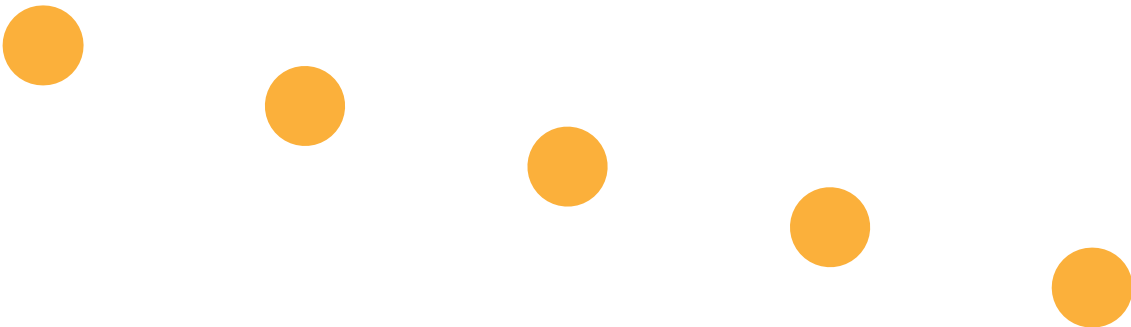
1. Define leadership and explain its importance and functionality in pharmacy practice.
2. Compare and contrast different leadership styles.
3. Discuss opportunities available for development of leadership skills as a student, resident, and new practitioner.

Bridging the Gap: The Generational Divide

Speakers: Carrie N. Vogler, PharmD, and Jennifer Arnoldi, PharmD

Upon completion of this program, participants should be able to:

1. Explain how generational differences influence communication and interpersonal dynamics.
2. Recognize intergenerational perceptions and their impact on professionalism.
3. Describe generational differences when setting expectations for obtaining and providing high quality feedback.



Schedule of Events

REGISTRATION, MEETINGS AND CE SESSIONS WILL BE HELD IN THE ST. CHARLES CONVENTION CENTER

Saturday, April 16 - continued

9:00 AM - 11:30 AM TRACK 3 - CLINICAL PEARLS

Location: Grand Ballroom A

ACPE Universal Activity Number: 121-000-11-015-L01-P

2 contact hours Type of Activity: Knowledge-based

- **What's New in Anticoagulation?**
Speaker: Nancy Shapiro, PharmD, FCCP, BCPS
- **Overview of New Medications for Multiple Sclerosis**
Speaker: Crystal Obering, PharmD, MBA, BCPS
- **Neuromuscular Blockers - What to Use in the Face of a Drug Shortage**
Speaker: Jeremy P. Hampton, PharmD, BCPS
- **An Update on EGFR Inhibitors**
Speaker: Leigh Boehmer, PharmD, BCOP
- **New Developments in Gout**
Speaker: Tatum N. Mead, PharmD

Break:
10:00 AM - 10:30 AM

Upon completion of this program, participants should be able to:

1. Describe the pharmacology and pharmacokinetics of dabigatran.
2. Review clinical studies and indications for dabigatran.
3. Review the generic approval data for enoxaparin.
4. Describe other anticoagulation therapies in the pipeline.
5. Describe the etiology of multiple sclerosis.
6. Recognize new treatment options for multiple sclerosis.
7. Identify the most commonly used neuromuscular blocking agents (NMBAs) for rapid sequence intubation (RSI).
8. Compare the pharmacokinetic profiles and therapeutic uses of succinylcholine and rocuronium.
9. Determine strategies for obtaining optimal paralyzing conditions using rocuronium.
10. Summarize the pharmacology of EGFRs.
11. Explain the current role of EGFR's in the treatment of cancers.
12. Describe a management strategy for patients taking EGFR's.
13. Review the etiology and pathophysiology of gout.
14. List current treatment options for gout prophylaxis and treatment.
15. Discuss new treatment options for gout.

Schedule of Events

REGISTRATION, MEETINGS AND CE SESSIONS WILL BE HELD IN THE ST. CHARLES CONVENTION CENTER

Saturday, April 16 - continued

11:30 AM - 1:00 PM LUNCH AND AWARDS

Location: Grand Ballroom CD

1:00 PM - 3:00 PM GENERAL SESSION

Location: Grand Ballroom A

Pharmacy Practice Model Initiative - The Results are in!

Speakers: Kevin J. Colgan, BS Pharm, MA Health Services Administration Mary Ann Kliethermes, BS, PharmD, and Scott Micek, PharmD, BCPS

ACPE Universal Activity Number: 121-000-11-016-L04-P, 121-000-11-016-L04-T

1.5 contact hours Type of Activity: Knowledge-based

Upon completion of this program, participants should be able to:

1. Describe the optimal pharmacy practice model envisioned by the PPMI Summit for hospitals and health systems and how it must integrate with health care beyond its own walls.
2. Describe the change in role of the pharmacist in the PPMI model and the scope of patient care services that should consistently be provided.
3. Describe the change in role of the pharmacy technician in the PPMI model and the base requirements necessary to work in this role.
4. Identify existing and future technologies, tools and resources needed to implement the PPMI model in hospitals and health systems.
5. Identify specific actions as well as process to garner understanding and support from the pharmacy department, other health care providers and health care administrators to implement the PPMI model.

Innovative Practice: Specialty Depth at Saint Luke's Hospital

Speaker: Amber Lucas, PharmD, BCPS, FASHP

ACPE Universal Activity Number: 121-000-11-017-L04-P

0.50 contact hour Type of Activity: Knowledge-based

Upon completion of this program, participants should be able to:

1. Recognize how optimal patient care can occur when pharmacists are the health-team leaders in all aspects of medication therapy.
2. Describe how practice site depth, staff scheduling and work-life balance are interdependent.

Break:

3:00 - 3:30

Schedule of Events

REGISTRATION, MEETINGS AND CE SESSIONS WILL BE HELD IN THE ST. CHARLES CONVENTION CENTER

3:30 PM - 4:30 PM Breakout Sessions - 2 Tracks To Choose From

3:30 PM - 4:30 PM TRACK 1 - ILLINOIS LAW



ICHP Legislative Initiative 2011: Lobbying at the Local Level

Location: Grand Ballroom A

Speaker: Jered Bauer, PharmD

ACPE Universal Activity Number: 121-000-11-018-L03-P, 121-000-11-018-L03-T

1 contact hour Type of Activity: Knowledge-based

Upon completion of this program, participants should be able to:

1. Describe newly introduced pharmacy or health care related legislation.
2. Discuss the potential impact on patient care and pharmacy practice if this legislation is passed into law.
3. Explain the value to pharmacy practice of a good relationship with your State legislators.
4. List ways in which a pharmacist, pharmacy student or pharmacy technician can clearly articulate their important messages to their legislators and State agency personnel.

3:30 PM - 4:30 PM TRACK 2 - MISSOURI LAW



The New and Proposed Changes to the Hospital Pharmacy Rules

Location: Grand Ballroom B

Speaker: Daniel Good, MS, RPh, Bert McClary, RPh, and Greg Teale, PharmD

ACPE Universal Activity Number: 121-000-11-019-L03-P, 121-000-11-019-L03-T

1 contact hour Type of Activity: Knowledge-based

Upon completion of this program, participants should be able to:

1. Describe the process for Hospital Pharmacy Rule review and update through the Missouri Department of Health.
2. Identify the new sections recommended for addition to the Hospital Pharmacy Rules.
3. Discuss how the changes in rules will affect your practice in your hospital setting.
4. Explain how an individual pharmacist can have input on process of rule changes.



Registration Form

2011 ICHP/MSHP Spring Meeting

Thursday, April 14 - Saturday, April 16, 2011

St. Charles Convention Center • St. Charles, MO



Please print clearly or type

Name _____

Home Address _____

City, State, Zip _____

Home Phone _____ E-Mail _____

Business or School Name _____

Business Address _____ City, State, Zip _____

Business Phone _____ Business Fax _____

Badge Name _____ Job Title _____

Full Registration Fees

Full Registration includes education sessions, breakfasts, lunches, and Friday's exhibit showcases.

Register before 3/25/2011 for Early Bird Rates!

	ICHP or MSHP Member	ICHP or MSHP Non-Member	Total
Pharmacist or Healthcare Provider			
<input type="checkbox"/> Early Bird Rate (before 3/25/11)	\$225	\$375	_____
<input type="checkbox"/> Regular Rate	\$255	\$405	_____
Pharmacy Technician			
<input type="checkbox"/> Early Bird Rate (before 3/25/11)	\$50	\$90	_____
<input type="checkbox"/> Regular Rate	\$85	\$125	_____
Pharmacy Resident or Student			
<input type="checkbox"/> Early Bird Rate (before 3/25/11)	\$35	\$60	_____
<input type="checkbox"/> Regular Rate	\$50	\$75	_____

Pharmacy Preceptor/Student Joint (Full Registration Only)

Full Meeting Registration includes education sessions, breakfasts, lunches, and Friday's exhibit showcases.

Both preceptor and student must be ICHP or MSHP members. **Register before 3/25/2011 for Early Bird Rates!**

<input type="checkbox"/> Early Bird Rate (before 3/25/11)	\$130
<input type="checkbox"/> Regular Rate	\$170

Student Name _____

College _____

E-Mail _____

Student needs vegetarian meal(s) for
 Friday Saturday

One-Day Registration Fees

One-Day Registration includes that day's education sessions, breakfast, lunch, and Friday's exhibit showcases.

Select your day: Friday, April 15 Saturday, April 16

	ICHP or MSHP Member	ICHP or MSHP Non-Member	Total
Pharmacist or Healthcare Provider			
<input type="checkbox"/> Regular Rate	\$130	\$185	_____
Pharmacy Technician			
<input type="checkbox"/> Regular Rate	\$25	\$65	_____
Pharmacy Resident or Student			
<input type="checkbox"/> Regular Rate	\$25	\$45	_____



I need vegetarian meal(s) for
 Friday Saturday

Method of Payment

My grand total is \$_____. You will receive a receipt when you pick up your registration materials at the meeting.

Enclosed is a check or money order made payable to: ICHP Please charge my credit card: Visa, MasterCard, Discover, or American Express

Account#: _____

Expiration Date: _____ CVV2 Security Code #: _____

Cardholder Name: _____

Cardholder Signature _____

Cancellation Policy: Cancellations will be accepted in writing prior to April 4, 2011. No cancellations will be accepted after that time. A \$25 processing fee will be applied to all cancellations. Refund checks will be issued after May 1, 2011. **Note:** Payments made to ICHP or MSHP are not deductible charitable contributions for federal income tax purposes. However, they may be deductible under other provisions of the Internal Revenue Code. ICHP Federal Tax ID: #36-2887899. MSHP Federal Tax ID: #43-1243991. **Image Release Notice:** By registering for the ICHP/MSHP 2011 Spring Meeting, you are giving ICHP and MSHP permission to use photographs taken at the Spring Meeting of yourself in ICHP and MSHP publication materials and on the ICHP or MSHP website.

EMBASSY SUITES HOTEL
CONNECTOR ENTRANCE

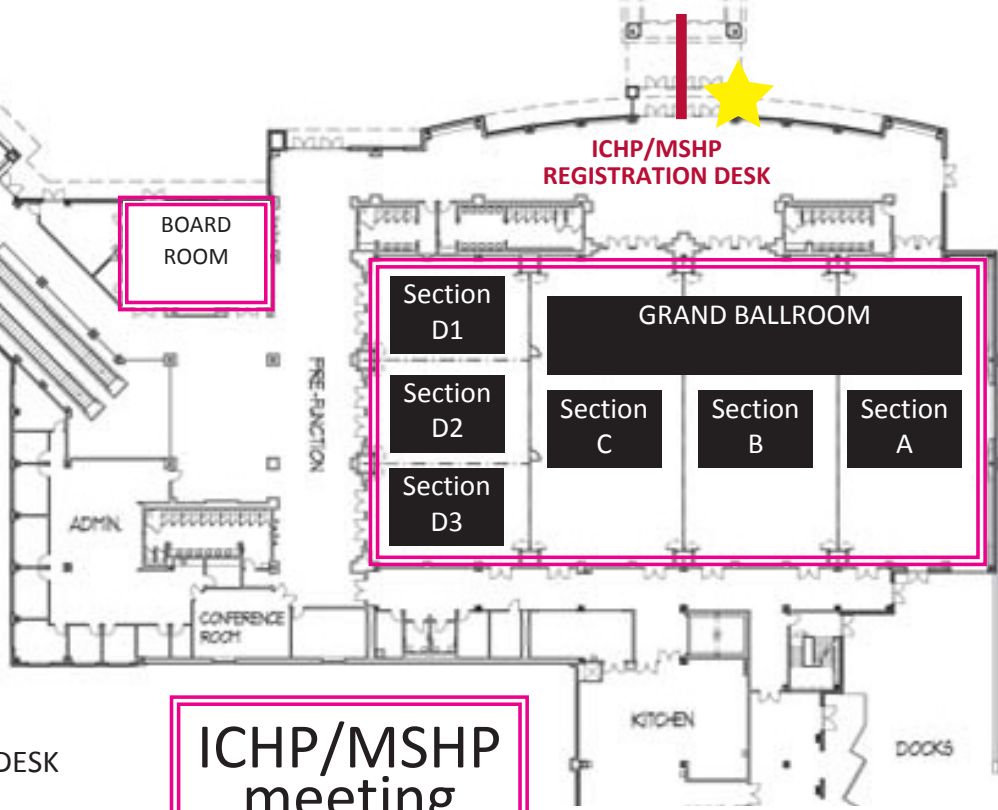
PARKING LOT MAIN ENTRANCE
of St. Charles Convention Center

ST. CHARLES
CONVENTION
CENTER

UPPER
LEVEL



ICHP/MSHP
REGISTRATION DESK



ICHP/MSHP
meeting
rooms

EMBASSY SUITES HOTEL
CONNECTOR

ST. CHARLES
CONVENTION
CENTER

LOWER
LEVEL

