

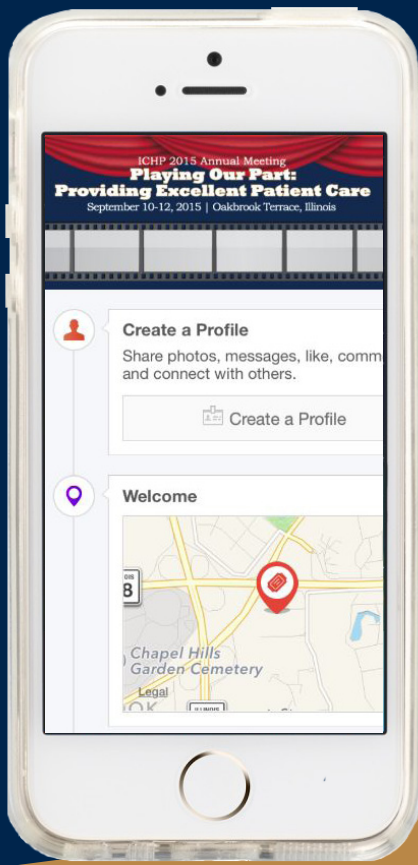
**Illinois Council of Health-System Pharmacists
2015 Annual Meeting**



**Playing Our Part:
Providing Excellent Patient Care**

September 10-12, 2015 • Oakbrook Terrace, Illinois

Syllabus



ICHP 2015 Annual Meeting Mobile App



Get the most out of ICHP's Annual Meeting with your smartphone. Users can create their own custom schedule, view handouts, browse exhibits, receive timely announcements, share photos, connect with speakers, exhibitors and other attendees, and much more. Available NOW in app stores for Android™ and iPhone®.

Download Now
For the most up-to-date Annual Meeting content!



For iPhone®



For Android™



Be social with us!



facebook.com/ichpnet



twitter.com/ichpnet



youtube.com/user/ichpnet

Contents

Acknowledgements	3
Meeting-At-A-Glance	4
Conference Center Map	5
General Meeting Information	6
Accreditation Information	7
Thursday	9
Thursday Keynote	10
Friday	15
Friday Keynote	16
Saturday	20
Saturday Keynote	22
CPE Credit Instructions	24
Faculty and Disclosures Listing	26
Residency Showcase	29
Exhibitor Listing	30
Upcoming Events	31
Meeting Sponsors	32

2015 Annual Meeting Planning Committee

Travis Hunerdosse, <i>Chairman</i>	Scott Meyers Ed Rainville	Joshua Hartman Mark Kliethermes
Maggie DiMarco Allen Lara Ellinger	Katelyn Vautrin Trish Wegner	Emily Lin John McBride
Clara Gary Abby Kahaleh	Technology Committee David Tjhio, <i>Chairman</i>	Mike McEvoy Bryan Shaw
Mary Ann Kliethermes Oksana Kucher	Larry DiGioia	
Bernice Man	Heather Harper	

2015 Annual Meeting Volunteers

Ana Fernandez Linda Fred Charlene Hope	Desi Kotis Jennifer Phillips Jennifer Tryon	Carrie Vogler Tom Westerkamp
--	---	---------------------------------

ICHP Officers and Board of Directors

Linda Fred, President
Mike Fotis, Immediate Past President
Jennifer Phillips, President-Elect
Ginger Ertel, Treasurer
Charlene Hope, Secretary
Travis Hunerdosse, Director, Educational Affairs
Carrie Vogler, Director, Marketing Affairs
Desi Kotis, Director, Professional Affairs
Kathy Komperda, Director, Organizational Affairs
Kathryn Schutlz, Director, Government Affairs
Mike Weaver, Chairman, House of Delegates
Ana Fernandez, Technician Representative
David Tjhio, Chairman, Committee on Technology
Brandi Strader, Chairman, New Practitioners Network
Jacob Gettig, Editor & Chairman, *KeePosted* Committee
Jennifer Phillips, Assistant Editor, *KeePosted*
Scott Meyers, Executive Vice President

ICHP Affiliate Presidents

Gary Peksa, Northern Illinois Society
Julia Schimmelpfennig, Metro East Society
Megan Metzke, Sangamiss Society
Ed Rainville, West Central Society
Vacant - President, Rock Valley Society; Southern IL Society, Sugar Creek Society

ICHP Student Chapter Presidents

Brittany Huff, Chicago State University College of Pharmacy
Jessica Peng, Midwestern University Chicago College of Pharmacy
Jordan Faison, Roosevelt University College of Pharmacy
Valentin Pacuraru, Rosalind Franklin University College of Pharmacy
Whitney Maher, Southern Illinois University Edwardsville School of Pharmacy
Katherine Sencion, University of Illinois College of Pharmacy
Joanne Cha, University of Illinois College of Pharmacy - Rockford

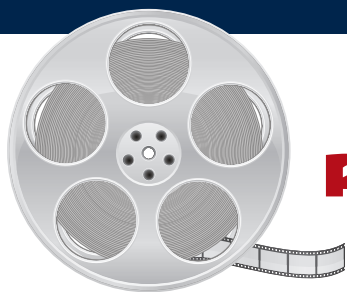
ICHP Regional Directors

Noelle Chapman, North
Jennifer Arnoldi, Central
Lynn Fromm, Co-Director South
Tara Vickery Gorden, Co-Director South

ICHP Office Staff

Scott Meyers , Executive Vice President Trish Wegner , Vice President of Professional Services Maggie DiMarco Allen , Director of Operations and Continuing Education Administrator	Heidi Sunday , Information Systems Manager Amanda Wolff , Communications Manager Jan Mark , Accountant	Jo Haley , Customer Service Representative and Pharmacy Tech Topics™ Specialist Jim Owen , Legislative Consultant
--	---	--

Meeting-At-A-Glance



Playing Our Part: Providing Excellent Patient Care

September 10 - 12, 2015
Oakbrook Terrace, Illinois

Thursday, September 10, 2015

Time	Session/Event	Room
9:30am - 6:15pm	ICHP Registration Desk Hours	Foyer
9:30am - 10:00am	Continental Breakfast	Foyer
10:00am - 12:00pm	General Session	Venetian & Terrace Rooms
12:00pm - 1:00pm	Lunch	Crystal Room
12:00pm - 1:30pm	Past President Lunch (<i>invitation only</i>)	English Room
1:00pm - 3:00pm	Keynote Session	Venetian & Terrace Rooms
3:00pm - 4:30pm	Exhibit Program and Reception	Oak & Brook Rooms
4:30pm - 6:00pm	Track 1 - Management Session	Terrace Room
4:30pm - 6:00pm	Track 2 - Clinical Session	Venetian Room
6:15pm - 8:00pm	House of Delegates	Crystal Room

Friday, September 11, 2015

Time	Session/Event	Room
7:00am - 5:45pm	ICHP Registration Desk Hours	Foyer
7:00am - 8:00am	Continental Breakfast	Foyer
8:00am - 10:00am	General Session	Venetian & Terrace Rooms
8:00am - 10:00am	Reverse Exhibit (<i>invitation only</i>)	Crystal Room
10:00am - 12:00pm	Exhibit Program and Reception	Oak & Brook Rooms
12:00pm - 1:00pm	Lunch & Town Hall Meeting	Venetian & Terrace Rooms
1:00pm - 2:30pm	Keynote Session	Venetian & Terrace Rooms
2:30pm - 5:30pm	Track 1 - Pharmacy Technology Session	Crystal Room
2:30pm - 5:30pm	Track 2 - Clinical Session	Venetian & Terrace Rooms
5:30pm - 7:00pm	NPN Mixer	English Room
7:00pm - 9:30pm	President's Reception (<i>invitation only</i>)	Foyer
7:00 pm - 10:00pm	Party at the Pit	Hilton Garden Inn Fire Pit

Saturday, September 12, 2015

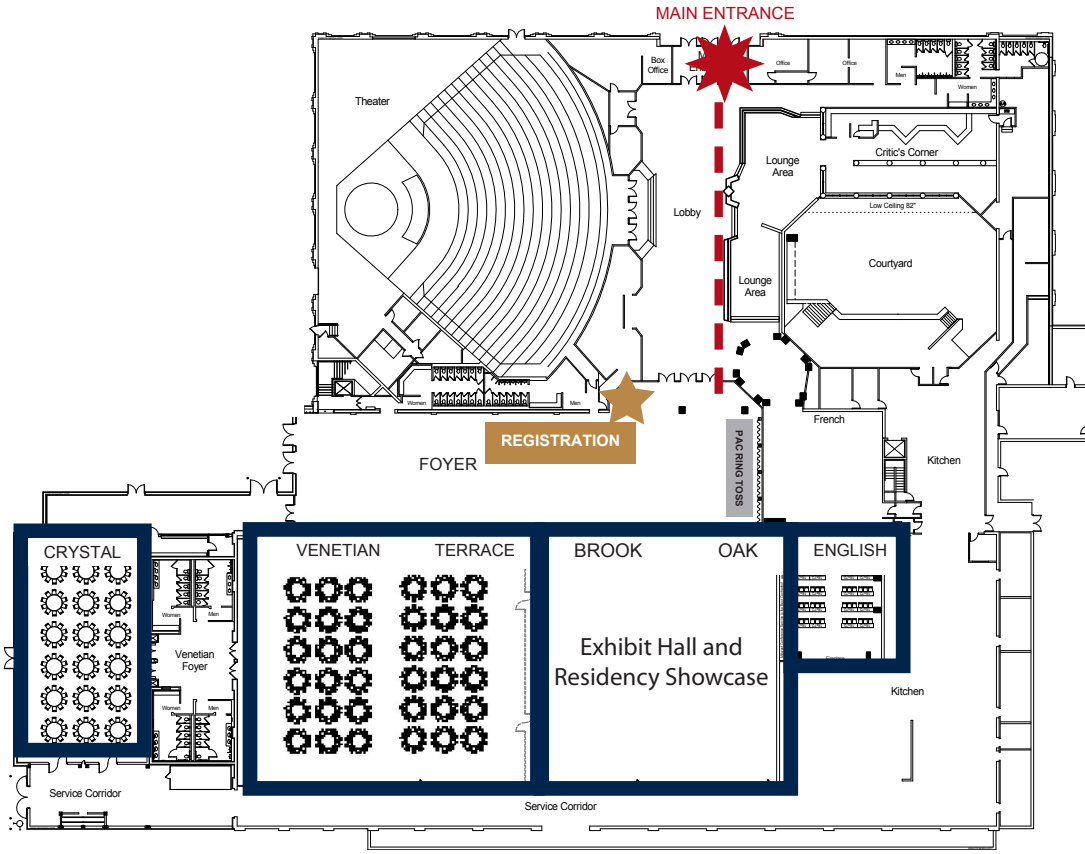
Time	Session/Event	Room
7:30am - 3:15pm	ICHP Registration Desk Hours	Foyer
7:30am - 8:00am	Continental Breakfast	Foyer
8:00am - 11:30am	Track 1 - Technician Session	English Room
8:00am - 11:30am	Track 2 - Pharmacy Practice Session	Crystal Room
8:00am - 11:30am	Track 3 - Student Session	Venetian Room
11:30am - 1:00pm	Lunch & Awards Program	Terrace Room
1:00pm - 3:00pm	Closing Keynote and General Session	Crystal Room
1:00pm - 3:00pm	Residency Showcase	Oak & Brook Rooms

Drury Lane Conference Center Map

★ Main Entrance

★ ICHP Registration Desk

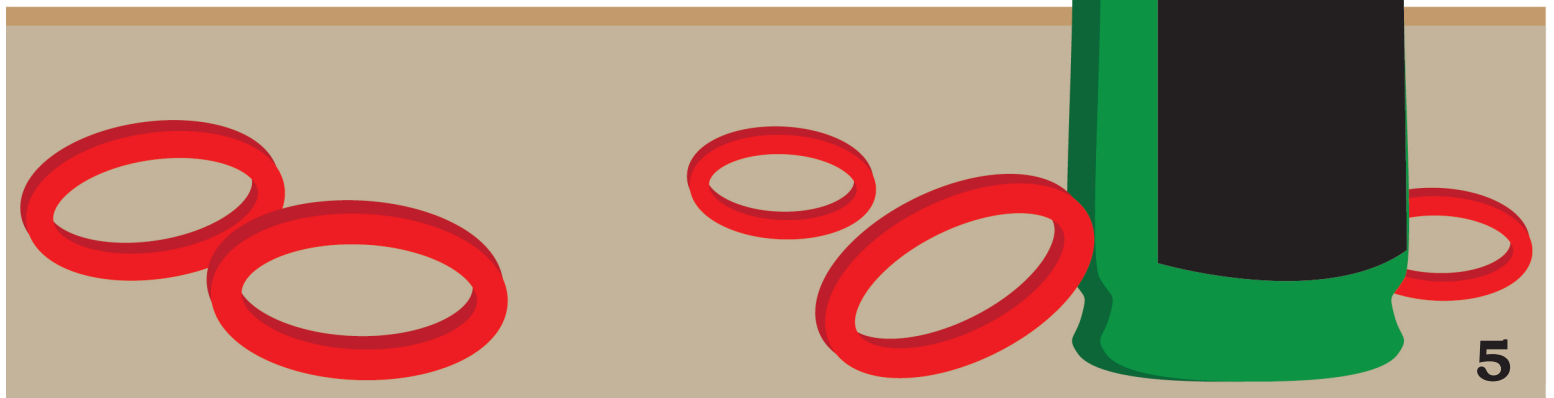
■ Meeting Rooms



PAC Ring Toss

Thursday, September 10 - Saturday, September 12

Stop by the Foyer, donate to the ICHP Pharmacy Action Fund, test your aim, and win prizes!




General Meeting Info

Registration

Meeting materials are available for pick-up during designated hours at the meeting. CPE handouts are available online at www.ichpnet.org/annual. The ICHP registration desk will be located in the conference center foyer. Registration desk hours are:

 **Thursday, September 10**
9:30 AM - 6:15 PM

 **Friday, September 11**
7:00 AM - 5:45 PM

 **Saturday, September 12**
7:30 AM - 3:15 PM

Name Badges

Badges should be worn at all times as a courtesy to other meeting participants. Your badge is your admission pass for all meeting sessions and exhibits, and indicates any dietary restrictions.

Meeting Dress Code

The meeting dress code is business casual. The meeting room temperatures may vary – please remember to bring a sweater or jacket.



Arrangements for Special Assistance

If you have any disability for which you may require an auxiliary aid or special service while attending the meeting, please talk to the ICHP staff at the registration desk.

Target Audience

Health-system pharmacists and pharmacy technicians; pharmacy students.

Continuing Pharmacy Education Credit

Education sessions will be offered for CPE credit and registrants may earn up to 16.5 contact hours (1.65 CEUs) at this meeting (ICHP determines the number of credit hours for each session).

Please note: PTCB now requires CPhTs to earn only pharmacy technician-specific (T-specific) credit to qualify for recertification. However, any Pharmacist or P-specific credit earned by technicians in 2014 will still be accepted for those recertifying in 2015. As of January 1, 2015, ALL CPE credit earned must be T-specific. In addition, PTCB will reduce the number of allowable CPE hours earned through in-service training from 10 to 5.

Programming

Program variations may occur.

Thursday's Lunch

To partake in Thursday's lunch, provided by an educational grant, meeting attendees must attend the preceding live programming.

CPE Monitor

If you plan on obtaining CPE credit, you **must** provide your NABP e-Profile ID# and birthday (MMDD) when registering for the meeting. Your NABP e-Profile ID is required to receive CPE credit. Visit www.mycpemonitor.net for more information about CPE Monitor and how to obtain your NABP e-Profile ID.

Online Program Evaluations and Credit

In order to receive continuing pharmacy education credit, all meeting attendees will need to access CESally.com to complete evaluations and report credits to CPE Monitor. CESally.com is a website designed to meet the educational needs of health-system pharmacists and pharmacy technicians.

You will have 6 weeks after the Annual Meeting to complete your online evaluations and submit your request for continuing education. **Do not delay in completing your evaluations.** If you encounter submission errors, we will need time to assist you before the ACPE deadline. Instructions for completing live program evaluations online are included in the syllabus on page 24. When completing your program evaluation for credit, if a CPE program number ends in both 'P' and 'T', pharmacists must choose the 'P' program and technicians must choose the 'T' program.

Accreditation



The Illinois Council of Health-System Pharmacists is accredited by the Accreditation Council for Pharmacy Education as a provider of continuing pharmacy education. Registrants at the 2015 ICHP Annual Meeting may earn a maximum of 16.5 contact hours of continuing pharmacy education in states that recognize ACPE providers (15.5 contact hours from ICHP).



The “Maximizing the Role of GLP-1 Agonists in Our Patients with Type 2 Diabetes” CE activity is provided by ASHP Advantage. (1 contact hour from ASHP.) The American Society of Health-System Pharmacists (ASHP) is accredited by the Accreditation Council for Pharmacy Education (ACPE) as a provider of continuing pharmacy education. CPE instructions will be provided to on-site attendees. For full information, please go to: http://www.ichpnet.org/calendar/annual_meetings/2015/GLP-1_Agonists.pdf

ACPE Universal Activity Numbers

0121-0000-15-060-L01-P	0121-0000-15-067-L04-P	0121-0000-15-075-L05-P
0121-0000-15-060-L01-T	0121-0000-15-067-L04-T	0121-0000-15-075-L05-T
0121-0000-15-061-L05-P	0121-0000-15-068-L05-P	0121-0000-15-076-L05-P
0121-0000-15-061-L05-T	0121-0000-15-068-L05-T	0121-0000-15-076-L05-T
0121-0000-15-062-L04-P	0121-0000-15-069-L04-P	0121-0000-15-077-L04-P
0121-0000-15-062-L04-T	0121-0000-15-069-L04-T	0121-0000-15-078-L04-P
0121-0000-15-063-L04-P	0121-0000-15-070-L05-P	0121-0000-15-078-L04-T
0121-0000-15-063-L04-T	0121-0000-15-070-L05-T	0121-0000-15-079-L01-P
0121-0000-15-064-L04-P	0121-0000-15-071-L01-P	0121-0000-15-080-L03-P
0121-0000-15-064-L04-T	0121-0000-15-072-L01-P	0121-0000-15-080-L03-T
0121-0000-15-065-L01-P	0121-0000-15-072-L01-T	0121-0000-15-081-L04-P
0121-0000-15-065-L01-T	0121-0000-15-073-L01-P	0121-0000-15-081-L04-T
0121-0000-15-066-L04-P	0121-0000-15-073-L01-T	0204-0000-15-428-L01-P
0121-0000-15-066-L04-T	0121-0000-15-074-L03-T	

2015 ANNUAL MEETING GENERAL LEARNING OBJECTIVES

1. Describe how to foster a collaborative culture for better patient outcomes.
2. Review various published research articles impacting patient care.
3. Address current issues in clinical practice.
4. Outline the standards for USP Chapter 800.
5. Explain the current stance on Provider Status.
6. Compare various Clinical Decision Support systems.
7. Define the scope of practice for pharmacy technicians.
8. Identify steps for submitting and reviewing pharmacy literature and research.



Active Champions
Earn \$35 ICHP Bucks!

Find out how - Email TrishW@ichpnet.org

ICHP thanks



novo nordisk

for their generous
Platinum Sponsorship
of the ICHP 2015
Annual Meeting.

Thursday, September 10

Thursday At-A-Glance

9:30am - 6:15pm

ICHP Registration Desk Hours
Foyer

9:30am - 10:00am

Continental Breakfast
Foyer

10:00am - 12:00pm

General Session
Venetian & Terrace Rooms

12:00pm - 1:00pm

Lunch
Crystal Room

12:00pm - 1:30pm

Past Presidents' Lunch
(invitation only)
English Room

1:00pm - 3:00pm

Keynote Session
Venetian & Terrace Rooms

3:00pm - 4:30pm

Exhibit Program & Reception
Oak & Brook Rooms

4:30pm - 6:00pm

Track 1 - Management Session
Terrace Room

4:30pm - 6:00pm

Track 2 - Clinical Session
Venetian Room

6:15pm - 8:00pm

House of Delegates
Crystal Room

9:30am - 10:00am

Foyer

Continental Breakfast

General Session

10:00am - 11:00am

Venetian & Terrace Rooms

**Invasive Fungal Infections:
What To Do If There's A
Fungus Among Us**

At the end of this presentation, **pharmacist** participants should be able to:

1. List three important interactions and monitoring parameters for a given antifungal agent.
2. Identify two scenarios where empiric antifungal therapy is warranted.
3. Identify drug(s) of choice of at least one invasive fungal infection.

At the end of this presentation, **technician** participants should be able to:

1. Describe the importance of utilizing an antifungal stewardship program.
2. State the most commonly used antifungal agents in the hospital setting.
3. When given a specific pathogen, list the most common antifungal agent(s) used to treat the infection.

Type of Activity: Knowledge-based
1.0 credit hour (0.1 CEU)

UANs: 0121-0000-15-060-L01-P
0121-0000-15-060-L01-T

Nick O'Donnell, PharmD

11:00am - 12:00pm

Venetian & Terrace Rooms

**Thinking Like an Engineer:
Utilizing Human Factor
Methodologies to Improve
IV Medication Safety in the
Peri-operative Setting**

At the end of this presentation, **pharmacist** participants should be able to:

1. Describe the medication use process during the administra-

tion of anesthesia.

2. Identify the differences between the system vulnerabilities for preparing medications from a manufacturer's drug vial vs. a pharmacy prepared prefilled syringe.
3. Discuss the severity of the system vulnerabilities for preparing medications from a manufacturer's drug vial vs. a pharmacy prepared prefilled syringe.
4. Explain strategies to improve medication safety during the course of administering an anesthetic for surgery.
5. State the basic elements involved when considering prefilled syringe adoption in the O.R.

At the end of this presentation, **technician** participants should be able to:

1. Describe the medication use process during the administration of anesthesia.
2. Identify the differences between the system vulnerabilities for preparing medications from a manufacturer's drug vial vs. a pharmacy prepared prefilled syringe.
3. Discuss the severity of the system vulnerabilities for preparing medications from a manufacturer's drug vial vs. a pharmacy prepared prefilled syringe.
4. Explain strategies to improve medication safety during the course of administering an anesthetic for surgery.
5. State the basic elements involved when considering prefilled syringe adoption in the O.R.

Type of Activity: Knowledge-based
1.0 credit hour (0.1 CEU)

UANs: 0121-0000-15-061-L05-P
0121-0000-15-061-L05-T

**Christopher Fortier, PharmD,
FASHP**

An educational grant for this program provided by PharMEDium.

12:00pm - 1:00pm

Crystal Room

Lunch

Thursday, September 10



Janet A. Silvester, PharmD, MBA, FASHP received her B.S. in Pharmacy from the Medical College of Virginia, Virginia Commonwealth University, a Doctor of Pharmacy from Creighton University and a Masters in Business Administration from James Madison University.

In 2013, Janet joined the American Society of Health-System Pharmacists (ASHP) as Vice President of Accreditation Services where she is responsible for providing strategic direction for all ASHP accreditation programs and services domestically and internationally. Previously, Janet spent 34 years in hospital pharmacy practice and was the Director of Pharmacy and Emergency Services at Martha Jefferson Hospital in Charlottesville, Va.

Janet is a past president of the American Society of Health-System Pharmacists, and past president of the Virginia Society of Health-System Pharmacists. She is a past recipient of the Virginia Health-System Pharmacist of the Year award, the RD Anderson Distinguished Leadership Award, and the 2012 ASHP Award for Distinguished Leadership in Health-System Pharmacy Practice.

12:00pm - 1:30pm

English Room

Past Presidents' Lunch (invitation only)

Keynote Session

1:00pm - 1:30pm

Venetian & Terrace Rooms

Best Practice Award Presentation

1:30pm - 3:00pm

Hot Topics: Provider Status, Workforce and Accreditation Update

At the end of this presentation, **pharmacist** participants should be able to:

1. Explain provider status and steps required for grassroots activities to impact legislation.
2. Describe the results of the 2014 National Pharmacy Workforce Study and the priorities of the Pharmacy Workforce Center.
3. Address issues related to accreditation of both pharmacy residency programs and the new collaboration between ASHP and ACPE for accredited technician education and training programs.
4. Review new resources available for implementation of the new PGY1 residency standards
5. Discuss the alignment of the PTCB 2020 policies with ASHP policies and the goals of the ASHP/ACPE collaboration on technician education and training.

At the end of this presentation, **technician** participants should be able to:

1. Describe what provider status is.
2. Describe the results of the 2014 National Pharmacy Workforce Study and the priorities of the Pharmacy Workforce Center.
3. Address issues related to accreditation of both pharmacy residency programs and the new collaboration between ASHP and ACPE for accredited technician education and training programs.

4. Discuss the alignment of the PTCB 2020 policies with ASHP policies and the goals of the ASHP/ACPE collaboration on technician education and training.
5. Review key requirements in the technician program standards.

Type of Activity: Knowledge-based
1.5 credit hours (0.15 CEUs)

UANs: 0121-0000-15-062-L04-P
0121-0000-15-062-L04-T

Janet A. Silvester, PharmD, MBA, FASHP

3:00pm - 4:30pm

Oak & Brook Rooms

Exhibit Program & Reception

Track 1 Management Session

4:30pm - 5:30pm

Terrace Room

Lost in Translation – Improving Med Rec Through Collaboration

At the end of this presentation, **pharmacist** participants should be able to:

1. Describe key metrics to evaluate the effectiveness of a Discharge Medication Review program.
2. Identify opportunities to optimize the Electronic Health Record to improve efficiency of a Pharmacist Discharge Medication Review program.
3. Explain the “life-cycle” of an order and how other facilities and/or encounters are impacted by transitions of care into or out of an acute care setting.

At the end of this presentation, **technician** participants should be able to:

1. Define the difference between performing discharge medication reconciliation and discharge medication review.
2. Recognize common defects when a patient experiences a transition of care.
3. Explain the “life-cycle” of an or-

Thursday, September 10

der and how other facilities and/or encounters are impacted by transitions of care into or out of an acute care setting.

Type of Activity: Knowledge-based
1.0 credit hour (0.1 CEU)

UANs: 0121-0000-15-063-L04-P
0121-0000-15-063-L04-T

Heather M. Harper, PharmD, BCPS;
Karin L. Terry, PharmD

5:30pm - 6:00pm

Terrace Room

Isn't All of Pharmacy "Special"? Developing Specialty Pharmacy Services

At the end of this presentation, **pharmacist** participants should be able to:

1. Explain the unique benefits of an integrated health-system specialty pharmacy program.
2. Identify operational and clinical metrics of a specialty pharmacy program.

At the end of this presentation, **technician** participants should be able to:

1. Describe how certified pharmacy technicians play a role in delivering specialty pharmacy services.
2. Describe roles associated with the specialty pharmacy back office.

Type of Activity: Knowledge-based
0.5 credit hour (0.05 CEU)

UANs: 0121-0000-15-064-L04-P
0121-0000-15-064-L04-T

Lana Gerzenshtein, PharmD, BCPS
AQ-ID

Track 2 Clinical Session

4:30pm - 5:30pm

Venetian Room

Maximizing the Role of GLP-1 Agonists in Our Patients with Type 2 Diabetes

At the end of this presentation, **pharmacist** participants should be able to:

1. Review the effect of GLP-1 on glucose metabolism.
2. Compare pathophysiologic mechanisms of GLP-1 agonists to other diabetes medications.
3. Discuss the differentiating characteristics of available GLP-1 agonists including long-term safety.
4. Explain the importance of proper injection device technique in the preparation and administration of GLP-1 agonists in the management of type 2 diabetes.
5. Strategize how to overcome barriers in GLP-1 agonist use.

Type of Activity: Application-based
1.0 credit hour (0.1 CEU)

UAN: 0204-0000-15-428-L01-P

Curtis L. Triplett, PharmD, CDE

Program coordinated by ASHP Advantage.

For more information please go to:
http://www.ichpnet.org/calendar/annual_meetings/2015/GLP-1_Agonists.pdf

5:30pm - 6:00pm

Venetian Room

Important Tips in the Management of Epilepsy

At the end of this presentation, **pharmacist** participants should be able to:

1. List treatment pearls for common issues related to the management of epilepsy in the hospital setting.
2. Describe alternative treatment options for epilepsy due to medication shortage issues in the hospital setting.

At the end of this presentation, **technician** participants should be able to:

1. Recognize the impact of drug shortages on the management of epilepsy in the hospital setting.
2. List the available dosage form(s) of the anti-epileptic medications discussed during this presentation.

Type of Activity: Knowledge-based
0.5 credit hour (0.05 CEU)

UANs: 0121-0000-15-065-L01-P
0121-0000-15-065-L01-T

Deepika Pereira, PharmD, BCPS

6:15pm - 8:00pm

Crystal Room

House of Delegates

ICHP thanks



for their generous
Platinum Sponsorship
of the ICHP 2015
Annual Meeting.

ICHP PHARMACY ACTION FUND CONTRIBUTORS

ADVOCACY ALLIANCE - \$2,500 - \$10,000

Kevin Colgan
Edward Donnelly

Dave Hicks
Frank Kokaisl

Scott Meyers
Michael Novario

Thomas Westerkamp

LINCOLN LEAGUE - \$1,000 - \$2,499

Scott Bergman
Andrew Donnelly
Ginger Ertel
Linda Fred
James Owen Consulting, Inc.

Ann Jankiewicz
Jan Keresztes
Kathy Komperda
Despina Kotis
William McEvoy

Miriam Mobley-Smith
Christina Quillian
Michael Rajski
Edward Rickert
Michael Short

Carrie Sincak
Avery Spunt
Michael Weaver
Patricia Wegner

CAPITOL CLUB - \$500 - \$999

Sheila Allen
Maggie DiMarco Allen
Rauf Dalal

Drury Lane Theatre
Leonard Kosiba
George MacKinnon

Janette Mark
Jennifer Phillips
Edward Rainville

JoAnn Stubbings
Jill Warszalek

GENERAL ASSEMBLY GUILD - \$250 - \$499

Tom Allen
Peggy Bickham
Jaime Borkowski
Brad Dunck

Sandra Durley
Nancy Fjortoft
Michael Fotis
Joann Haley
Travis Hunerdosse

Zahra Khudeira
Ann Kuchta
Mary Lee
Gloria Meredith
Justin Schneider

Kathryn Schultz
Kristi Stice
Heidi Sunday
Alan Weinstein

SPRINGFIELD SOCIETY - \$100 - \$249

Jen Arnoldi
Jerry Bauman
Jill Borchert
Donna Clay
Mark Deaton
Gireesh Gupchup
Joan Hardman

Glenna Hargreaves
Charlene Hope
Robert Hoy
Diana Isaacs
Kim Janicek
Stan Kent
Kati Kwasiborski
Kristopher Leja

George Lyons
Ronald Miller
New Practitioners Network
Karen Nordstrom
Peggy Reed
Katie Ronald
Brandi Strader
Jennifer Tryon

Tara Vickery Gorden
Carrie Vogler
Marie Williams
Amanda Wolff
Cindy Wuller
William Wuller

GRASSROOTS GANG - \$50 - \$99

Brett Barker
Gunchoo Chadha
Jeanne Durley
Mary Eilers
Lara Ellinger

Clara Gary
Carol Heunisch
Brian Hoff
Kim Lim
Mark Luer
Bella Maningat

Milena McLaughlin
Megan Metzke
Katherine Miller
Robert Miller
Julio Rebolledo
Mark Ruscin

Stacy Schmittling
Lucas Stoller
Dave Willman
Janeen Winneke

CONTRIBUTOR - \$1 - \$49

Renee Advincula
Yinka Alaka
Anchalee Ardtharn
Lisa Ball
Roger Ball
Marcy Batsakis
Greg Biedron
Amy Bobbit
Kathy Cimaskasky
Mardhia Dayisi
Andreea Ducu

Veronica Flores
Janice Frueh
Crystin Gloude
Linda Grider
Alisa Groesch
Rebekah Hanson
Margaret Heger
Ina Henderson
Julie Kasap
Dijana Keljalic
Nehrin Khamo
Josephine Kochou

Huda-Marie Kuttub
Chris Little
Kristopher Lozanovski
Dylan Marx
Laura Mazzone
Kit Moy
Syed Munawer
Whitney Palacek
Hina Patel
Abby Reeder
Cheryl Scantlen
Hannah Sheley

Chris Shoemaker
Carrie Silverman
Theophilus Simon
Jennifer Splawski
Gloria Sporleder
David Tjhio
Michael Wilcox
Christina Yates
Thomas Yu

TO CONTRIBUTE ONLINE NOW OR PRINT A MAIL-IN FORM, go to www.ichpnet.org, on the left hand menu click *Public Policy*, then click *ICHP Pharmacy Action Fund*, then click *Donation Form*, OR scan the QR Code to the right with your smartphone.



ICNET

STAY CONNECTED

Clinical Surveillance Software Designed to Help You

- Monitor all antibiotics used in your facility or group of facilities
- Analyze data captured on clinical interventions and manage alerts
- Compare costs of different therapies
- Monitor the impact of your antimicrobial stewardship efforts



Visit us at www.baxtericnet.com

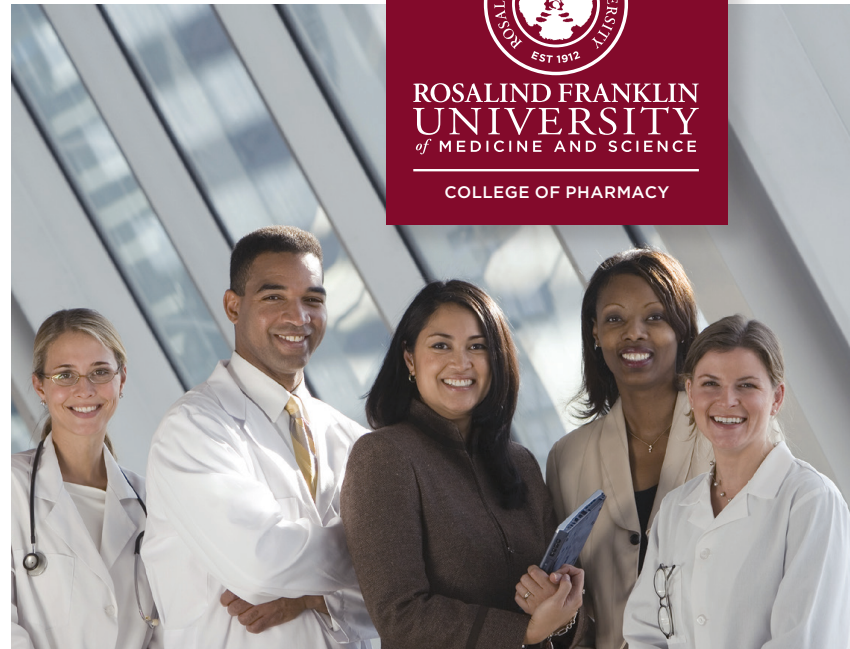
Baxter, ICNet, and the ICNet Logo are trademarks of Baxter International Inc., or its subsidiaries.
USMP/MG128/15-0010 8/15

Baxter

BRINGING FUTURES TOGETHER.

For over 100 years, Rosalind Franklin University has offered students exceptional clinical education, research opportunities and exposure to emerging technologies. From day one, students collaborate in teams, learning from, with, and about one another's profession, and how, together, they each impact the future of healthcare.

Learn more at www.rosalindfranklin.edu/cop



LIFE *in* DISCOVERY

COLLEGE OF PHARMACY

rosalindfranklin.edu

More than 30 advanced medical and science degrees in metropolitan Chicago and online.

Friday, September 11

Friday At-A-Glance

7:00am - 5:45pm

ICHP Registration Desk Hours
Foyer

7:00am - 8:00am

Continental Breakfast
Foyer

8:00am - 10:00am

General Session
Venetian & Terrace Rooms

8:00am - 10:00am

Reverse Exhibit
(invitation only)
Crystal Room

10:00am - 12:00pm

Exhibit Program & Reception
Oak & Brook Rooms

12:00pm - 1:00pm

Lunch & Town Hall Meeting
Venetian & Terrace Rooms

1:00pm - 2:30pm

Keynote Session
Venetian & Terrace Rooms

2:30pm - 5:30pm

Track 1 - Pharmacy Technology
Session
Crystal Room

2:30pm - 5:30pm

Track 2 - Clinical Session
Venetian & Terrace Rooms

5:30 pm - 7:00pm

NPN Mixer
English Room

7:00 pm - 9:30pm

President's Reception
(invitation only)
Foyer

7:00pm - 10:00pm

Party at the Pit
Hilton Garden Inn Fire Pit

7:00am - 8:00am

Foyer

Continental Breakfast

General Session

8:00am - 10:00am

Venetian & Terrace Rooms

**Establishing a Patient Care
Ritual: Pharmacist Patient
Care Process**

At the end of this presentation,
pharmacist participants should be
able to:

1. Describe how a standardized patient care process has been defined by national pharmacy organizations.
2. Explain the rationale for using a standardized patient care process.
3. Devise a care plan using the standardized patient care process.
4. Apply factors to consider, including health information technology, when implementing a standardized patient care process in various practice settings.
5. Identify how to obtain resources and tools for implementing a standardized patient care process.

At the end of this presentation,
technician participants should be
able to:

1. Describe how a standardized patient care process has been defined by national pharmacy organizations.
2. Explain the rationale for using a standardized patient care process.
3. Devise a care plan using the standardized patient care process.
4. Apply factors to consider, including health information technology, when implementing a standardized patient care process in various practice settings.
5. Identify how to obtain resources and tools for implementing a standardized patient care process.

Type of Activity: Application-based
2.0 credit hours (0.2 CEUs)

UANs: 0121-0000-15-066-L04-P
0121-0000-15-066-L04-T

Elizabeth Zdyb, PharmD, MBA, BCPS

8:00am - 10:00am

Crystal Room

Reverse Exhibit (invitation only)

10:00am - 12:00pm

Oak & Brook Rooms

Exhibit Program & Reception

12:00pm - 1:00pm

Venetian & Terrace Rooms

Lunch & Town Hall Meeting

Friday, September 11

Keynote Session

1:00pm - 2:30pm

Venetian & Terrace Rooms

Interprofessional Practice: Start at the Grassroots

At the end of this presentation, **pharmacist** participants should be able to:

1. Describe payer, including CMS, programs that incentivize health care professionals to improve patient outcomes.
2. Discuss effective strategies for incorporating pharmacists as part of health care teams.
3. Describe roles and responsibilities of pharmacists as part of the healthcare team.
4. Explain how pharmacists and pharmacy technicians bring value to the health care team and contribute to meeting patient outcomes as part of team-based care.

At the end of this presentation, **technician** participants should be able to:

1. Describe payer, including CMS, programs that incentivize health care professionals to improve patient outcomes.
2. Discuss effective strategies for incorporating pharmacists as part of health care teams.
3. Describe roles and responsibilities of pharmacists as part of the healthcare team.
4. Explain how pharmacists and pharmacy technicians bring value to the health care team and contribute to meeting patient outcomes as part of team-based care.

Type of Activity: Knowledge-based
1.5 credit hours (0.15 CEUs)

UANs: 0121-0000-15-067-L04-P
0121-0000-15-067-L04-T

Reid B. Blackwelder, MD, FAAFP;
L. Brian Cross, PharmD, CDE,
BCACP



Dr. L. Brian Cross, PharmD, CDE, BCACP is currently an Associate Professor and Vice-Chair in the Department of Pharmacy Practice at the Bill Gatton College of Pharmacy and Clinical Associate Professor in the Department of Family Medicine at the James H. Quillen College of Medicine as part of the Academic Health Sciences Center at East Tennessee State University (ETSU). His primary practice sites are several Patient Centered Medical Homes (PCMH's) within the Mountain States Medical Group, a part of the Mountain States Health Alliance. Prior to that, he was Director of Pharmacotherapy

Services at ETSU Family Physicians of Kingsport. He currently serves as the Residency Program Director for a PGY-2 residency in ambulatory care with a clinical emphasis in Family Medicine as well as a secondary emphasis in academia. He has developed ambulatory practice sites in various clinical areas including the Indian Health System, VA Health System, academic teaching medical practices, specialty practices (endocrine and cardiology), as well as large multi-specialty private practice sites. Dr. Cross received his B.S. in pharmacy from the Health Sciences Center at West Virginia University in 1991 and completed a residency in clinical pharmacy practice at the New England Medical Center in Boston, Massachusetts in 1992. He received his PharmD from the University of Tennessee in 2000, and subsequently completed an advanced-practice residency in primary care at the Regional Medical Center in Memphis in 2001. In 2004, Dr. Cross received the Patrick J. Murphy, M.D. Award for Excellence in Teaching in Family Medicine. In 2005, Dr. Cross was awarded the University of Tennessee National Alumni Association Outstanding Teacher Award as well as being recognized as the teacher of the year by the pharmacy class of 2008. In 2012 and 2013, he was awarded the Attending Teacher of the Year Award by the ETSU Department of Family Medicine. In 2013, he was awarded the Outstanding Teacher award by the ETSU Bill Gatton College of Pharmacy class of 2015.



Dr. Reid B. Blackwelder, MD, FAAFP a family physician in Kingsport, Tenn., is Chair of the American Academy of Family Physicians. In addition to his duties as AAFP Chair, he serves as director of the Medical Student Education Division for the Department of Family Medicine at East Tennessee State University's James H. Quillen College of Medicine in Johnson City, Tenn., where he is also a professor of family medicine. Blackwelder has dedicated a significant amount of his time to teaching. In fact, his dedication has earned him a plethora of outstanding teaching awards, including several

awards from the Quillen College of Medicine's Caduceus Club, the Humanism in Medicine Award from the New Jersey Health Foundation and the Dean's Teaching Award from ETSU. Additionally, Blackwelder was named Outstanding Family Medicine Attending Physician of the Year numerous times, and he was selected Mentor of the Year in 2001 and 2010 by ETSU medical students. In 2005, 2006 and again in 2009, Blackwelder was featured in the Guide to Top Family Doctors published by the Consumers Research Council of America. Also, in 2010, he received the Patient's Choice Award from Vitals.com, a website that helps patients find a doctor who is right for them. Blackwelder earned his undergraduate degree in biology from Haverford College in Haverford, Pa., and his medical degree from Emory University in Atlanta, graduating cum laude and as a member of Alpha Omega Alpha Medical Honor Society. He then completed his residency at the Medical College of Georgia in Augusta serving as chief resident. Blackwelder is board certified by the American Board of Family Medicine and has the AAFP Degree of Fellow.

Friday, September 11

Track 1 Pharmacy Technology Session

2:30pm - 3:30pm

Crystal Room

Informatics Pearls

- *Battling Alert Fatigue*
- *Automated Kit Replenishment*
- *The Role of the Technician in Informatics*
- *Near-miss Error Reporting*
- *Drug Recall Tracking*

At the end of this presentation, **pharmacist** participants should be able to:

1. Describe an automated system that can be used to track drug recalls.
2. Explain the roles available to pharmacy technicians in the informatics space.
3. Identify a method for reporting near-miss errors.
4. Illustrate an automated workflow for restocking a used pharmacy kit.
5. Describe strategies that can be employed to overcome alert fatigue.

At the end of this presentation, **technician** participants should be able to:

1. Describe an automated system that can be used to track drug recalls.
2. Explain the roles available to pharmacy technicians in the informatics space.
3. Identify a method for reporting near-miss errors.
4. Illustrate an automated workflow for restocking a used pharmacy kit.
5. Describe strategies that can be employed to overcome alert fatigue.

Type of Activity: Knowledge-based
1.0 credit hour (1.0 CEU)

UANs: 0121-0000-15-068-L05-P
0121-0000-15-068-L05-T

Michelle Geurink, RPh;
Joshua Hartman, PharmD, MS
Health Informatics;
Heather D. Horton, PharmD, MS;
Melissa Smith, PharmD;
Jeff Thiel, PharmD, MS

3:30pm - 3:45pm
Break

3:45pm - 4:15pm

Crystal Room

Pathways to Informatics

At the end of this presentation, **pharmacist** participants should be able to:

1. Describe career path options for pharmacists and technicians interested in specializing in informatics.
2. Compare and contrast formal education options for pursuing pharmacy informatics.

At the end of this presentation, **technician** participants should be able to:

1. Describe career path options for pharmacists and technicians interested in specializing in informatics.
2. Compare and contrast formal education options for pursuing pharmacy informatics.

Type of Activity: Knowledge-based
0.5 credit hour (0.05 CEU)

UANs: 0121-0000-15-069-L04-P
0121-0000-15-069-L04-T

Joshua Hartman, PharmD, MS,
Health Informatics

4:15pm - 5:30pm

Crystal Room

Optimizing Care Through Clinical Surveillance

- *Overview*
- *TheraDoc*
- *VigiLanz*
- *MedMined*
- *Epic Antimicrobial Stewardship*

At the end of this presentation, **pharmacist** participants should be able to:

1. Identify the prerequisites necessary for implementing a Clinical Surveillance system.
2. Articulate the benefits of using clinical surveillance tools in the pharmacy workflow.
3. Compare and contrast the features available with different systems in the marketplace.
4. Describe how a clinical surveillance system can improve clinical workflow.

At the end of this presentation, **technician** participants should be able to:

1. Identify the prerequisites necessary for implementing a Clinical Surveillance system.
2. Articulate the benefits of using clinical surveillance tools in the pharmacy workflow.
3. Compare and contrast the features available with different systems in the marketplace.
4. Describe how a clinical surveillance system can improve clinical workflow.

Type of Activity: Knowledge-based
1.25 credit hours (0.125 CEUs)

UANs: 0121-0000-15-070-L05-P
0121-0000-15-070-L05-T

Michelle Geurink, RPh;
Zahra Khudeira, PharmD, MA,
BCPS, CPPS;
Rupal Patel, PharmD;
Bryan Shaw, PharmD;
Melissa Smith, PharmD

Friday, September 11

Track 2 Clinical Session

2:30pm - 4:45pm

Venetian & Terrace Rooms

Top Things to Know About Five Commonly Encountered Diseases

- *Hepatitis C*
- *Heart Failure*
- *COPD/Asthma*
- *Community Acquired Pneumonia*
- *Hypertension in ESKD*

At the end of this presentation, **pharmacist** participants should be able to:

1. Describe critical therapeutic concepts for commonly encountered disease states.
2. Identify clinical information that can be applied to your work setting.
3. List potential future developments for commonly encountered disease states.

Type of Activity: Knowledge-based
2.0 credit hours (0.2 CEUs)

UAN: 0121-0000-15-071-L01-P

John Esterly, PharmD, BCPS AQ-ID;
Ayesha Khan, PharmD;
Michelle T. Martin, PharmD,
BCPS, BCACP;
Christine Schumacher, PharmD,
BCPS, CDE, BC-ADM;
Lori A. Wilken, PharmD, BCACP,
TT-S, AE-C

4:45pm - 5:30pm

Venetian & Terrace Rooms

Managing Bleeding in Patients on Direct Oral Anticoagulants

At the end of this presentation, **pharmacist** participants should be able to:

1. Compare bleeding risk among various patient populations receiving a direct oral anticoagulant.
2. Review management strategies for reversal of the anticoagulant effect of direct oral anticoagulants.
3. Describe drugs in the pipeline

for management of bleeding associated with direct oral anticoagulant use.

At the end of this presentation, **technician** participants should be able to:

1. List the risks for bleeding among patients receiving a direct oral anticoagulant.
2. Review methods to reverse the effects of direct oral anticoagulants.
3. Describe drugs in the pipeline for management of bleeding associated with direct oral anticoagulant use.

Type of Activity: Knowledge-based
0.75 credit hour (0.075 CEU)

UANs: 0121-0000-15-072-L01-P
0121-0000-15-072-L01-T

Edith A. Nutescu, PharmD

5:30pm - 7:00pm

English Room

NPN Mixer

All new practitioners (up to 10 years out from graduation) are welcome to come mingle and enjoy hors d'oeuvres and beverages!

7:00pm - 9:30pm

Foyer

President's Reception (invitation only)

7:00pm - 10:00pm

Hilton Garden Inn Fire Pit

Party at the Pit

Fire pit, that is! Socialize with fellow pharmacy students and new practitioners at the Hilton Garden Inn's outdoor fire pit. Cash bar.

ICHP thanks



for their generous
Silver Sponsorship
of the ICHP 2015
Annual Meeting.

THERADOC[®]
CLINICAL SURVEILLANCE

\$2,471,852
saved
in one year

Udeani G, Evans J, Payne A, Shanks JD. Clinical and Economic Impact of a Data Mining Computer Application at CHRISTUS Spohn; CHRISTUS Spohn Health System; Corpus Christi, Texas. Poster session presented at: *Texas Society of Health-system Pharmacists 2014 Annual Seminar*; 2014 Apr 11-13; Houston, TX.



PREMIER

What does **PreventIV Measures**SM Packaging and Labeling from SAGENT[®] offer you?

**EASY-
TO-READ**
drug names

DISTINCTIVE COLOR
FOR EACH STRENGTH

Full-color cartons

DIFFERENTIATED
Packaging and Labeling

Multiple benefits for your hospital.

For healthcare professionals focused on advancing patient safety in the medication delivery process, SAGENT's **PreventIV Measures** Packaging and Labeling has a lot to offer – and the benefits are easy to see. When drug names and dosage strengths are easy to read; when each presentation features a unique package and label design; when every product in our portfolio features **PreventIV Measures** – only SAGENT provides these comprehensive feature sets that work together to help caregivers reduce the risk of medication errors.

Find out more at www.PreventIVMeasures.com



SAGENT Pharmaceuticals[®]

Sagent Pharmaceuticals, Inc. Schaumburg, Illinois 60195

FEATURING



PreventIV MeasuresSM
Packaging and Labeling

www.SagentPharma.com

The SAGENT logo, SAGENT and SAGENT Pharmaceuticals are registered trademarks of Sagent Pharmaceuticals, Inc. **PreventIV Measures** is a service mark of Sagent Pharmaceuticals, Inc. ©2015 Sagent Pharmaceuticals, Inc. 2029

NPH Mixer

Friday, September 11
5:30 - 7:00pm
English Room

ICHP thanks



for their generous
Silver Sponsorship
of the ICHP 2015
Annual Meeting.

Saturday, September 12

Saturday At-A-Glance

7:30am - 3:15pm

ICHP Registration Desk Hours
Foyer

7:30am - 8:00am

Continental Breakfast
Foyer

8:00am - 11:30am

Track 1 - Technician Session
English Room

8:00am - 11:30am

Track 2 - Pharmacy Practice
Session
Crystal Room

8:00am - 11:30am

Track 3 - Student Session
Venetian Room

11:30am - 1:00pm

Lunch & Awards Program
Terrace Room

1:00pm - 2:00pm

Keynote Session
Crystal Room

2:00pm - 3:00pm

General Session
Crystal Room

1:00pm - 3:00pm

Residency Showcase
Oak & Brook Rooms

7:30am - 8:00am

Foyer

Continental Breakfast

Track 1 Technician Session

8:00am - 9:15am

English Room

Nonprescription Drug Interactions with Prescription Drugs

At the end of this presentation, **pharmacist** participants should be able to:

1. Define non-prescription drugs.
2. Describe the various ways non prescription drugs interact with prescription drugs.
3. Provide typical examples of non-prescription drugs which interact with prescription drugs.
4. Provide typical prescription drugs which interact with non-prescription drugs.
5. Name an example of a nonprescription drug-prescription drug interaction for each way non-prescription drugs interact with prescription drugs.

At the end of this presentation, **technician** participants should be able to:

1. Define non-prescription drugs.
2. Describe the various ways non prescription drugs interact with prescription drugs.
3. Provide typical examples of non-prescription drugs which interact with prescription drugs.
4. Provide typical prescription drugs which interact with non-prescription drugs.
5. Name an example of a nonprescription drug-prescription drug interaction for each way non-prescription drugs interact with prescription drugs.

Type of Activity: Knowledge-based
1.25 credit hours (0.125 CEUs)

UANs: 0121-0000-15-073-L01-P
0121-0000-15-073-L01-T

Nicholas G. Popovich, PhD, RPh

9:30am - 10:30am

English Room

The Scope of Pharmacy Technician Practice

At the end of this presentation, **technician** participants should be able to:

1. Discuss the scope of practice of a pharmacy technician and how this differs from a student pharmacist.
2. Outline the requirements for becoming a certified pharmacy technician in the state of Illinois.
3. Describe the pharmacy practice model initiative (PPMI).
4. Explain how tech-check-tech falls within the law and expands the practice of pharmacy through the PPMI.

Type of Activity: Knowledge-based
1.0 credit hour (0.1 CEU)

UAN: 0121-0000-15-074-L03-T

Sara Vander Ploeg, PharmD

10:30am - 11:00am

English Room

Paralyzing Danger: Safety Strategies for Neuromuscular Blocking Agents

At the end of this presentation, **pharmacist** participants should be able to:

1. List neuromuscular blocking agents (NMBs) that are commonly used in hospitals.
2. Describe at least five error prevention strategies for preventing errors involving NMBs.

At the end of this presentation, **technician** participants should be able to:

1. List neuromuscular blocking agents (NMBs) that are commonly used in hospitals.
2. Describe at least five error prevention strategies for preventing errors involving NMBs.

Type of Activity: Knowledge-based
0.5 credit hour (0.05 CEU)

UANs: 0121-0000-15-075-L05-P
0121-0000-15-075-L05-T

Peggy S. Bickham, PharmD

Saturday, September 12

11:00am - 11:30am

English Room

Keeping Kids Safe: Quality and Safety in the Pediatric Pharmacy

At the end of this presentation, **pharmacist** participants should be able to:

1. Explain quality measures used in the pediatric pharmacy.
2. Discuss safety practices to help reduce medication errors in the pediatric pharmacy.

At the end of this presentation, **technician** participants should be able to:

1. Explain Quality measures used in the Pediatric Pharmacy.
2. Discuss safety practices to help reduce medication errors in the Pediatric Pharmacy.

Type of Activity: Knowledge-based
0.5 credit hour (0.05 CEU)

UAN: 0121-0000-15-076-L05-P
0121-0000-15-076-L05-T

Daniel E. Hickman, CPhT

Track 2 Pharmacy Practice Session

8:00am - 9:15am

Crystal Room

Residency Project Pearls 2015

Evaluation of Opportunities for Pharmacist Integration into the Discharge Process

At the end of this presentation, **pharmacist** participants should be able to:

1. Identify the transition of care where most medication discrepancies typically occur.
2. Recognize the amount of time required to complete medication reconciliation at discharge.

Thomas Yu, PharmD

Evaluation of the safety and efficacy of valganciclovir twice weekly dosing in kidney transplant patients with impaired renal function

At the end of this presentation,

pharmacist participants should be able to:

1. Discuss the differences in dosing recommendations for renal impairment between ganciclovir and valganciclovir.
2. Identify side effect concerns for valganciclovir over-exposure.

Rachel Ralph, PharmD

Accuracy and impact of a penicillin allergy label on hospitalized patient outcomes

At the end of this presentation, **pharmacist** participants should be able to:

1. Review the mechanism and risk of cross-reactivity between cephalosporins and penicillin.
2. Review a treatment algorithm for the use of cephalosporins/carbapenems for a patient with a penicillin allergy.

Sara P. Vu, PharmD

Medication errors in hospitalized patients with HIV: Impact of prospective review by an on-call pharmacy resident

At the end of this presentation, **pharmacist** participants should be able to:

1. Recognize the most common anti-retroviral therapy (ART) medication errors in hospitalized patients with HIV, and at what point during hospitalization they are most likely to occur.
2. Describe the consequences of non-adherence to an appropriate ART regimen.

Katherine V. Zych, PharmD

Type of Activity: Knowledge-based
1.25 credit hours (0.125 CEUs)

UAN: 0121-0000-15-077-L04-P

9:30am - 10:30am

Crystal Room

Pearls for Developing Structured Abstracts

At the end of this presentation, **pharmacist** participants should be able to:

1. List the components of a structured abstract.

2. Describe the process of developing abstracts for professional meetings and manuscript submissions.
3. Provide a list of Do's and Don'ts when writing abstracts.
4. Compose feedback for a submitted abstract.

At the end of this presentation, **technician** participants should be able to:

1. List the components of a structured abstract.
2. Describe the process of developing abstracts for professional meetings and manuscript submissions.
3. Provide a list of Do's and Don'ts when writing abstracts.
4. Compose feedback for a submitted abstract.

Type of Activity: Knowledge-based
1.0 credit hour (0.1 CEU)

UANs: 0121-0000-15-078-L04-P
0121-0000-15-078-L04-T

Michelle T. Bryson, PharmD, BCPS

10:30am - 11:30am

Crystal Room

Translating the Evidence: From Publication to Practice

At the end of this presentation, **pharmacist** participants should be able to:

1. Compare the benefits and risks of 12 months and 30 months of dual antiplatelet therapy after placement of drug-eluting stents.
2. Review the findings of the HEAT-PPCI trial on heparin versus bivalirudin in percutaneous coronary intervention.
3. Describe what effect vitamin D has on fall prevention in elderly women.
4. List limitations of the randomized controlled trials reviewed.

Type of Activity: Knowledge-based
1.0 credit hour (0.1 CEU)

UAN: 0121-0000-15-079-L01-P

Lara K. Ellinger, PharmD, BCPS

Saturday, September 12

Track 3 Student Session

8:00am - 11:30am

Venetian Room

The Vibrant Shuffle on the Path to a Residency: Getting the Inside Look at the Process and People Involved

- PGY1 info: What are your options, How Mid-Year and the ICHP Showcase can help you
- General PGY1 Info - What are your options? (Community and Ambulatory Care)
- General PGY1 Info - What are your options? (Industry)
- General PGY1 Info - What are your options? (Hospital and IT)
- The key to a top curriculum vitae
- The Letter of Intent - what you need to know
- PhORCAs - The new on-line residency application system
- Interview: Getting ready to be interviewed for a PGY1 Residency
- The Match/Ranking Process and Post-match scramble
- Get the inside scoop from past residents
- Get the inside scoop from a residency preceptor

Noelle Chapman, PharmD, BCPS;

Christopher W. Crank, PharmD, MS, BCPS, AQ-ID;

Nora Flint, PharmD, FASHP, BCPS;

Carol Heunisch, PharmD, BCPS;

Abby A. Kahaleh, BSP Pharm, MS, PhD, MPH;

Karen M. Kelly, PharmD;

Frank Paloucek, PharmD, DABAT, FASHP;

Jennifer Phillips, PharmD, BCPS;

Michael Stamatis, PharmD;

Susan R. Winkler, PharmD, BCPS, FCCP;

Lana Wong, PharmD

11:30am - 1:00pm

Terrace Room

Lunch & Awards Program



Patricia C. Kienle, RPh, MPA, FASHP is the Director of Accreditation and Medication Safety for Cardinal Health Innovative Delivery Solutions. She received her pharmacy degree from the Philadelphia College of Pharmacy and Science, and a Masters in Public Administration from Marywood University in Scranton, Pennsylvania. She completed an Executive Fellowship in Patient Safety from Virginia Commonwealth University and is an Adjunct Associate Professor at Wilkes University in Wilkes-Barre, Pennsylvania. She has served on the Board of Directors of the American Society of Health-System Pharmacists and as President of the

Pennsylvania Society of Hospital Pharmacists. She is a Fellow of the American Society of Health-System Pharmacists, named Pharmacist of the Year by the PSHP, and the recipient of the Distinguished Achievement Award in Hospital and Institutional Practice from the American Pharmaceutical Association Academy of Pharmacy Practice and Management, and the Distinguished Leadership Award from ASHP. She has served on the Pharmacotherapy Specialty Council of the Board of Pharmaceutical Specialties, as the pharmacist member of the Hospital Professional and Technical Advisory Committee of the Joint Commission, and on the Board of Governors of the National Patient Safety Foundation. She is a current member of the USP Expert Committee on Compounding, and chair of the Subcommittee and Expert Panel on Hazardous Drugs. Patti is the author of *Compounding Sterile Preparations: ASHP's Visual Guide to Chapter <797>* video and Companion Guide and co-author of *Assuring Continuous Compliance with Joint Commission Standards: A Pharmacy Guide*, 8th edition. She edited *Understanding JCAHO Requirements for Hospital Pharmacies*. She is a frequent presenter to professional groups, with special interests in promoting medication safety, compounding sterile preparations, accreditation and regulatory issues.

Keynote Session

1:00pm - 2:00pm

Crystal Room

Danger, Will Robinson! Overview of USP Chapter <800>

At the end of this presentation, **pharmacist** participants should be able to:

1. Cite the document that defines hazardous drugs (HDs).
2. List the three categories of HDs.
3. Explain the containment strategies related to HDs.
4. Identify elements that could be used for an Assessment of Risk.

5. List the types of personal protective equipment (PPE) that need to be used with HDs.

At the end of this presentation, **technician** participants should be able to:

1. Cite the document that defines hazardous drugs (HDs).
2. List the three categories of HDs.
3. Explain the containment strategies related to HDs.
4. Identify elements that could be used for an Assessment of Risk.
5. List the types of personal protective equipment (PPE) that need to be used with HDs.

Saturday, September 12

Type of Activity: Knowledge-based
1.0 credit hour (0.1 CEU)

UANs: 0121-0000-15-080-L03-P
0121-0000-15-080-L03-T

**Patricia C. Kienle, RPh, MPA,
FASHP**

General Session

2:00pm - 3:00pm

Crystal Room

The End of Life Controversial Conversations

At the end of this presentation,
pharmacist participants should be
able to:

1. Define end-of-life care options for terminally ill patients.
2. Describe common myths about palliative sedation.
3. Discuss the clinical and ethical controversies surrounding pal-

liative sedation and other difficult medical decisions at the end-of-life.

At the end of this presentation,
technician participants should be able to:

1. Define end-of-life care options for terminally ill patients.
2. Describe common myths about palliative sedation.
3. Discuss the clinical and ethical controversies surrounding palliative sedation and other difficult medical decisions at the end-of-life.

Type of Activity: Knowledge-based
1.0 credit hour (0.1 CEU)

UANs: 0121-0000-15-081-L04-P
0121-0000-15-081-L04-T

**Lisa Anderson-Shaw, DPH, MA,
MSN;
Laura Meyer-Junco, PharmD,
BCPS, CPE**

1:00pm - 3:00pm

Oak & Brook Rooms

Residency Showcase

ICHP thanks

Baxalta

for their generous Gold Sponsorship
of the ICHP 2015 Annual Meeting.

CPE Credit Instructions

These are the instructions for obtaining CPE credit for ICHP accredited courses.

Please NOTE: You MUST complete your evaluation submissions by end of day Monday, October 26, 2015.

Please READ all information carefully so you understand the deadlines and how to access credit statements.

To obtain CPE credit for each ICHP accredited course attended, attendees must complete the following requirements.

Quick Overview

- 1. Fill out your CPE Attendance Record (2-part white and yellow form in folder) during sessions.**
- 2. Turn in the White top copy and your Audience Response device at Registration. Save your yellow copy!**
- 3. Go to CESally.com and Login if you have an account; or “Sign Up!” to create an account if new to the site. Important! You must enter your NABP eProfile ID & birthdate as MMDD or you will NOT receive credit.**
- 4. Click on “Your Account” to view your CE Invitations.**
- 5. Select all the Program Titles you attended, and add to your To Do List.**
- 6. Go to your To Do List to complete program evaluations and submit. Follow the directions.**
- 7. Once completed, you will see a submission confirmation message.**
- 8. Go to your CPE Monitor account at NABP.net to print off official transcripts or statements of credit.**

Detailed Steps on how to complete the Evaluation Process

For each session attended, you must fill in the Session Entry Code, which will be announced by the moderators during each session, on your “CPE Attendance Record” sheet (2-part white and yellow form). Please fill in your “Name” information on your CPE Attendance Record. At the end of your participation at the conference, please turn in the white copy of your Attendance Record, and your Audience Response device, at the Registration table. Keep the yellow copy of the CPE Attendance Record for your file as you will need the Session Codes which you wrote down, in order to complete the process of receiving your CPE credit.

After the meeting, all attendees will need to access ICHP’s online CPE system at CESally.com to complete all evaluations and have your credit automatically submitted to CPE Monitor.

Pre-registered attendees: All pre-registered attendees to the 2015 ICHP Annual Meeting were emailed an invitation to the Event by CESally.com.

Onsite registrants: All onsite registrants will need to wait three business days, and watch for an email from CESally.com. This email will come to your Annual Meeting registration email address.

Detailed instructions to complete evaluations online:

Participants in this Annual Meeting - You will need to create your own account on CESally.com in order to access the CPE program, do the evaluations, and submit for credit.

Important! First time users - you must use the EMAIL address you used on your registration form to set up your CESally.com account this first time. Program access is tied to your email address. If you use a different email, you will not be able to see the programs.

To set up your account:

1. Go to www.CESally.com and click on "Sign Up!" Or log in with your existing account.
2. Complete the Sign Up process and select a username and password.

Important Notice: Please store your username and password in a safe place, as ICHP staff will not be able to reset or look up your password or username for you. If you lose or forget your password or username, visit the site and click on "I forgot my password" and it will be emailed to you. You will need to maintain a valid email address with CESally.com.

3. Enter your NABP eProfile ID and birthdate as MMDD when prompted. CESally.com will confirm your eProfile information with CPE Monitor and let you know if there is an error, which you may then correct.
4. Once you have an account, you may either select the event invitation link that should appear on your Account home page (right hand column), OR go to the email invitation and click on the link in the email.
 - Event Invitation Link – takes you to a webpage that lists all the programs from the Annual Meeting.
 - Please note we have added Pharmacist and Technician at the end of each title so you will know for sure which one to select.
 - Once you use the email link to go to the Event Invitation page, you may also access your program choices through the Search function if you prefer. But you must begin by accepting the invitation so that you may SEE the Annual Meeting programs.
5. Identify the program(s) you attended and ADD it to your To Do List.

Please pay CLOSE attention to the Title and the Pharmacist or Technician label at the end of each title.

PHARMACISTS: You may NOT receive credit for Technician programs.

TECHNICIANS: As of January 1, 2015, PTCB requires Technicians use only Technician-specific credit for CPE programs to recertify. If Technicians have 2014 Pharmacist-specific credit, you may use that to recertify in 2015. But ALL credit earned in 2015, must be Technician-specific.

6. Click the SAVE CE tab at the bottom of the page – that moves all selected programs to your To Do List.
7. When you are ready to complete your CPE credit process, go to the To Do tab at the top of the webpage and follow the directions to EVALUATE the programs.
 - You will verify your attendance, provide the session ENTRY code that was given to you during the program, and complete an evaluation of the activity and the speaker(s).
8. Click on "Report CE". Your CPE credit will be uploaded to CPE Monitor automatically. You will see a submission confirmation message when you have successfully completed the process.
9. If you have any questions contact us at members@ichpnet.org.
10. Go to www.NABP.net to download an official copy of your CPE transcripts. Click on the CPE Monitor link and log in to access your CPE Monitor records.

Important: Per ACPE requirements, official transcripts and statements of credit may now be accessed ONLY through CPE Monitor. You may download a CPE Program Information sheet only from CESally.com for each submission for your personal records.

PLEASE Note: You will have until **the end of day Monday, October 26, 2015** to complete your online evaluation and submit your CPE credit. ICHP policy requires that CPE evaluations be completed within a specific deadline to ensure timely submission of your CPE credit to your CPE Monitor account, to meet the ACPE deadlines. Anything submitted after the ACPE deadlines will be rejected by CPE Monitor. If you miss the deadline you will lose your credit.

So please do not delay! If you experience any problems, we will need time to assist you.

Please contact members@ichpnet.org if you have questions. Thank you!

Faculty and Disclosures

It is the policy of the Illinois Council of Health-System Pharmacists to ensure balance, objectivity, and scientific rigor in all their individually or jointly presented continuing education programs. All faculty participating in any Illinois Council of Health-System Pharmacists' continuing education programs are expected to disclose any real or apparent conflict(s) of interest that may have any bearing on the subject matter of the continuing education program. Disclosure pertains to relationships with any pharmaceutical companies, biomedical device manufacturers, or other corporations whose products or services are related to the subject matter of the presentation topic.

The intent of this disclosure is not to prevent a speaker with a potential conflict of interest from making a presentation, but to let the audience know about the relationship before the presentation. It is intended that financial interests or affiliations be openly identified so that, with the full disclosure of the facts, the attendees may form their own judgments about the presentation.

Faculty disclosures are listed below. Any conflicts were resolved through peer review of their presentations.

Name	Company	Relationship
Speakers:		
John Esterly	BioCryst Pharmaceuticals, Inc.	Consultant / Clinical Investigator: (10/2014)
Michelle Martin	Gilead	Stockholder Off Label Use Discussion: Included
Edith Nutescu	Janssen NHLBI, Roche	Consultant / Clinical investigator Grant / Research Support
Patricia Kienle	Cardinal Health	Stockholder Financial / Material Interest: Employee Member, USP Compounding Expert Committee
Lori Wilken	Pfizer	Grant / Research Support Off Label Use Discussion: Included
Planning Committee:		
Mary Ann Kliethermes	Clinical Pharmacy Systems	Financial / Material Interest: Owners
David Tjhio	Premier	Financial / Material Interest: Employee
Patricia Wegner	Pfizer, Cardinal	Stockholder

Lisa Anderson-Shaw, DPH, MA, MSN
Clinical Assistant Professor of Medical-Surgical Nursing in Medical Education; Clinical Director, Clinical Ethics Consulting Services
UIC College of Nursing; University of Illinois Medical Center
Chicago, IL

Peggy S. Bickham, PharmD
Clinical Assistant Professor; Assistant Director of Specialty and Support Services
University of Illinois at Chicago College of Pharmacy; University of Illinois Hospital
Chicago, IL

Reid B. Blackwelder, MD, FAAFP
Professor and Director, Medical Student Education Division, Department of Family Medicine
East Tennessee State University, James H. Quillen College of Medicine
Johnson City, TN

Michelle T. Bryson, PharmD, BCPS
Clinical Assistant Professor; Drug Information Clinical Pharmacist
University of Illinois at Chicago College of Pharmacy; Drug Information Group
Chicago, IL

Noelle Chapman, PharmD, BCPS
Pharmacy Manager, Residency Coordinator
Northwestern Memorial Hospital
Chicago, IL

Christopher W. Crank, PharmD, MS, BCPS AQ-ID
Director of Pharmacy Services
Rush-Copley Medical Center
Aurora, IL

L. Brian Cross, PharmD, BCACP, CDE
Associate Professor and Vice Chair
East Tennessee State University
Bill Gatton College of Pharmacy
Johnson City, TN

Lara K. Ellinger, PharmD, BCPS

Clinical Assistant Professor; Drug Information Clinical Pharmacist
University of Illinois at Chicago
College of Pharmacy; Drug Information Group
Chicago, IL

John Esterly, PharmD, BCPS AQ-ID

Associate Professor; Infectious Diseases Pharmacist; PGY1 Residency Program Coordinator
Chicago State University College of Pharmacy; Northwestern Memorial Hospital
Chicago, IL

Nora Flint, PharmD, FASHP, BCPS

Associate Corporate Director, Pharmacy Practice Residency
Department of Pharmacy.
Rush University Medical Center
Chicago, IL

Christopher R. Fortier, PharmD, FASHP

Chief Pharmacy Officer
Massachusetts General Hospital
Boston, MA

Lana Gerzenshtein, PharmD, BCPS AQ-ID

Pharmacy Practice Coordinator
Northwestern Memorial Hospital
Specialty Pharmacy
Chicago, IL

Michelle Geurink, RPh

Pharmacy Informatics Specialist
OSF HealthCare
Peoria, IL

Heather M. Harper, PharmD, BCPS

Regional Informatics Pharmacist
OSF St. Francis Medical Center
Peoria, IL

Joshua Hartman, PharmD, MS Health Informatics

Clinical Informatics Specialist
Sinai Health System
Chicago, IL

Carol Heunisch, PharmD, BCPS

Senior Pharmacy Manager
NorthShore University
HealthSystem-Skokie Hospital
Skokie, IL

Daniel E. Hickman, CPhT

Lead Pharmacy Technician
OSF St. Francis Medical Center
Children's Hospital of Illinois
Peoria, IL

Heather D. Horton, PharmD, MS

Adjunct Faculty, Pharmacy Technician Program; External Revenue Coordinator, Ambulatory Care Pharmacy Services
South Suburban College; University of Illinois at Chicago
Chicago, IL

Abby A. Kahaleh, BSPharm, MS, PhD, MPH

Associate Professor of Clinical & Administrative Science
Roosevelt University College of Pharmacy
Schaumburg, IL

Karen M. Kelly, PharmD

Pharmacy Manager, Inpatient Pharmacy
NorthShore University HealthSystem - Evanston Hospital
Evanston, IL

Ayesha Khan, PharmD

Assistant Clinical Professor; General Medicine Clinical Pharmacist
Chicago State University College of Pharmacy; Ingalls Memorial Hospital
Chicago, IL

Zahra Khudeira, PharmD, MA, BCPS, CPPS

Medication Safety Officer
Sinai Health System
Chicago, IL

Patricia C. Kienle, RPh, MPA, FASHP

Director of Accreditation and Medication Safety
Cardinal Health Innovative Delivery Solutions
Houston, TX

Michelle T. Martin, PharmD, BCPS, BCACP

Clinical Pharmacist; Assistant Professor
University of Illinois Hospital and Health Sciences System;
University of Illinois at Chicago
College of Pharmacy
Chicago, IL

Laura Meyer-Junco, PharmD, BCPS, CPE

Clinical Assistant Professor
University of Illinois at Chicago
College of Pharmacy
Chicago, IL

Edith A. Nutescu, PharmD

Clinical Professor; Clinical Director, Antithrombosis Center
University of Illinois at Chicago
College of Pharmacy;
University of Illinois Hospital
Chicago, IL

Nick O'Donnell, PharmD

Infectious Disease Fellow
Northwestern Memorial Hospital;
Midwestern University Chicago
College of Pharmacy
Downers Grove, IL

Frank Paloucek, PharmD, DABAT, FASHP

Director, Residency Programs; Clinical Associate Professor in Pharmacy Practice
Department of Pharmacy Practice,
University of Illinois at Chicago
College of Pharmacy
Chicago, IL

Rupal Patel, PharmD

*Infectious Diseases Pharmacy
Specialist*

Ann & Robert H. Lurie Children's
Hospital of Chicago
Chicago, IL

Deepika Pereira, PharmD, BCPS

Critical Care Pharmacist

Northwestern Memorial Hospital
Chicago, IL

Jennifer Phillips, PharmD, BCPS

*Associate Professor, Pharmacy
Practice; Drug Information Specialist*
Midwestern University Chicago
College of Pharmacy;
Advocate Lutheran General Hospital
Downers Grove, IL

Nicholas G. Popovich, PhD, RPh

*Professor and Associate Dean for
Professional Development*
University of Illinois at Chicago
College of Pharmacy
Chicago, IL

Rachel Ralph, PharmD

*Clinical Pharmacist, Internal Medicine;
(Formerly PGY1 Pharmacy Practice
Resident)*
Northwestern Memorial Hospital
Chicago, IL

**Christine Schumacher, PharmD,
BCPS, CDE, BC-ADM**

*Assistant Professor; Clinical Pharma-
cist, Internal Medicine*
Midwestern University Chicago
College of Pharmacy; Advocate
Healthcare
Downers Grove, IL

Bryan Shaw, PharmD

Clinical Pharmacist
PGY1 Longitudinal Resident
Northwestern Memorial Hospital
Chicago, IL

**Janet A. Silvester, PharmD, MBA,
FASHP**

*Vice President, Accreditation
Services*

American Society of Health-System
Pharmacists
Bethesda, MD

Melissa Smith, PharmD

PGY2 Informatics Resident
St. Elizabeth's Hospital
Belleville, IL

Michael Stamatis, PharmD

Post-Doctoral Fellow
Genentech and the Rutgers Insti-
tute for Pharmaceutical Industry
Fellowships
Piscataway, NJ

Karin L. Terry, PharmD

Medication Safety Pharmacist
OSF St. Francis Medical Center
Peoria, IL

Jeff Thiel, PharmD, MS

Director of Pharmacy
NorthShore University HealthSystem
Evanston Hospital
Evanston, IL

Curtis L. Triplitt, PharmD, CDE

*Associate Director, Diabetes
Research Center; Associate Professor,
Department of Medicine, Division of
Diabetes*
Texas Diabetes Institute;
University of Texas Health Science
Center
San Antonio, TX

Sara Vander Ploeg, PharmD

*Clinical Pharmacist; (Formerly PGY1
Pharmacy Practice Resident)*
Northwestern Memorial Hospital
Chicago, IL

Sara P. Vu, PharmD

*Clinical Pharmacist;
(Formerly PGY1 Pharmacy Practice
Resident at Swedish Covenant
Hospital);*
Mercy Hospital and Health System
Chicago, IL

**Lori A. Wilken, PharmD, BCACP,
TT-S, AE-C**

*Clinical Assistant Professor; Clinical
Pharmacist, Pulmonary Clinic*
University of Illinois at Chicago
College of Pharmacy;
University of Illinois Hospital
Chicago, IL

**Susan R. Winkler, PharmD, BCPS,
FCCP**

*Professor and Chair, Pharmacy
Practice*
Midwestern University Chicago
College of Pharmacy
Downers Grove, IL

Lana Wong, PharmD

PGY-1 Pharmacy Practice Resident
Rush University Medical Center
Chicago, IL

Thomas Yu, PharmD

Outpatient Pharmacy Manager
Mount Sinai Hospital Medical Center
Chicago, IL

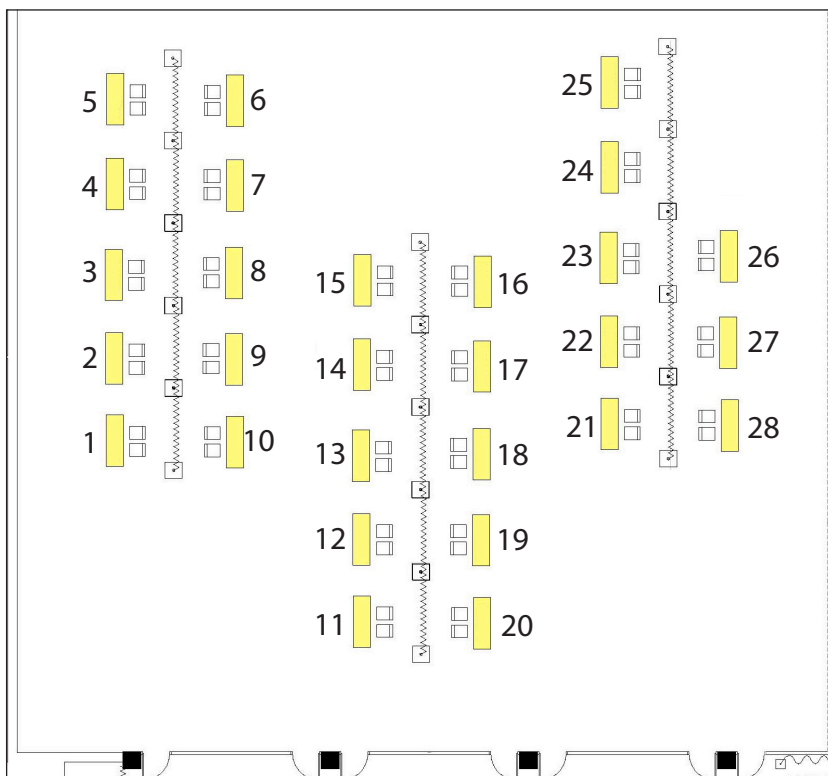
**Elizabeth Zdyb, PharmD, MBA,
BCPS**

*Assistant Professor; Clinical
Pharmacist/ Team Leader,
Emergency Medicine*
Midwestern University Chicago
College of Pharmacy; Northwestern
Memorial Hospital
Downers Grove, IL

Katherine V. Zych, PharmD

*PGY2 Drug Information Resident;
(Formerly PGY1 Pharmacy Practice
Resident at Rush University Medical
Center);*
Drug Information Group, University
of Illinois Chicago College of
Pharmacy
Chicago, IL

Residency Showcase



- 28 Advocate Christ Medical Center & Advocate Childrens Hospital, Oak Lawn, IL
- 14 Aurora Health Care, *Milwaukee, WI*
- 26 Borgess Medical Center, *Kalamazoo, MI*
- 1 Captain James A. Lovell Federal Healthcare Center, *North Chicago, IL*
- 18 Community Healthcare System - Community Hospital, *Munster, IN*
- 13 CPS/Mercy Hospital and Medical Center, *Chicago, IL*
- 22 Franciscan St. Elizabeth Health, *Lafayette, IN*
- 2 Franciscan St. Margaret Health, *Hammond/Dyer, IN*
- 27 Froedtert & the Medical College of Wisconsin, Froedtert Hospital, *Milwaukee, WI*
- 17 HSHS St. John's Hospital, *Springfield, IL*
- 8 Jesse Brown VA Medical Center, *Chicago, IL*
- 16 Loyola University Medical Center, *Maywood, IL*
- 9 Memorial Medical Center, *Springfield, IL*
- 19 Mercy Health Saint Mary's, *Grand Rapids, MI*
- 20 Mount Sinai Hospital, *Chicago, IL*
- 21 NorthShore University HealthSystem, *Evanston, IL*
- 12 Northwestern Memorial Hospital, *Chicago, IL*
- 25 OSF Saint Francis Medical Center, *Peoria, IL*
- 10 Palos Community Hospital, *Palos Heights, IL*
- 11 Presence Health, *Joliet, IL*
- 7 Rush University Medical Center, *Chicago, IL*
- 4 Rutgers Pharmaceutical Industry Fellowship Program, *Piscataway, NJ*
- 15 St. Elizabeth's Hospital, *Belleville, IL*
- 3 SwedishAmerican Hospital, *Rockford, IL*
- 24 Takeda Pharmaceuticals & Purdue University Regulatory Affairs Fellowship, *Deerfield, IL*
- 29 University of Illinois, *Chicago, IL*
- 23 The University of Toledo Medical Center, *Toledo, OH*
- 5 VA Center for Medication Safety, *Hines, IL*
- 6 Wheaton Franciscan Healthcare, *Milwaukee, WI; Racine, WI; Waterloo, IA*

ICHP thanks



for their generous
Silver Sponsorship
of the ICHP 2015
Annual Meeting.

Exhibitors

114 Lilly	113 Sagent Pharmaceuticals, Inc.	212 Carefusion	213 MedKeeper	312 Mylan Institutional, Inc.	313	415 ICHP
112 Critical Environments Professionals, Inc.	111 Teva Pharmaceuticals	210 CSL Behring	211	310 AstraZeneca	311 Aethon, Inc.	410 IL Medicaid
110 Sandoz Biopharmaceuticals	109 Carstens	208 AuroMedics	209 Otsuka America Pharmaceutical	308 Boehringer Ingelheim	309 Cooper-Atkins	408 Sanofi
108 Equashield, LLC	107 TheraDoc Premier	206 Eisai Oncology	207 Amgen	306 Intelliguard	307 ScriptPro	406 Janssen
106 United Pharmacy Staffing	105 Omniceil	204 Clean Air Flow/ Innerspace	205 Amgen	304 Grifols	305 BD	404 Hospira
104 Sunovion	103 Kit Check	202 Wolters Kluwer	203	302	303 CAPS/ B.Braun	402 Astellas
102 McKesson	101 Baxter	200 PharMEDium	201 Merck	300 Novo Nordisk	301 The Medicines Company	400 Amerisource Bergen
100 Baxalta						403 UIC

- | | | |
|--|---|--|
| 311/313 Aethon, Inc. | 210 CSL Behring | 209/211 Otsuka America Pharmaceutical |
| 400 Amerisource Bergen | 206 Eisai Oncology | 200 PharMEDium Services, LLC |
| 205 Amgen - Cardiology and Bone Health | 108 Equashield, LLC | <i>Educational Grant Provider</i> |
| 207 Amgen | 304 Grifols | 411 Roosevelt University College of Pharmacy |
| 402 Astellas Pharma US, Inc. | 404 Hospira | 405 Rosalind Franklin University |
| 310 AstraZeneca | 415 ICHP | 113 Sagent Pharmaceuticals, Inc. |
| 208 AuroMedics | 410 Illinois Medicaid | <i>Silver Sponsor</i> |
| 100 Baxalta | 306 Intelliguard RFID Solutions | 110 Sandoz Biopharmaceutical |
| <i>Gold Sponsor</i> | 406 Janssen Pharmaceuticals | 408 Sanofi |
| 101 Baxter International | 103 Kit Check | 307 ScriptPro |
| <i>Gold Sponsor</i> | 114 Lilly USA, LLC | 409 SIUE School of Pharmacy |
| 305 BD | 102 McKesson | 104 Sunovion Pharmaceuticals, Inc. |
| 212 BD/CareFusion | <i>Silver Sponsor</i> | 111 Teva Pharmaceuticals |
| 308 Boehringer Ingelheim Pharmaceuticals | 213 MedKeeper | 301 The Medicines Company |
| 303 CAPS/B. Braun Medical, Inc. | 201/203 Merck, Inc. | 107 TheraDoc Premier |
| 109 Carstens | <i>Platinum Sponsor</i> | <i>Silver Sponsor</i> |
| 413 Chicago State University College of Pharmacy | 407 Midwestern University Chicago College of Pharmacy | 403 UIC College of Pharmacy |
| 204 Clean Air Flow / Innerspace | 312 Mylan Institutional, Inc. | 106 UNITED Pharmacy Staffing |
| 309 Cooper-Atkins | 300/302 Novo Nordisk | <i>Silver Sponsor</i> |
| 112 Critical Environments Professionals, Inc. | <i>Platinum Sponsor</i> | 202 Wolters Kluwer |
| | 105 Omnicell | |



Upcoming Events 2016

Legislative Day
Wednesday, March 2, 2016
Springfield, IL

ICHP Spring Meeting
April 8-9, 2016
East Peoria, IL

ICHP Annual Meeting
September 15-17, 2016
Oakbrook Terrace, IL

ICHP thanks



for their generous
Educational Grant.

Thank You Meeting Sponsorships

ICHP would like to thank these companies for providing sponsorships for the 2015 Annual Meeting.

Platinum Sponsors



MERCK



Gold Sponsors

Baxalta

Baxter



Silver Sponsors



MCKESSON



SAGENT™

