



September 14 - 16, 2017 | Oakbrook Terrace, Illinois

WEB BROCHURE

EARN UP
TO 16.25
HOURS OF
CPE

ICHP President, Charlene Hope, mentioned in her inaugural address that our mission as pharmacists and pharmacy technicians is to actively participate in redesigning healthcare delivery. Numerous opportunities for healthcare improvement and cost savings exist in the current environment. What can we do to navigate the challenges we face in healthcare and advance our profession? Her answer – INNOVATION. Pharmacists and technicians should be entrepreneurs and take on these three traits: 1) be courageous, 2) adopt “failure” as a synonym for “learning opportunity”, and 3) be creative.

Active participation at your institution and in your professional organization is vital to staying current and striving for excellence. Continuous professional development keeps you on the cutting edge. Join us at the 2017 Annual Meeting to Launch Innovation in Pharmacy! Learn about practicing at the top of your license, how to establish new and innovative practice, how to hone your leadership and practice skills, how to establish and maintain safety measures, how to use technology to advance and streamline workflow, how to make an impact in healthcare.

New this year ICHP is providing the ASHP Residency Program Design and Conduct Workshop at the Annual Meeting. ICHP is committed to expanding residency programs within the state and Midwest and is investing in hosting this workshop to help elevate practice and patient care. Members receive a special discounted registration to the workshop and an additional discount for attending both the workshop and the Annual Meeting.

Continuing with the theme of innovation, ICHP will be showcasing the 2017 Best Practice Award at the meeting. The winner will display their innovative practice/program, followed up with a home study continuing education offering in the November KeePosted™. ICHP has promoted innovative and best practices in Illinois by supporting this award for the last ten years.

Network with your peers to share your innovative practices or identify programs you can implement at your own institution. For the first time, ICHP will be offering networking sessions to launch the meeting on Thursday. Topic areas include 1) Ambulatory Care, 2) Leadership, 3) Medication Safety and 4) Pharmacy Practice. Engage in conversations and contribute to the wealth of knowledge available during this networking time. Only you can make it a success.

The Annual Meeting will continue to have its core offerings of student sessions, technician sessions and exhibit programming, along with an informative Town Hall Lunch and an exciting Awards Luncheon. Don't miss out, register today!

What innovation could you launch for pharmacy?

MEETING-AT-A-GLANCE (tentative schedule)



LAUNCH INNOVATION IN PHARMACY September 14 - 16, 2017 | Oakbrook Terrace, Illinois

2017 ANNUAL MEETING GENERAL LEARNING OBJECTIVES

1. Explain how to implement innovation in pharmacy practice.
2. Identify the need for pharmacists and technicians to practice at the top of their license.
3. Describe ways to reduce costs while maintaining positive patient outcomes.
4. State the value of proper transitions in care.
5. Discuss several IT options to improve pharmacy practice.
6. List recent medication safety initiatives and their impact.
7. Address current and visionary clinical practice in the hospital and ambulatory care settings.

THURSDAY, SEPTEMBER 14, 2017

Time	Session/Event	Room
8:00am - 6:15pm	ICHP Registration Desk Hours	Foyer
8:00am - 8:45am	Continental Breakfast	Foyer
8:45am - 9:45am	Networking Sessions <i>(no CPE provided)</i>	Terrace & Venetian Rooms
10:00am - 11:15am	General Sessions	Terrace & Venetian Rooms
11:30am - 1:00pm	Lunch Symposium	Crystal Room
11:30am - 1:00pm	Past Presidents Lunch <i>(invitation only)</i>	English Room
1:10pm - 3:00pm	Keynote Session	Terrace & Venetian Rooms
3:00pm - 4:30pm	Exhibit Program and Break	Oak & Brook Rooms
4:30pm - 6:00pm	Track 1 - Management Session	Terrace Room
4:30pm - 6:00pm	Track 2 - Clinical Session	Venetian Room
6:00pm - 7:00pm	Membership Spotlight Reception (Hosted by the NPN)	Foyer

FRIDAY, SEPTEMBER 15, 2017

Time	Session/Event	Room
7:00am - 6:00pm	ICHP Registration Desk Hours	Foyer
7:00am - 8:00am	Continental Breakfast	Foyer
8:00am - 10:00am	General Sessions	Terrace & Venetian Rooms
8:00am - 10:00am	Reverse Exhibit <i>(invitation only)</i>	Crystal Room
8:00am - 5:30pm	ASHP Residency Program Design & Conduct Workshop (RPDC) <i>(Separate Registration Required)</i>	English Room
10:00am - 12:00pm	Exhibit Program and Break	Oak & Brook Rooms
12:00pm - 1:15pm	Lunch & Town Hall Meeting	Terrace & Venetian Rooms
1:30pm - 2:30pm	Keynote Session	Terrace & Venetian Rooms
2:30pm - 5:30pm	Track 1 - Pharmacy Technology Session	Crystal Room
2:30pm - 5:30pm	Track 2 - Clinical Session	Venetian Room
3:30pm - 3:45pm	Break	Foyer
7:00pm - 9:30pm	President's Dinner <i>(invitation only)</i>	Reel Club

SATURDAY, SEPTEMBER 16, 2017

Time	Session/Event	Room
7:00am - 3:15pm	ICHP Registration Desk Hours	Foyer
7:00am - 8:00am	Continental Breakfast	Foyer
8:00am - 11:30am	Track 1 - Technician Session	English Room
8:00am - 11:30am	Track 2 - Pharmacy Practice Session	Crystal Room
8:00am - 11:30am	Track 3 - Student Session	Venetian Room
9:15am - 9:30am	Break	Foyer
11:30am - 1:00pm	Lunch & Awards Program	Terrace Room
1:00pm - 3:00pm	Keynote and Closing General Session	Crystal Room
1:00pm - 3:00pm	Residency Showcase	Oak & Brook Rooms

THANK YOU MEETING SPONSORSHIPS

This document is
frequently updated!
Check ichpnet.org > Events
> Annual Meeting for updates.
LAST UPDATED:
5/24/2017

ICHP would like to thank these companies for providing sponsorships for the
2017 Annual Meeting.

PLATINUM SPONSOR

GOLD SPONSOR



SILVER SPONSORS



GENERAL MEETING INFO

This document is frequently updated!
Check ichpnet.org > Events
> Annual Meeting for updates.
LAST UPDATED: 5/24/2017

DATE AND LOCATION

The ICHP 2017 Annual Meeting will take place on Thursday, September 14, Friday, September 15, and Saturday, September 16. Meetings and CPE sessions will be held in the Drury Lane Theatre and Conference Center, 100 Drury Lane in Oakbrook Terrace, Illinois 60181. Drury Lane is conveniently located in Chicago's prestigious western suburbs, minutes from downtown and major airports.

CITY ATTRACTIONS

There is plenty to do while attending the ICHP Annual Meeting. Explore the area and take advantage of the wonderful shopping and restaurants available at Oakbrook Center Mall. While at Drury Lane Theatre and Conference Center, why not take in a show? Drury Lane Theatre will be presenting "Rock of Ages" based on a book by Chris D'Ariento. Rock back to a time of big egos, big guitar solos, and even bigger hair with Rock of Ages. Nominated for five Tony Awards, Rock of Ages features a mix of 28 classic 80s hits by Bon Jovi, Journey, Styx and more including "Don't Stop Believin'," "We Built This City," and "The Final Countdown." Rock of Ages follows aspiring rockstar Drew and his sweetheart, Sherri, as they fight to save Hollywood's Sunset Strip. Don't miss a musical so awesome, you'll want to rock out again!

MEETING DRESS CODE

The meeting dress code is business casual. The meeting room temperatures may vary – please remember to bring a sweater or jacket.

HOTEL ACCOMMODATIONS

All attendees are responsible for making their own hotel reservations. Special convention room rates (Single/Double \$139, Triple \$149, Quad \$159 for Wed-Fri) are available to attendees at **The Hilton Garden Inn in Oakbrook Terrace** (1000 Drury Lane, Oakbrook Terrace, IL 60181). These rates are available by calling The Hilton Garden Inn (1-877-STAY-HGI) prior to August 22 and mentioning that you are attending ICHP's Annual Meeting!

REGISTRATION

Pre-register by Tuesday, August 22 for early bird rates. Registration is available online (ichpnet.org/events/annual_meeting) or you can also complete a paper registration.

Meeting materials are available for pick-up during designated hours at the meeting. CPE handouts will be available online prior to the meeting. The ICHP registration desk will be located in the conference center foyer. Registration desk hours are:

- ◆ THURSDAY, SEPTEMBER 14
8:00 AM - 6:15 PM
- ◆ FRIDAY, SEPTEMBER 15
7:00 AM - 6:00 PM
- ◆ SATURDAY, SEPTEMBER 16
7:00 AM - 3:15 PM

PROGRAMMING

Program variations may occur.

TARGET AUDIENCE

Health-system pharmacists and pharmacy technicians; pharmacy students.

FACULTY DISCLOSURE

It is the policy of the Illinois Council of Health-System Pharmacists (ICHP) to ensure balance, independence, objectivity, and scientific rigor in all of its education programs. In accordance with this policy, faculty must disclose to the participants any significant relationships with commercial companies whose products or devices may be mentioned in faculty presentations, or with the commercial supporter of these continuing pharmacy education programs. These disclosures are included in the syllabus and will be announced during the program.

CONTINUING PHARMACY EDUCATION CREDIT

Education sessions will be offered for CPE credit and registrants may earn up to 16.25 contact hours (1.625 CEUs) at this meeting (ICHP determines the number of contact hours for each session).

Please note: PTCB requires CPhTs to earn only pharmacy technician-specific ("T-specific") credit to qualify for recertification. As of January 1, 2015, ALL CPE credit earned must be T-specific. In addition, PTCB reduced the number of allowable CPE hours earned through in-service training from 10 to 5.



ACCREDITATION

The Illinois Council of Health-System Pharmacists (ICHP), The Center for Independent Healthcare Education (CIHE), and The Medical Learning Institute, Inc. (MLI) are accredited by the Accreditation Council for Pharmacy Education (ACPE) as providers of continuing pharmacy education. Registrants at the 2017 ICHP Annual Meeting may earn a maximum of 16.25 contact hours of continuing pharmacy education in states that recognize ACPE providers (13.25 contact hours from ICHP; 2.0 contact hours from CIHE; 1.0 contact hour from MLI). Please refer to the full meeting brochure (updated regularly) for complete accreditation information.

PROGRAM EVALUATIONS AND CREDIT

ICHP ACCREDITED PROGRAMMING

In order to receive continuing pharmacy education (CPE) credit, all meeting attendees will need to access CESally.com to complete evaluations. Credit will be reported to CPE Monitor.

You will have 7 weeks after the Annual Meeting to complete your online evaluations and submit your request for CPE credit. **Do not delay in completing your ICHP evaluations.** Instructions for completing ICHP live program evaluations online will be included in the meeting folder provided to you at the registration desk. When completing your program evaluation for credit, if a CPE program number ends in both 'P' and 'T', pharmacists must choose the 'P' program and technicians must choose the 'T' program.

CIHE ACCREDITED PROGRAMMING

To receive credit, participants must complete and return the Activity Evaluation Form. The information that you participated will be uploaded to CPE Monitor within 4 week, and you will be able to access your credits from your NABP profile.

MLI ACCREDITED PROGRAMMING

To receive credit for this CPE activity, please take a few minutes to complete the pre-activity assessment and evaluation form and return it to the on-site coordinator. Your confirmation of reported participation will be e-mailed to you within 4 weeks. You may also choose to complete this evaluation form off-site, return it by mail or fax to:

Medical Learning Institute, Inc.

203 Main Street, Suite 249

Flemington, NJ 08822

609.333.1694 (fax)

For questions regarding the accreditation of this activity, please contact Medical Learning Institute, Inc. at 609.333.1693 or ndane@mlicme.org. For pharmacists and pharmacy technicians, Medical Learning Institute, Inc. will accept your completed evaluation form up to 30 days following participation and will report your participation in this educational activity to the NABP ONLY if you provide your NABP e-Profile number and date of birth.

Within 6 weeks of participation, you will receive a confirmation email and can then view your participation record at the NABP website: www.mycpemonitor.net.

CPE MONITOR

Your NABP e-Profile ID is required to receive CPE credit. Visit www.mycpemonitor.net for more information.

PLEASE REFER TO THE DETAILED SCHEDULE (UPDATED REGULARLY) FOR COMPLETE ACCREDITATION INFORMATION ON EACH PROGRAM.

ACPE UNIVERSAL ACTIVITY NUMBERS

0121-0000-17-070-L01-P
0121-0000-17-070-L01-T
0121-0000-17-071-L04-P
0121-0000-17-071-L04-T
0121-0000-17-072-L04-P
0121-0000-17-072-L04-T
0121-0000-17-073-L04-P
0121-0000-17-073-L04-T
0121-0000-17-074-L04-P
0121-0000-17-074-L04-T
0121-0000-17-075-L01-P
0121-0000-17-075-L01-T
0121-0000-17-076-L04-P
0121-0000-17-077-L04-T
0121-0000-17-078-L05-P
0121-0000-17-078-L05-T
0121-0000-17-079-L04-P
0121-0000-17-079-L04-T
0121-0000-17-080-L04-P
0121-0000-17-080-L04-T
0121-0000-17-081-L04-P
0121-0000-17-081-L04-T
0121-0000-17-082-L02-P
0121-0000-17-082-L02-T
0121-0000-17-083-L01-P
0121-0000-17-083-L01-T
0121-0000-17-084-L01-P
0121-0000-17-084-L01-T
0121-0000-17-085-L05-P
0121-0000-17-085-L05-T
0121-0000-17-086-L04-P
0121-0000-17-086-L04-T
0121-0000-17-087-L03-P
0121-0000-17-087-L03-T
0121-0000-17-088-L04-P
0121-0000-17-089-L03-P
0121-0000-17-089-L03-T
0121-0000-17-090-L03-P
0121-0000-17-090-L03-T
0468-0000-17-001-L01-P
0468-0000-17-006-L01-T
0473-9999-17-002-L01-P

THURSDAY, SEPTEMBER 14

This document is
frequently updated!
Check ichpnet.org > Events
> Annual Meeting for
updates.
LAST UPDATED:
5/24/2017



THURSDAY AT-A-GLANCE

8:00AM - 6:15PM

ICHP REGISTRATION DESK HOURS
Foyer

8:00AM - 8:45AM

CONTINENTAL BREAKFAST
Foyer

8:45AM - 9:45AM

NETWORKING SESSIONS
(no CPE provided)
Terrace & Venetian Rooms

10:00AM - 11:15AM

GENERAL SESSIONS
Terrace & Venetian Rooms

11:30AM - 1:00PM

LUNCH SYMPOSIUM
Crystal Room

11:30AM - 1:00PM

PAST PRESIDENTS' LUNCH
(invitation only)
English Room

1:10PM - 3:00PM

KEYNOTE SESSION
Terrace & Venetian Rooms

3:00PM - 4:30PM

EXHIBIT PROGRAM AND BREAK
Oak & Brook Rooms

4:30PM - 6:00PM

TRACK 1 - MANAGEMENT SESSION
Terrace Room

4:30PM - 6:00PM

TRACK 2 - CLINICAL SESSION
Venetian Room

6:00PM - 7:00PM

MEMBERSHIP SPOTLIGHT RECEPTION
Hosted by the NPN
Foyer

8:00AM - 8:45AM

Foyer
CONTINENTAL BREAKFAST

NETWORKING SESSIONS

8:45AM - 9:45AM

Terrace & Venetian Rooms

PATIENT SAFETY

Lara Ellinger, PharmD, BCPS

AMBULATORY CARE

Dawn Hunsberger, PharmD

LEADERSHIP

Anthony Scott, PharmD

PHARMACY PRACTICE

Randall Knoebel, PharmD, BCOP
Elizabeth Short, PharmD, BCPS

GENERAL SESSION

10:00AM - 11:15AM

Terrace & Venetian Rooms

READY TO LAUNCH: ANTIMICROBIAL STEWARDSHIP FOR ALL

At the end of this presentation, **pharmacist** participants should be able to:

1. Explain the need for antimicrobial stewardship in today's healthcare environment.
2. Name organisms that have been identified as particularly concerning to public health.
3. List strategies to achieve the CDC core elements and address resistant organisms.

At the end of this presentation, **technician** participants should be able to:

1. Explain the need for antimicrobial stewardship in today's healthcare environment.
2. Name organisms that have been identified as particularly concerning to public health.
3. List strategies to achieve the CDC core elements and address resistant organisms.

Type of Activity: Knowledge-based
1.25 contact hour (0.125 CEU)
UANs: 0121-0000-17-070-L01-P
0121-0000-17-070-L01-T

Alan Gross, PharmD, BCPS AQ-ID;
Margaret Heger, PharmD, BCPS,
BCPPS;
Jennifer Pisano, MD;
Radhika Polisetty, PharmD, BCPS
AQ-ID, AAHIVP;
Lucas Schulz, PharmD, BCPS AQ-ID

11:30AM - 1:00PM

English Room

PAST PRESIDENTS' LUNCH

(invitation only)

11:30AM - 12:00PM

Crystal Room

LUNCH SYMPOSIUM

12:00PM - 1:00PM

Crystal Room

REDUCING HOSPITAL RE- ADMISSIONS IN HEART FAILURE: PHARMACY'S PIVOTAL ROLE

At the end of this presentation,
pharmacist participants should be
able to:

1. Describe the high incidence and burden of HF, including the risk of hospitalization and the need to meet quality metrics for the reduction of readmissions in HF
2. Explain the complex pathophysiology and risk factors for HF
3. Integrate new classes of pharmacologic agents for HF into the current effective treatment paradigm
4. Plan for the use of biomarkers and novel electronic monitoring technologies to workup, monitor treatment follow-up and medication adjustment in HF

At the end of this presentation,
technician participants should be
able to:

1. Explain the burden of and challenges faced in reducing hospitalization and readmission in HF
2. Describe the types, causes, and signs and symptoms of HF
3. Identify new classes of pharmacologic agents for HF
4. Recognize new frontiers in workup, monitoring and treatment in HF

Type of Activity: Knowledge-based
1.0 contact hour (0.10 CEU)

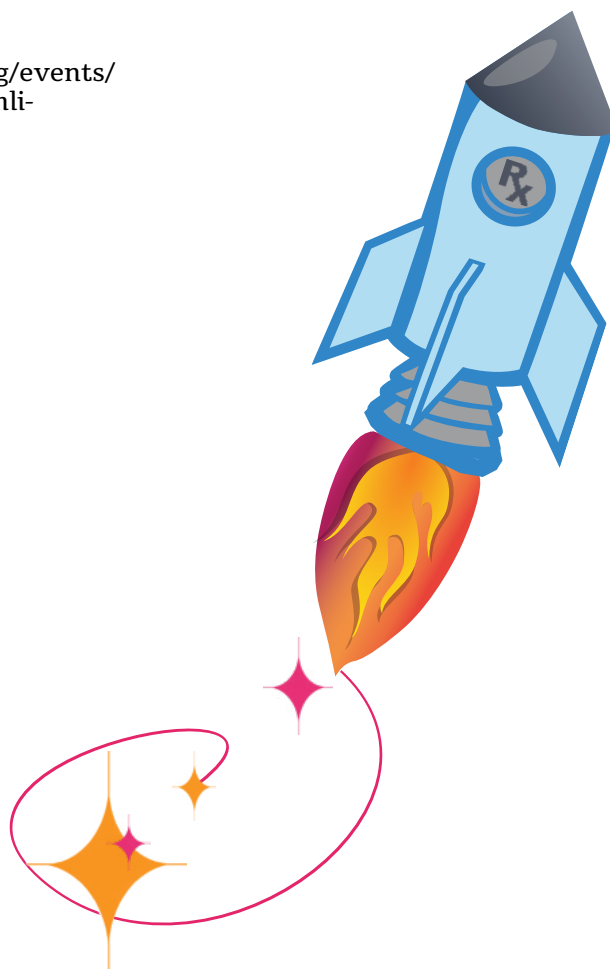
UANs: 0468-0000-17-001-L01-P
0468-0000-17-006-L01-T

**Michael Bottorff, PharmD, FCCP,
FNLA, CLS**

This activity is provided by the
Medical Learning Institute, Inc.
and is supported by educational
grants from Novartis Pharmaceuti-
cals Corporation and Relypsa, Inc.,
a Vifor Pharma company.

For full program information
please go to:

[http://www.ichpnet.org/events/
annual_meeting/2017/mli-
9.14.2017.pdf](http://www.ichpnet.org/events/annual_meeting/2017/mli-9.14.2017.pdf)





KEYNOTE SESSION

1:10PM - 3:00PM

Terrace & Venetian Rooms

ADVANCING INNOVATION IN PHARMACY PRACTICE: WORKING AT THE TOP OF OUR LICENSES

At the end of this presentation, **pharmacist** participants should be able to:

1. Explain the value that pharmacists and pharmacy technicians bring to both the profession and the public when they work at the top of their licenses.
2. Describe recent innovations in pharmacist care.
3. List current barriers in State pharmacy practice acts that prevent expanded pharmacist care.
4. Discuss the expanded use of pharmacy technicians in hospitals and health-systems.
5. Identify opportunities to expand pharmacist care.

At the end of this presentation, **technician** participants should be able to:

1. Explain the value that pharmacists and pharmacy technicians bring to both the profession and the public when they work at the top of their licenses.
2. Describe recent innovations in pharmacist care.
3. List current barriers in State pharmacy practice acts that prevent expanded pharmacist care.
4. Discuss the expanded use of pharmacy technicians in hospitals and health-systems.
5. Identify opportunities to expand pharmacist care.

Type of Activity: Knowledge-based
1.5 contact hour (0.150 CEU)

UANS: 0121-0000-17-071-L04-P
0121-0000-17-071-L04-T

Alex Adams, PharmD, MPH;
Despina Kotis, PharmD, FASHP;
Michael Mone, BS Pharm, JD

TRACK 1

MANAGEMENT SESSION

4:30PM - 5:15PM

Terrace Room

SHOW ME THE MONEY! AP- PROACHES TO COST SAVINGS AND REVENUE GENERATING INITIATIVES

At the end of this presentation, **pharmacist** participants should be able to:

1. List methods to identify variation in drug utilization and potential opportunities through internal and external resources
2. Describe specific cost savings/revenue generating initiatives that were implemented and key lessons learned through the process
3. Review examples of electronic drug cost awareness tools that may guide providers to cost effective medication selections at the point of order entry

At the end of this presentation, **technician** participants should be able to:

1. List methods to identify differences in drug usage and potential opportunities
2. Describe specific cost savings/revenue generating initiatives and key lessons learned during the implementation process
3. Review examples of how electronic order entry can be used to guide providers to cost effective medication selections

Type of Activity: Knowledge-based
0.75 contact hour (0.075 CEU)

UANS: 0121-0000-17-072-L04-P
0121-0000-17-072-L04-T

Arati Kurani, PharmD, BCPS;
Russell J. Orr, PharmD, MBA;
Sara Stahle, PharmD, BCPS

5:15PM - 6:00PM

Terrace Room

LEAN INTO PHARMACY PRO- CESS IMPROVEMENT - SIX SIGMA/LEAN TOOLS FOR EV- ERYDAY USE

At the end of this presentation, **pharmacist** participants should be able to:

1. Describe the DMAIC process
2. Distinguish between Lean and Six Sigma
3. Discuss the lean and six sigma tools to Pharmacy related projects

At the end of this presentation, **technician** participants should be able to:

1. Describe the DMAIC process
2. Distinguish between Lean and Six Sigma
3. Discuss the lean and six sigma tools to Pharmacy related projects

Type of Activity: Knowledge-based
0.75 contact hour (0.075 CEU)

UANS: 0121-0000-17-073-L04-P
0121-0000-17-073-L04-T

Zahra Khudeira, PharmD, MA,
BCPS, CPPS;
Kristi Stice, PharmD, BCPS

ABOUT OUR KEYNOTES



Michael Mone, BS Pharm, JD

Prior to his transition to the position of vice president; associate general counsel, regulatory; where he serves as regulatory counsel to various Cardinal Health business units, Michael was vice president of anti-diversion and senior regulatory counsel for Cardinal Health. In that position, Michael was responsible for the continuous improvement of the company's anti-diversion initiative to identify and stop supply chain diversion of controlled substances at the customer level.

He was also responsible for developing and coordinating company responses to regulatory assessments of the anti-diversion initiative.

Moné joined Cardinal Health in May 2006 as director of regulatory compliance for Medicine Shoppe International (MSI) where he was responsible for licensing and registration of franchise and company-owned pharmacies, educating MSI pharmacies on state and federal law and regulatory changes, and he also developed a regulatory compliance program that provides an early warning system to potential compliance issues.

As a licensed pharmacist and lawyer, Moné has served in a variety of roles in private and public practice of law and pharmacy prior to joining Cardinal Health. From 1996 to 2004, he led the Kentucky Board of Pharmacy where he developed statewide public health policy and was in charge of all investigative efforts for the agency. He also served as an attorney for the Florida Board of Pharmacy. In addition, Moné has served as an assistant attorney general in Florida as the general counsel for the Boards of Chiropractic, Osteopathic Medicine, Veterinary Medicine and Pilot Commissioners. In private practice, he served as both legal counsel representing clients in federal regulatory matters, as well as a pharmacist in both the

hospital and independent retail pharmacy settings. Moné has also published multiple works on the topics of pharmacy and law. He attended the University of Florida where he received both his Juris Doctorate and Bachelor of Science in pharmacy.

Moné has held leadership roles within many industry associations, including the National Association of Boards of Pharmacy, Ohio State Board of Pharmacy, where he currently serves as its President, Accreditation Council for Pharmacy Education, U.S. Pharmacopeia, American Pharmacists Association and Florida Pharmacy Association. He also served on the Kentucky Governor's Task Force on Controlled Substance Abuse and the Attorney General's Task force to develop KASPER, the Kentucky All Schedule Prescription Electronic Reporting System, which tracks controlled substance prescriptions dispensed within the state to stop abuse, misuse, diversion and illegal sale of prescription drugs.

Headquartered in Dublin, Ohio, Cardinal Health is a \$91 billion healthcare services company that improves the cost-effectiveness of healthcare. As the business behind healthcare, Cardinal Health helps pharmacies, hospitals, ambulatory surgery centers, clinical laboratories and physician offices focus on patient care while reducing costs, enhancing efficiency and improving quality. Cardinal Health is an essential link in the healthcare supply chain, providing pharmaceuticals and medical products and services to more than 100,000 locations each day and is also the industry-leading direct-to-home medical supplies distributor. The company is a leading manufacturer of medical and surgical products, including gloves, surgical apparel and fluid management products. In addition, the company operates the nation's largest network of radiopharmacies that dispense products to aid in the early diagnosis and treatment of disease. Ranked #22 on the Fortune 500, Cardinal Health employs 33,000 people worldwide. More information about the company may be found at cardinalhealth.com and @CardinalHealth on Twitter.



Alex Adams, PharmD, MPH

Alex Adams, PharmD, MPH, is Executive Director of the Idaho State Board of Pharmacy. In this capacity, his primary role is to promote, preserve and protect the health, safety, and welfare of the public by and through the effective control and regulation of the practice of pharmacy in the state of Idaho.

Prior to this, he served as Vice President of Pharmacy Programs at the National Association of Chain Drug Stores (NACDS), a Washington, DC-area trade association that represents 40,000 pharmacies in the United States.

Dr. Adams received his Bachelor of Science and Doctor of Pharmacy degrees from the University of Toledo, graduating as class valedictorian. He received his Masters of Public Health degree from Johns Hopkins University.

Dr. Adams was honored with the Albert B. Prescott Pharmacy Leadership Award in 2015. Dr. Adams has been Executive Director of the Board of Pharmacy since August of 2015.



Despina Kotis, PharmD, FASHP

Dr. Desi Kotis is Director of Pharmacy, Northwestern Medicine and Adjunct Instructor of Pharmacy Practice at Chicago College of Pharmacy Midwestern University.

Dr. Kotis received her Bachelor of Science in Pharmacy at the University of Illinois, where she also received her Doctorate of Pharmacy. She completed a pharmacy residency at Northwestern Memorial Hospital. Dr Kotis was appointed fellow of ASHP in 2013 and received the President's award from the Illinois Council of Health -System Pharmacists in 2015. Dr Kotis is also a board member of the Illinois State Board of Pharmacy.

Dr. Kotis is a strategic academic medical center leader in hospital pharmacy management. She has been integral in expanding the role of the pharmacist and pharmacy technician into an integrated patient centered model in line with the ASHP PPMI. She is Director at Large of the Vizient Academic Medical Center Pharmacy Network.



TRACK 2 CLINICAL SESSION

4:30PM - 5:15PM

Venetian Room

PAIN STEWARDSHIP: IMPLEMENTING AN INSTITUTIONAL APPROACH TO PAIN MANAGEMENT

At the end of this presentation, **pharmacist** participants should be able to:

1. Describe contributors to current opioid epidemic
2. Discuss regulatory oversight efforts related to opioids
3. List three goals of a pain stewardship program
4. Explain an approach for garnering institutional support

At the end of this presentation, **technician** participants should be able to:

1. Describe contributors to current opioid epidemic
2. Discuss regulatory oversight efforts related to opioids
3. List three goals of a pain stewardship program
4. Explain an approach for garnering institutional support

Type of Activity: Knowledge-based
0.75 contact hour (0.075 CEU)

UANs: 0121-0000-17-074-L04-P
0121-0000-17-074-L04-T

Randall Knoebel, PharmD, BCOP

5:15PM - 6:00PM

Venetian Room

WHAT'S GOING ON IN ANESTHESIA: PRACTICE UPDATES

At the end of this presentation, **pharmacist** participants should be able to:

1. Explain the current state of neuromuscular reversal and the role of sugammadex
2. Discuss multimodal analgesia in the perioperative setting and the role of IV Acetaminophen
3. Recognize why a comprehensive and interdisciplinary approach to diversion surveillance is necessary in the OR setting

At the end of this presentation, **technician** participants should be able to:

1. Identify medications utilized for reversal of neuromuscular blockade
2. Identify advantages and disadvantages of IV Acetaminophen
3. Recognize practices that prevent drug diversion in the OR setting

Type of Activity: Knowledge-based
0.75 contact hour (0.075 CEU)

UANs: 0121-0000-17-075-L01-P
0121-0000-17-075-L01-T

Julie Golembiewski, PharmD,
FASHP

MEMBERSHIP SPOTLIGHT RECEPTION

6:00PM - 7:00PM

Hosted by the New Practitioners
Network
Foyer

MEMBERSHIP

Spotlight RECEPTION

Hosted by the New Practitioners Network

THURSDAY

9/14/2017

6PM

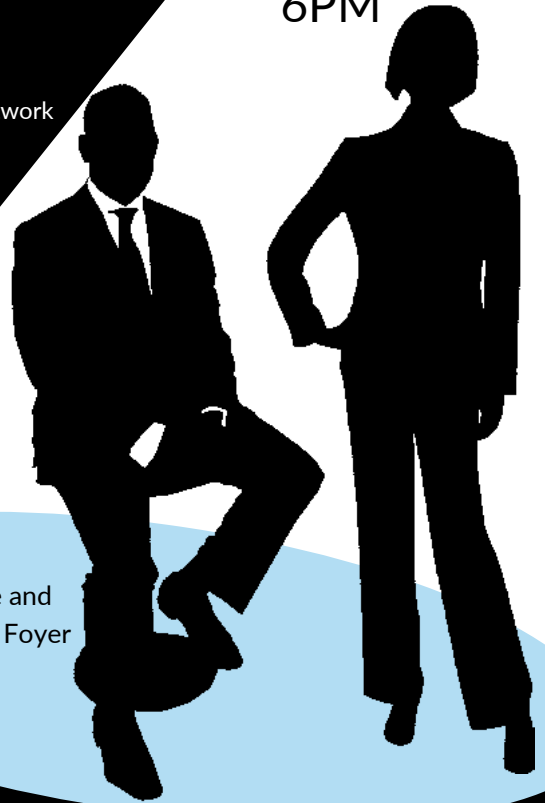
New members, new practitioner members, seasoned members and even non-members are invited to this day-end meet and greet hosted by ICHP's NPN.

Relax with a cold beverage and light snack while networking with other pharmacy professionals.

This reception is open to all ICHP Annual Meeting attendees and will provide an hour to unwind, meet the ICHP Board of Directors and get to know your colleagues a little better.

Don't pass it up!

Drury Lane Theatre and
Conference Center Foyer



FRIDAY, SEPTEMBER 15

This document is frequently updated!
Check ichpnet.org > Events
> Annual Meeting for updates.

LAST UPDATED:
5/24/2017

FRIDAY AT-A-GLANCE

7:00AM - 6:00PM

ICHP REGISTRATION DESK HOURS
Foyer

7:00AM - 8:00AM

CONTINENTAL BREAKFAST
Foyer

8:00AM - 10:00AM

GENERAL SESSIONS
Terrace & Venetian Rooms

8:00AM - 10:00AM

REVERSE EXHIBIT
(invitation only)
Crystal Room

8:00AM - 5:30PM

ASHP RESIDENCY PROGRAM
DESIGN & CONDUCT WORKSHOP (RPDC)
(prior registration required)
English Room

10:00AM - 12:00PM

EXHIBIT PROGRAM & BREAK
Oak & Brook Rooms

12:00PM - 1:15PM

LUNCH & TOWN HALL MEETING
Terrace & Venetian Rooms

1:30PM - 2:30PM

KEYNOTE SESSION
Terrace & Venetian Rooms

2:30PM - 5:30PM

TRACK 1 - PHARMACY
TECHNOLOGY SESSION
Crystal Room

TRACK 2 - CLINICAL SESSION

Venetian Room

3:30PM - 3:45PM

BREAK
Foyer

7:00PM - 9:30PM

PRESIDENT'S DINNER
(invitation only)
Reel Club

7:00AM - 8:00AM

Foyer

CONTINENTAL BREAKFAST

8:00AM - 5:30PM

English Room

**ASHP RESIDENCY PROGRAM
DESIGN & CONDUCT
WORKSHOP (RPDC)**
(prior registration required)
(No CPE provided)

David Warner, PharmD

8:00AM - 10:00AM

Crystal Room

REVERSE EXHIBIT
(invitation only)

GENERAL SESSIONS

8:00AM - 10:00AM

Terrace & Venetian Rooms

TRANSITIONING TO A NEW ERA: THE ROLE OF PHARMACY IN TRANSITIONS OF CARE

At the end of this presentation, **pharmacist** participants should be able to:

1. Describe the role and impact of a Transitions of Care Pharmacist.
2. Evaluate the successes and limitations of a Transitions of Care discharge program.
3. Apply Transitions of Care principles to a real-life patient case.
4. Review barriers to appropriately transitioning the care of patients with infectious diseases in various settings (e.g. from the inpatient setting to the outpatient setting)
5. Illustrate communication and systems strategies that can be used to maintain optimal continuity of care of patients with infectious diseases across healthcare settings

Type of Activity: Application-based
2.0 contact hour (0.2 CEU)

UAN: 0121-0000-17-076-L04-P

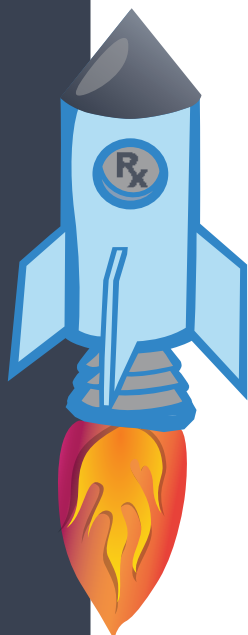
At the end of this presentation, **technician** participants should be able to:

1. Describe the role and impact of the Transitions of Care Discharge Technician.
2. List best practices for management of a bedside delivery service.
3. Review the steps of prior authorization approval.

Type of Activity: Knowledge-based
2.0 contact hours (0.2 CEUs)

UAN: 0121-0000-17-077-L04-T

**Amina Ghalyoun, PharmD;
Milena McLaughlin, PharmD,
MSc, BCPS, AAHVP;
Amulya Murthy, PharmD, BCACP**



10:00AM - 12:00PM

Oak & Brook Rooms

EXHIBIT PROGRAM & BREAK

12:00PM - 1:15PM

Terrace & Venetian Rooms

LUNCH & TOWN HALL MEETING

KEYNOTE SESSION

1:30PM - 2:30PM

Terrace & Venetian Rooms

STANDARDIZE 4 SAFETY: CONCENTRATING ON CONCENTRATIONS

At the end of this presentation, **pharmacist** participants should be able to:

1. Define the Standardize 4 Safety initiative and the phases of the project.
2. Describe why standardization for IV and oral liquid medications is an error reduction strategy.
3. Review considerations that were made for proposed concentrations.
4. Identify what steps you can take to ensure compliance with the initiative at your institution.

At the end of this presentation, **technician** participants should be able to:

1. Define the Standardize 4 Safety initiative and the phases of the project.
2. Describe why standardization for IV and oral liquid medications is an error reduction strategy.
3. Review considerations that were made for proposed concentrations.
4. Identify what steps you can take to ensure compliance with the initiative at your institution.

Type of Activity: Knowledge-based
1.0 contact hour (0.10 CEU)

UANs: 0121-0000-17-078-L05-P
0121-0000-17-078-L05-T

Deborah Pasko, PharmD, MHA



About Deborah Pasko

Dr. Deborah Pasko has been a pharmacist since 1996. She is currently the Director of Medication Safety And Quality at ASHP. Her professional interests are IV and oral liquid standardization, naloxone usage and safety, Enfit connector and syringe design, opioid safety, and antimicrobial stewardship.

Dr. Pasko has been involved in medication safety since becoming a clinical pharmacy specialist in 2003. She chaired the Pediatric Medication Safety committee at the University of Michigan from 2009-2014 and was also a voting member of the Adult Medication Safety committee during the same time frame. In 2012 Dr. Pasko became an active member representing CS Mott Children's Hospital in the Solutions for Patient Safety consortium, which to date has over 80 children's hospitals as active members. She has led pediatric and adult initiatives around ADE and HAC/HAI work in addition to being the lead pharmacist for pump library builds and an administrative team lead for the Epic EHR design, build and implementation.

Dr. Pasko's expertise includes being a project manager and large project coordination over clinical, operational, and technology initiatives. She was also an intermittent consultant for the medication safety team at the Joint Commission and understands rules and regulations within hospital systems. Dr. Pasko also received LEAN training and certification through the University of Michigan and acts as a LEAN coach at ASHP and previously at UMHS and JC.

TRACK 1 – PHARMACY TECHNOLOGY SESSION

2:30PM - 3:30PM

Crystal Room

TRACK AND TRACE

At the end of this presentation, **pharmacist** participants should be able to:

1. TBA
2. TBA
3. TBA

At the end of this presentation, **technician** participants should be able to:

1. TBA
2. TBA
3. TBA

Type of Activity: Knowledge-based

1.0 contact hour (0.10 CEU)

UANS: 0121-0000-17-079-L04-P

0121-0000-17-079-L04-T

Joseph P Simon, PharmD

3:30PM - 3:45PM

Foyer

BREAK

3:45PM - 4:30PM

Crystal Room

OPTIMIZING MEDICATION DISTRIBUTION USING AUTOMATED DISPENSING CABINETS

At the end of this presentation, **pharmacist** participants should be able to:

1. Describe the four major types of medication distribution models
2. Review the primary functionality of automated dispensing cabinets and their impact on pharmacy operations
3. Explain the methods and metrics that can be used to monitor and optimize the medications available within an automated dispensing cabinet

At the end of this presentation, **technician** participants should be able to:

1. Describe the four major types of medication distribution models
2. Review the primary functionality of automated dispensing cabinets and their impact on pharmacy operations
3. Explain the methods and metrics that can be used to monitor and optimize the medications available within an automated dispensing cabinet

Type of Activity: Knowledge-based

0.75 contact hour (0.075 CEU)

UANS: 0121-0000-17-080-L04-P

0121-0000-17-080-L04-T

Anthony Scott, PharmD

4:30PM - 5:30PM

Crystal Room

INFORMATICS PEARLS 2017

- OPTIMIZING TRIGGER TOOLS FOR THE DETECTION OF ADVERSE DRUG EVENTS
- CLEAR CONCISE TITRATION ORDERS
- BASICS OF ELECTRONIC PRESCRIBING OF CONTROLLED SUBSTANCES

At the end of this presentation, **pharmacist** participants should be able to:

1. Describe the qualities of an effective trigger tools to optimize adverse drug event detection rates.
2. Explain the required parameters of a titration order.
3. Recognize the requirements for identity proofing and dual factor authentication for EPCS

At the end of this presentation, **technician** participants should be able to:

1. Describe the qualities of an effective trigger tools to optimize adverse drug event detection rates.
2. Explain the required parameters of a titration order.
3. Recognize the requirements for identity proofing and dual factor authentication for EPCS

Type of Activity: Knowledge-based

1.00 contact hour (0.100 CEU)

UANS: 0121-0000-17-081-L04-P

0121-0000-17-081-L04-T

Arturo Aguirre, PharmD;
Michelle Geurink, RPh

TRACK 2 – CLINICAL SESSION

2:30M - 3:30PM

Venetian Room

HIV 30 YEARS LATER: WHERE WE WERE AND WHERE WE'RE GOING

At the end of this presentation, **pharmacist** participants should be able to:

1. List recent changes in the DHHS HIV Guidelines.
2. Identify differences between tenofovir disoproxil fumarate (TDF) and tenofovir alafenamide (TAF).
3. Discuss updates regarding HIV Pre-exposure Prophylaxis (PrEP).
4. Identify potential new antiretroviral (ARV) mechanisms of action and routes of administration.
5. Discuss opportunities for Pharmacist integration within an ambulatory care HIV/ID clinic.

At the end of this presentation, **technician** participants should be able to:

1. List recent changes in the DHHS HIV Guidelines.
2. Identify differences between tenofovir disoproxil fumarate (TDF) and tenofovir alafenamide (TAF).
3. Discuss updates regarding HIV Pre-exposure Prophylaxis (PrEP).

Type of Activity: Knowledge-based
1.0 contact hour (0.1 CEU)

UANs: 0121-0000-17-082-L02-P
0121-0000-17-082-L02-T

Renata Smith, PharmD, AAHIVP

3:45PM - 4:30PM

Venetian Room

FOURIER LETTERS, PCSK9, IMPACTING LIPID MANAGEMENT

At the end of this presentation, **pharmacist** participants should be able to:

1. Describe the mechanism of PCSK9 inhibitors in lipid management
2. Review updates to literature regarding PCSK9 inhibitors
3. Select patients in which PCSK9 use is appropriate, considering both clinical and financial factors

At the end of this presentation, **technician** participants should be able to:

1. Describe the mechanism of PCSK9 inhibitors in lipid management
2. Explain appropriate storage and administration of PCSK9 inhibitors
3. Discuss potential barriers for a patient to access and fill a prescription for a PCSK9 inhibitor

Type of Activity: Knowledge-based
0.75 contact hour (0.075 CEU)

UANs: 0121-0000-17-083-L01-P
0121-0000-17-083-L01-T

Erika Hellenbart, PharmD, BCPS

3:30PM - 3:45PM

Foyer

BREAK

4:30PM - 5:30PM

Venetian Room

BIOSIMILARS: IS THE FUTURE SAFER, MORE COST-EFFECTIVE, AND EFFICACIOUS?

At the end of this presentation, **pharmacist** participants should be able to:

1. Define biosimilars and explain the difference between biologics and generic drugs.
2. Review the regulatory process for biosimilars by the FDA.
3. Discuss the benefits and concerns of implementation of biosimilars into practice.

At the end of this presentation, **technician** participants should be able to:

1. Define biosimilars and explain the difference between biologics and generic drugs.
2. Review the regulatory process for biosimilars by the FDA.
3. Discuss the benefits and concerns of implementation of biosimilars into practice.

Type of Activity: Knowledge-based
1.0 contact hour (0.10 CEU)

UANs: 0121-0000-17-084-L01-P
0121-0000-17-084-L01-T

Daniel Wojenski, PharmD, BCPS, BCOP

7:00PM - 9:30PM

Reel Club

PRESIDENT'S DINNER
(invitation only)



SATURDAY AT-A-GLANCE

7:00AM - 3:15PM

ICHP REGISTRATION DESK HOURS
Foyer

7:00AM - 8:00AM

CONTINENTAL BREAKFAST
Foyer

8:00AM - 11:30AM

TRACK 1 - TECHNICIAN SESSION
English Room

8:00AM - 11:30AM

TRACK 2 - PHARMACY
PRACTICE SESSION
Crystal Room

8:00AM - 11:30AM

TRACK 3 - STUDENT SESSION
Venetian Room

11:30AM - 1:00PM

LUNCH & AWARDS PROGRAM
Terrace Room

1:00PM - 3:00PM

KEYNOTE AND CLOSING
GENERAL SESSION
Crystal Room

1:00PM - 3:00PM

RESIDENCY SHOWCASE
Oak & Brook Rooms

7:00AM - 8:00AM

Foyer

CONTINENTAL BREAKFAST

TRACK 1 TECHNICIAN SESSION

8:00AM - 9:15AM

English Room

MEDICATION SAFETY - BEST PRACTICES AND TIPS TO PREVENT ERRORS

At the end of this presentation,
pharmacist participants should be
able to:

1. Describe those situations that
create the conditions for med-
ication errors
2. Describe common causes of
medication errors
3. Name three practical tips to
preclude medication errors
4. List three best practice goals

At the end of this presentation,
technician participants should be
able to:

1. Describe those situations that
create the conditions for med-
ication errors
2. Describe common causes of
medication errors
3. Name three practical tips to
preclude medication errors
4. List three best practice goals

Type of Activity: Knowledge-based

1.25 contact hours (0.125 CEUs)

UANs: 0121-0000-17-085-L05-P
0121-0000-17-085-L05-T

Alan Mancini, RPh

9:30AM - 10:30AM

English Room

AN INNOVATIVE ROLE FOR TECHNICIANS TO POSITIVELY IMPACT THE ACCURACY OF PATIENT MEDICATION LISTS PRIOR TO ADMISSION

At the end of this presentation,
pharmacist participants should be
able to:

1. Recognize the importance of
the evaluation of home medi-
cation lists at your institution.
2. Identify tools and skills that
you can apply at your facil-
ity to improve the accuracy of
home medication lists.
3. Identify opportunities at your
institution to utilize techni-
cians to obtain accurate medi-
cation lists.

At the end of this presentation,
technician participants should be
able to:

1. Recognize the importance of
accurate home medication
lists.
2. Define and recognize errors
that commonly occur on home
medication lists.
3. Identify tools and skills that
can be utilized to gather an ac-
curate home medication list.

Type of Activity: Knowledge-based
1.0 contact hour (0.1 CEU)

UANs: 0121-0000-17-086-L04-P
0121-0000-17-086-L04-T

Amanda Bentley, CPhT;
Jennifer Ratliff, RPh, BCPS

9:15AM - 9:30AM

Foyer

BREAK



10:30AM - 11:30AM

English Room

THE ABCs OF USP:

UNDERSTANDING 800

At the end of this presentation, **pharmacist** participants should be able to:

1. Describe communication strategies used to educate staff on practice changes associated with USP 800
2. Identify the differences in the NIOSH groups and the implications for handling
3. Describe engineering controls and personal protective equipment (PPE)
4. List the differences between deactivation, decontamination, cleaning, and disinfection

At the end of this presentation, **technician** participants should be able to:

1. Describe communication strategies used to educate staff on practice changes associated with USP 800
2. Identify the differences in the NIOSH groups and the implications for handling
3. Describe engineering controls and personal protective equipment (PPE)
4. List the differences between deactivation, decontamination, cleaning, and disinfection

Type of Activity: Knowledge-based
1.0 contact hour (0.10 CEU)

UANs: 0121-0000-17-087-L03-P
0121-0000-17-087-L03-T

Katie Gauen, PharmD

TRACK 2 PHARMACY PRACTICE SESSION

8:00AM - 9:15AM

Crystal Room

RESIDENCY PROJECT PEARLS 2017

At the end of this presentation, **pharmacist** participants should be able to:

1. TBA
2. TBA
3. TBA

Type of Activity: Knowledge-based
1.25 contact hours (0.125 CEUs)
UAN: 0121-0000-17-088-L04-P

9:15AM - 9:30AM

Foyer

BREAK

9:30AM - 11:30AM

Crystal Room

THE CHALLENGES OF C. DIFFICILE AND ANTIMICROBIAL- RESISTANT GRAM-NEGATIVE INFECTIONS: OPPORTUNITIES TO RE-EVALUATE CURRENT MANAGEMENT APPROACHES

At the end of this presentation, **pharmacist** participants should be able to:

1. Explain current trends in local and regional antimicrobial resistance and identify patient risk factors for infection
2. Assess the role of newer antimicrobial agents as part of the armamentarium in the management of infections caused by multidrug-resistant Gram-negative bacteria and *C. difficile*
3. Evaluate the utility of novel approaches that reduce the risk of recurrent *C. difficile* infection in high-risk patients
4. Describe antimicrobial stewardship strategies that aim to minimize the burden of serious bacterial infections in healthcare institutions

Type of Activity: Application-based
2.0 contact hours (0.2 CEUs)
UAN: 0473-9999-17-002-L01-P

Debra Goff, PharmD, FCCP;
James S. Lewis II, PharmD, FIDSA

This activity is jointly provided by The Center for Independent Healthcare Education and Vemco MedEd; and is supported by an educational grant from Merck.

For full program information, please go to http://www.ichpnet.org/events/annual_meeting/2017



TRACK 3 STUDENT SESSION

8:00AM - 11:30AM

Venetian Room

THE VIBRANT SHUFFLE ON THE PATH TO A RESIDENCY: GETTING THE INSIDE LOOK AT THE PROCESS AND PEOPLE INVOLVED

- KEY TO A TOP CURRICULUM VITAE
- KEY TO A TOP LETTER OF INTENT
- GENERAL PGY-1 INFO: WHAT ARE YOUR OPTIONS IN AMBULATORY CARE AND COMMUNITY PRACTICE
- GENERAL PGY-1 INFO: WHAT ARE YOUR OPTIONS IN HOSPITAL AND INDUSTRY
- GETTING READY TO BE INTERVIEWED AND HOW TO CONDUCT YOURSELF AT THE MIDYEAR/SHOWCASE
- THE MATCH PROCESS/POST MATCH SCRAMBLE AND PHORCAS
- GET THE INSIDE SCOOP FROM A RESIDENCY PRECEPTOR
- GET THE INSIDE SCOOP FROM A RESIDENT

Student session is not accredited for CPE.

Jennifer H. Austin-Szwak, PharmD;
Noelle Chapman, PharmD, BCPS;
Christopher W. Crank, PharmD,
MS, BCPS, AQ ID;
Nora Flint, PharmD, FASHP,
BCPS;
Carol Heunisch, PharmD, BCPS;
Bernice Man, PharmD;
Jennifer Phillips, PharmD, BCPS;
Molly Rockstad, PharmD, BCPS,
BCACP;
Tian Sun, PharmD;
Paige Taylor, PharmD;
Susan Winkler, PharmD, BCPS,
FCCP

11:30AM - 1:00PM

Terrace Room

LUNCH & AWARDS PROGRAM

1:00PM - 3:00PM

Oak & Brook Rooms

RESIDENCY SHOWCASE

KEYNOTE AND CLOSING GENERAL SESSION

1:00PM - 2:00PM

Crystal Room

HEALTHCARE: THE NATIONAL PICTURE

At the end of this presentation,
pharmacist participants should be
able to:

1. Describe the current status of federally provided healthcare coverage.
2. Discuss the Congressional efforts to control medication prices.
3. Explain recent changes to the FDA authority to regulate pharmaceuticals.

At the end of this presentation,
technician participants should be
able to:

1. Describe the current status of federally provided healthcare coverage.
2. Discuss the Congressional efforts to control medication prices.
3. Explain recent changes to the FDA authority to regulate pharmaceuticals.

Type of Activity: Knowledge-based
1.0 contact hour (0.1 CEU)

UANs: 0121-0000-17-089-L03-P
0121-0000-17-089-L03-T

Surprise Guest Speaker

2:00PM - 3:00PM

Crystal Room

ARE YOU READY FOR PROVIDER STATUS?

At the end of this presentation,
pharmacist participants should be
able to:

1. Describe current state of pharmacy practice acts relating to provider status and advanced pharmacist scope of practice..
2. Identify policy/regulation/ law changes needed to expand pharmacists' role as a patient care provider.
3. Identify barriers and create a plan to overcome the barriers based off other state's experiences.
4. Develop a plan for next steps to act on preparing for provider status call to action.

At the end of this presentation,
technician participants should be
able to:

1. Describe current state of pharmacy practice acts relating to provider status and advanced pharmacist scope of practice..
2. Identify policy/regulation/ law changes needed to expand pharmacists' role as a patient care provider.
3. Identify barriers and create a plan to overcome the barriers based off other state's experiences.
4. Develop a plan for next steps to act on preparing for provider status call to action.

Type of Activity: Application-based
1.0 contact hour (0.1 CEU)

UANs: 0121-0000-17-090-L03-P
0121-0000-17-090-L03-T

Speaker(s) TBA



FACULTY

This document is frequently updated! Check ichpnet.org > Events > Annual Meeting for updates.

LAST UPDATED: 5/24/2017



Alex J. Adams, PharmD, MPH
Executive Director
Idaho State Board of Pharmacy
Boise, ID



Christopher W. Crank, PharmD, MS, BCPS, AQ ID
Director of Pharmacy Services
Rush University Medical Center
Chicago, IL



Julie Golembiewski, PharmD, FASHP
Clinical Pharmacist, Anesthesia/Pain
University of Illinois Hospital and Health Sciences System
Chicago, IL



Arturo Aquirre, PharmD
Clinical Pharmacist
Northwestern Medicine Lake Forest Hospital
Lake Forest, IL



Nora Flint, PharmD, FASHP, BCPS
Associate Corporate Director; Director, Pharmacy Practice Residency
Department of Pharmacy
Rush University Medical Center
Chicago, IL



Alan Gross, PharmD, BCPS AQ-ID
Clinical Assistant Professor; Infectious Diseases Pharmacist
University of Illinois at Chicago College of Pharmacy; University of Illinois Hospital and Health Sciences System
Chicago, IL



Jennifer H. Austin-Szwak, PharmD
Clinical Pharmacist Specialist, Internal Medicine
University of Chicago Medicine
Chicago, IL



Katie Gauen, PharmD
PGY-2 Resident, Pharmacy Administration
Northwestern Memorial Hospital
Chicago, IL



Margaret Heger, PharmD, BCPS, BCPPS
Pediatric Infectious Disease Pharmacotherapist; PGY2 Pediatric Pharmacy Residency Program Director
Children's Hospital of Illinois
Peoria, IL



Amanda Bentley, CPhT
Pharmacy Technician Specialist
Memorial Medical Center
Springfield, IL



Michelle Geurink, RPh
Pharmacy Informatics Specialist
OSF HealthCare
Peoria, IL



Erika Hellenbart, PharmD, BCPS
Clinical Assistant Professor; Clinical Pharmacist
University of Illinois at Chicago College of Pharmacy; University of Illinois Hospital and Health Sciences System
Chicago, IL



Michael Bottorff, PharmD, FCCP, FNLA, CLS
Professor and Chair, Department of Pharmacy Practice
Manchester College of Pharmacy
Fort Wayne, IN



Amina Ghalyoun, PharmD
Transitions of Care Pharmacist
Sinai Health System
Chicago, IL



Carol Heunisch, PharmD, PCPS
Senior Pharmacy Manager
NorthShore University HealthSystem-Skokie Hospital
Skokie, IL



Noelle Chapman, PharmD, BCPS
Pharmacy Manager; Residency Coordinator
Northwestern Memorial Hospital
Chicago, IL



Debra A. Goff, PharmD, FCCP
Clinical Associate Professor; Infectious Disease Specialist
The Ohio State University Medical Center
Columbus, OH

FACULTY

This document is frequently updated!
Check ichpnet.org > Events
> Annual Meeting for updates.
LAST UPDATED:
5/24/2017



Zahra Khudeira, PharmD, MA, BCPS, CPPS
Medication Safety Officer
Sinai Health System
Chicago, IL



Randall Knoebel, PharmD, BCOP
*Clinical Pharmacy Manager;
Chief Quality Officer,
Department of Pharmacy*
University of Chicago
Medicine
Chicago, IL



Despina Kotis, PharmD, FASHP
Director of Pharmacy
Northwestern Memorial
Hospital
Chicago, IL



Arati Kurani, PharmD, BCPS
*Clinical Coordinator, Drug
Policy and Clinical Resource
Management*
The University of Chicago
Medicine
Chicago, IL



James S. Lewis II, PharmD, FIDSA
*Infectious Diseases Clinical
Pharmacy Coordinator*
Department of Pharmacy
and Infectious Diseases
Oregon Health and Science
University
Portland, OR



Milena McLaughlin, PharmD, MSc, BCPS, AAHIVP
*Assistant Professor of Pharmacy
Practice; HIV/ID Clinical
Pharmacist*
Midwestern University
Chicago College of
Pharmacy;
Northwestern Memorial
Hospital
Downers Grove, IL



Bernice Man, PharmD
*PGY-2 Health-System
Pharmacy Administration
Resident; Chief Resident*
University of Chicago
Medicine
Chicago, IL



Alan Mancini, RPh
*Clinical Instructor, Department
of Biopharmaceutical Sciences*
University of Illinois at
Chicago College of Pharmacy
Chicago, IL



Michael A. Mone, BS Pharm, JD
*VP Associate General Counsel,
Regulatory*
Cardinal Health
Dublin, OH



Amulya Murthy, PharmD, BCACP
Transitions of Care Pharmacist
Sinai Health System
Chicago, IL



Russell J. Orr, PharmD, MBA
Director of Pharmacy
The University of Chicago
Medicine Comer Children's
Hospital
Chicago, IL



Deborah Pasko, PharmD, MHA
*Director of Medication Safety
and Quality*
American Society of Health-
System Pharmacists
Bethesda, MD



Jennifer Phillips, PharmD, BCPS
*Associate Professor, Pharmacy
Practice; Drug Information
Specialist*
Midwestern University
Chicago College of
Pharmacy;
Advocate Lutheran General
Hospital
Downers Grove, IL



Jennifer Pisano, MD
*Assistant Professor of
Medicine in Infectious
Diseases and Antimicrobial
Stewardship Program Medical
Director*
University of Chicago
Medicine
Chicago, IL



Radhika S. Polisetty, PharmD, BCPS AQ-ID, AAHIVP
*Clinical Specialist, Infectious
Diseases; Assistant Professor*
Northwestern Medicine
Central DuPage Hospital;
Midwestern University
Chicago College of Pharmacy
Downers Grove, IL



Jennifer Ratliff, RPh, BCPS
Clinical Pharmacist
Memorial Medical Center
Springfield, IL

FACULTY

This document is frequently updated! Check ichpnet.org > Events > Annual Meeting for updates.

LAST UPDATED: 5/24/2017



Molly Rockstad, PharmD, BCPS, BCACP
Clinical Pharmacist
John H. Stroger Hospital of Cook County
Chicago, IL



Sara Stalhe, PharmD, BCPS
Chief Pharmacy Quality and Medication Safety Officer
The University of Chicago Medicine
Chicago, IL



Daniel Wojenski, PharmD, BCPS, BCOP
Hematology/Oncology Practice Coordinator; PGY-2 Oncology Pharmacy Residency Director
Northwestern Memorial Hospital
Chicago, IL



Lucas Schulz, PharmD, BCPS AQ-ID
Infectious Diseases Clinical Coordinator
University of Wisconsin Hospital and Clinics
Madison, WI



Tian Sun, PharmD
Post-Doctoral Fellow, Regulatory Affairs
Genentech, Inc.
South San Francisco, CA



Anthony Scott, PharmD
Assistant Director of Pharmacy Services
The University of Chicago Medicine
Chicago, IL



Kristi Stice, PharmD, BCPS
Director of Pharmacy
Decatur Memorial Hospital
Decatur, IL



Joseph P. Simon, PharmD
Assistant Director of Pharmacy Information Systems
University of Illinois at Chicago College of Pharmacy
Chicago, IL



Paige Taylor, PharmD
Clinical Pharmacist
University of Chicago Medicine
Chicago, IL



Renata Smith, PharmD, AAHIVP
Clinical Assistant Professor; Clinical Pharmacist
University of Illinois at Chicago College of Pharmacy; University of Illinois Hospital and Health Sciences System
Chicago, IL



David Warner, PharmD
Director, Center on Practice Development
American Society of Health-System Pharmacists
Bethesda, MD



Susan R. Winkler, PharmD, BCPS, BCACP
Professor and Chair, Department of Pharmacy Practice
Midwestern University
Chicago College of Pharmacy
Downers Grove, IL



2017 ICHP ANNUAL MEETING REGISTRATION FORM

Full Name _____
 Badge Name _____
Name as you want displayed on your name badge
 Job Title _____
 Address _____
 City, State, Zip _____
 Home Phone _____
 Email _____
Email required to receive important meeting information
 Business/College Name _____
 City, State _____
 Work Phone _____
 Emergency Contact Name _____
 Emergency Contact Phone _____

CPE MONITOR

If you plan on obtaining CPE credit, you **must** provide your NABP e-Profile ID# and Birthday (as MMDD). Your NABP e-Profile ID is required to receive CPE credit. Visit www.mycpemonitor.net for more information about CPE Monitor and how to obtain your NABP e-Profile ID.

NABP E-Profile ID#: _____ Birthday (MMDD): _____

MEAL SELECTION

We use your registration for space allocation and meal planning. If there is a change in the meals you have indicated, please contact us!

Select the meal(s) you will be attending:

- ☐ Thursday Continental Breakfast*
☐ Thursday Lunch Symposium*
☐ Friday Continental Breakfast (ends at 8:00am)
☐ Friday Lunch & Town Hall Meeting*
☐ Saturday Continental Breakfast
☐ Saturday Lunch & Awards Program*

☐ I need vegetarian meal(s).



*In order to receive the meal, you must attend the full function.

METHOD OF PAYMENT

You will receive a receipt in your registration materials at the meeting. TOTAL PAID \$ _____

- ☐ Enclosed is a check or money order made payable to: ICHP
☐ Charge my credit card

Credit card payments may be faxed to ICHP: (815) 227-9294

Account#: _____

Billing Zip Code: _____ Exp. Date: _____ CVV2 Code: _____

Cardholder Name: _____

Cardholder Signature: _____

I AGREE TO THE FOLLOWING TERMS OF REGISTRATION:

CANCELLATION POLICY: Cancellations will be accepted in writing prior to August 22, 2017. No cancellations will be accepted after that time. A \$25 processing fee will be applied to all cancellations. Refund checks will be issued after October 1, 2017. Note: Payments made to ICHP and ICHP PAC are not deductible charitable contributions for federal income tax purposes. However, they may be deductible under other provisions of the Internal Revenue Code. ICHP Federal Tax ID: #36-2887899.

IMAGE RELEASE NOTICE: I give ICHP permission to use photographs or video of myself taken at the event. ICHP intends to use such photographs and videos only in connection with ICHP official publications, media promotions, web sites, or social media sites including but not limited to Facebook, Twitter, Instagram, and YouTube, and that these images may be used without further notifying me.

SEND PAYMENT AND REGISTRATION FORM TO:

ICHP ANNUAL MEETING • 4055 N. PERRYVILLE ROAD • LOVES PARK, IL 61111-8653
 PHONE: (815) 227-9292 | FAX: (815) 227-9294

FULL REGISTRATION FEES

Full Registration includes education sessions, breakfasts, and lunches.

		MEMBER	NON-MEMBER
PHARMACIST OR INDUSTRY REP		EARLY BIRD DEADLINE: AUGUST 22	
Early Bird Rate	<input type="checkbox"/> \$250	<input type="checkbox"/> \$400	
Regular Rate	<input type="checkbox"/> \$300	<input type="checkbox"/> \$450	
PHARMACY TECHNICIAN			
Early Bird Rate	<input type="checkbox"/> \$100	<input type="checkbox"/> \$150	
Regular Rate	<input type="checkbox"/> \$125	<input type="checkbox"/> \$175	
PHARMACY RESIDENT			
Early Bird Rate	<input type="checkbox"/> \$70	<input type="checkbox"/> \$110	
Regular Rate	<input type="checkbox"/> \$85	<input type="checkbox"/> \$130	
PHARMACY STUDENT			
Early Bird Rate	<input type="checkbox"/> \$55	<input type="checkbox"/> \$80	
Regular Rate	<input type="checkbox"/> \$70	<input type="checkbox"/> \$100	
NON-PHARMACIST HOSPITAL ADMINISTRATOR		Must be accompanied by a member pharmacist	
Early Bird Rate		<input type="checkbox"/> \$150	
Regular Rate		<input type="checkbox"/> \$180	
PHARMACIST / TECHNICIAN OR RESIDENT JOINT		Both must be members.	
Early Bird Rate		<input type="checkbox"/> \$275	
Regular Rate		<input type="checkbox"/> \$325	
Technician/Resident_____			
Work place _____			
Email _____			
<input type="checkbox"/> Technician/Resident needs vegetarian meals			
PHARMACY PRECEPTOR / STUDENT		Both must be members.	
		<input type="checkbox"/> \$260	
		(\$310 after Sept. 1)	
Student _____			
College _____			
Email _____			
<input type="checkbox"/> Student needs vegetarian meals			

ONE DAY REGISTRATION FEES

One Day Registration includes that day's education sessions, breakfasts, and lunches, and exhibits on Thursday and Friday.

Select the day you will be attending:

☐ THURSDAY (9/14) ☐ FRIDAY (9/15) ☐ SATURDAY (9/16)

	MEMBER	NON-MEMBER
PHARMACIST OR INDUSTRY REP		
Early Bird Rate	<input type="checkbox"/> \$100	<input type="checkbox"/> \$150
Regular Rate	<input type="checkbox"/> \$120	<input type="checkbox"/> \$175
PHARMACY TECHNICIAN		
Early Bird Rate	<input type="checkbox"/> \$40	<input type="checkbox"/> \$70
Regular Rate	<input type="checkbox"/> \$55	<input type="checkbox"/> \$85
PHARMACY RESIDENT		
Early Bird Rate	<input type="checkbox"/> \$45	<input type="checkbox"/> \$70
Regular Rate	<input type="checkbox"/> \$60	<input type="checkbox"/> \$85
PHARMACY STUDENT		
Early Bird Rate	<input type="checkbox"/> \$40	<input type="checkbox"/> \$65
Regular Rate	<input type="checkbox"/> \$55	<input type="checkbox"/> \$80
NON-PHARMACIST HOSPITAL ADMINISTRATOR		
<i>Must be accompanied by a member pharmacist</i>		
Early Bird Rate	<input type="checkbox"/> \$75	
Regular Rate	<input type="checkbox"/> \$100	

**EARLY BIRD DEADLINE:
AUGUST 22**

**EARLY BIRD DEADLINE:
AUGUST 22**