




Growing Pharmacy Together

March 20-21, 2015 | St. Charles, Missouri

Syllabus

1 ONE ONE UNIT DOSE AND ONLY




HURRICAINONE

Unit Dose Non-Aerosol Spray
20% Benzocaine Oral Anesthetic
0.5 mL each
ORIGINAL WILD CHERRY FLAVOR

An Innovative Non-Aerosol Unit Dose Topical Anesthetic Spray

- Meets Joint Commission Standard for the most ready-to-administer form available.*
- Fast onset. Short duration. Virtually no systemic absorption.
- Utilizes bar code medication administration (BCMA) to accommodate point-of-care scanning.
- Virtually eliminates adverse events resulting from preventable medication errors, ensuring the "5 Rights" are met: ✓ Right Drug ✓ Right Patient ✓ Right Dose ✓ Right Route ✓ Right Time
- Single unit-of-use packaging eliminates the potential for cross-contamination.
- Increases billing accuracy and improves supply chain costs.

ORDERING INFORMATION

NDC#	AMERISOURCE BERGEN	CARDINAL HEALTH	MCKESSON	MORRIS & DICKSON	PRODUCT
0283-0610-11	10090081	CIN 4362547	1410125	086611	HurriCaine ONE® Unit Dose Non-Aerosol Spray Box of 2, 0.017 fl. oz. (0.5 mL) each
0283-0610-26	10090082	CIN 4363370	1411925	086629	HurriCaine ONE Unit Dose Non-Aerosol Spray Box of 25, 0.017 fl. oz. (0.5 mL) each

If HurriCaine ONE is not yet available through your wholesaler, request it by name and NDC Number.

*Joint Commission Standard: MM.05.01.11, EP4



MAKE THE SWITCH TODAY.

Call 1-800-238-8542 to place your order or for 1 more information. www.beutlich.com

HurriCaine ONE is a registered trademark of Beutlich® Pharmaceuticals, LLC. HCOA 650 1214B

Contents

Acknowledgements	3
Meeting-At-A-Glance	4
Conference Center Map	5
General Meeting Information	6
CPE Credit Instructions	6
Accreditation Information	7
Keynote Speaker	9
Friday	9
Upcoming Events	14
Saturday	15
ICHP Poster Presenters	19
MSHP Poster Presenters	20
Faculty and Disclosures Listing	21
Exhibitor Listing	23
Meeting Sponsors	24

2015 Spring Meeting Planning Committee

Davina Dell-Steinbeck, Co-Chairman	Chris Herndon	Kristin Repp
Travis Hunerdosse, Co-Chairman	Diana Isaacs	Karin Terry
Maggie Allen	Zahra Khudeira	Kate Vautrin
Cassie Heffern	Lisa Lubsch	Trish Wegner
	Scott Meyers	Abby Yancey
	Sara Neiswanger	

2015 Spring Meeting Volunteers

James Matt Baker	Bob Hoy	Bhumi Pathak
Tricia Berry	Tony Huke	Whitney Palecek
Laura Butkievich	Ann Jankiewicz	Jennifer Phillips
Austin Campbell	Paul Juang	Ed Rainville
Jennifer Catlin	Abby Kahaleh	Chris Rivers
Lara Ellinger	Desi Kotis	Carrie Sincak
Jennifer Ellison	Bryan McCarthy	Bryan Shaw
Ginger Ertel	Diane McClaskey	Sarah Sheley
Ana Fernandez	Janene Marshall	Andy Smith
Mike Fotis	Robin Moser	Amanda Stahnke
Linda Fred	Brandon Mullins	Eshan Tavassoli
Jacklyn Harris	Emily Owens	Tara Vickery-Gorden
Hope Herd	Heather Pace	Susan Winkler

ICHP Officers and Board of Directors

Linda Fred, President
Mike Fotis, Immediate Past President
Jennifer Phillips, President-Elect
Ginger Ertel, Treasurer
Charlene Hope, Secretary
Travis Hunerdosse, Director, Educational Affairs
Carrie Vogler, Director, Marketing Affairs
Desi Kotis, Director, Professional Affairs
Kathy Komperda, Director, Organizational Affairs
Kathryn Schutlz, Director, Government Affairs
Mike Weaver, Chairman, House of Delegates
Ana Fernandez, Technician Representative
David Tjho, Chairman, Committee on Technology
Brandi Strader, Chairman, New Practitioners Network
Jacob Gettig, Editor & Chairman, *KeepPosted* Committee
Jennifer Phillips, Assistant Editor, *KeepPosted*
Scott Meyers, Executive Vice President

ICHP Affiliate Presidents

Gary Peksa, Northern Illinois Society
Julia Schimmelpfennig, Metro East Society
Megan Metzke, Sangamiss Society
Ed Rainville, West Central Society
Vacant - President, Rock Valley Society; Southern IL Society, Sugar Creek Society

ICHP Student Chapter Presidents

Maria Laura Ituah, Chicago State University College of Pharmacy
Carolyn Toy, Midwestern University Chicago College of Pharmacy
Courtney Makowski, Roosevelt University College of Pharmacy
Amanda Outinen, Rosalind Franklin University College of Pharmacy
Kimberlee Kabbes, Southern Illinois University Edwardsville School of Pharmacy
Kevin Chang, University of Illinois College of Pharmacy
Neha Kapur, University of Illinois College of Pharmacy - Rockford

ICHP Regional Directors

Noelle Chapman, North
Jennifer Arnoldi, Central
Lynn Fromm, Co-Director South
Tara Vickery-Gordon, Co-Director South

MSHP Officers and Board of Directors

Voting Members

Diane McClaskey, President
Andrew Smith, Past President
Sarah Boyd, President-Elect
Jeremy Hampton, Treasurer
Laura Butkievich, Secretary
Diana Hoelscher, GKCSHP Liaison
Sarah Bledsoe, GKCSHP Liaison
David Wolfrath, MMSHP Liaison
Christy Burrows-Grandstaff, STLSHP Liaison

Non-Voting Committee Chairs and Vice Chairs

Tony Huke, Treasurer-Elect
Paul Juang, R&E Exec. Director

Ashley Simon, Membership Chair
Christine Swyres, Public Policy Chair
David Wolfrath, Public Policy Vice Chair
Justinne Guyton, Education Chair
Kristin Repp, Education Vice Chair
Davina Dell-Steinbeck, Program Chair
Cassie Heffern, Program Vice Chair
Genevieve Smith, Website Chair
Eric McLain, Website Vice Chair
Cassie Heffern, Newsletter Chair
Anastasia Armbruster, Newsletter Vice Chair
Megan Musselman, PPMI Chair
Andy Snyder, PPMI Vice Chair
Evanna Shopoff, Vendor Liaison

Meeting-At-A-Glance

All rooms are located in the St. Charles Convention Center, unless otherwise indicated.

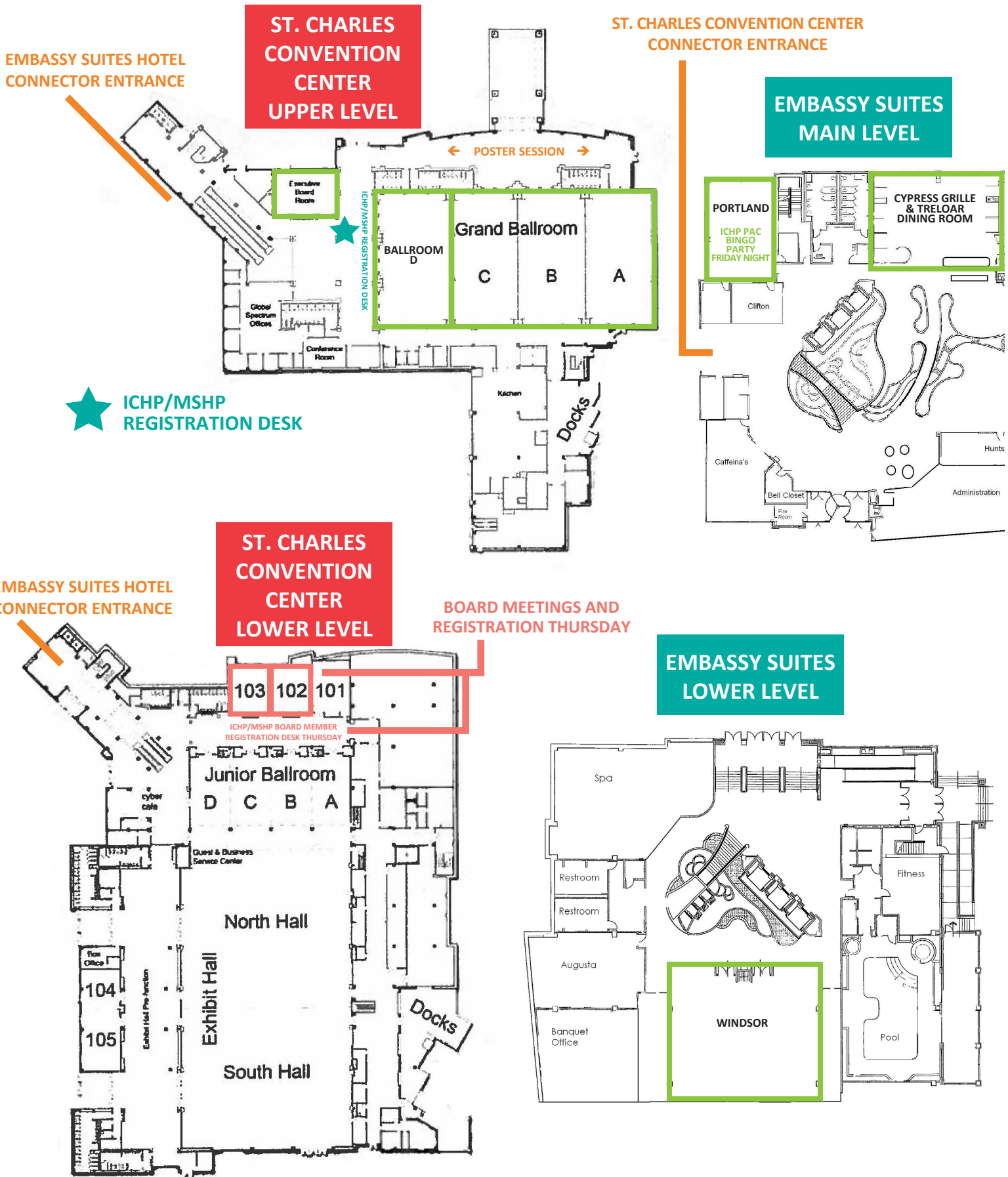
Friday, March 20, 2015

Time	Session/Event	Room
7:00am - 6:30pm	ICHP/MSHP Registration Desk Hours	Foyer
7:00am - 8:30am	MSHP R&E Foundation Best Practice Award Breakfast**	Windsor †
8:00am - 9:00am	Continental Breakfast	Foyer
8:30am - 10:30am	Keynote*	Ballroom D
10:30am - 12:00pm	Exhibit Program and Break	Ballroom ABC
12:00pm - 1:30pm	Lunch Symposium*	Ballroom D
1:30pm - 2:30pm	Track 1: Practice Management Session	Windsor †
1:30pm - 2:30pm	Track 2: Clinical Session	Ballroom D
2:30pm - 4:00pm	Exhibit Program and Break	Ballroom ABC
4:00pm - 5:30pm	Track 1: Practice Management Session	Windsor †
4:00pm - 5:30pm	Track 2: Clinical Session	Ballroom D
5:30pm - 6:30pm	Poster Session (<i>judging</i>)	Foyer
7:00pm - 10:00pm	ICHP Pharmacy Action Fund (PAC) Bingo Party**	Portland †

Saturday, March 21, 2015

Time	Session/Event	Room
7:00am - 5:00pm	ICHP/MSHP Registration Desk Hours	Foyer
7:00am - 8:00am	MSHP Past Presidents' Breakfast (<i>invitation only</i>)	Boardroom
7:00am - 8:30am	ICHP New Practitioners Networking Breakfast	Treloar Dining Room†
7:30am - 9:00am	Continental Breakfast	Foyer
8:00am - 9:00am	Poster Session (<i>judging continues</i>)	Foyer
9:00am - 11:30am	Track 1: Technician Session*	Ballroom B
9:00am - 11:30am	Track 2: Student Session*	Windsor †
9:00am - 11:30am	Track 3: Pharmacy Practice Session*	Ballroom A
11:30am - 1:00pm	MSHP Awards & Installation Lunch	Ballroom C
11:30am - 1:00pm	ICHP Town Hall Lunch	Ballroom D
1:00pm - 3:00pm	Pharmacy Special Interest Session*	Ballroom A
3:30pm - 5:00pm	Illinois Law Session*	Ballroom A
3:30pm - 5:00pm	Missouri Law Session*	Ballroom B

ICHP/MSHP Meeting Rooms



General Meeting Information

Registration

The ICHP/MSHP registration desk is located in the convention center foyer on the upper level, outside Ballroom D. Registration Desk hours are:

► **Friday, March 20**
7:00am - 6:30pm

► **Saturday, March 21**
7:00am - 5:00pm

Name Badges

Badges should be worn at all times as a courtesy to other meeting participants. Your badge is your admission pass for all meeting sessions and exhibits.

Meeting Dress Code

The meeting dress code is business casual. The meeting room temperatures may vary - please remember to bring a sweater or jacket.

Arrangements for Special Assistance

If you have any disability for which you may require an auxiliary aid or special service while attending the meeting, please talk to the ICHP/MSHP staff at the registration desk.

Target Audience

Health-system pharmacists and pharmacy technicians; pharmacy students.

Continuing Pharmacy Education Credit

Education sessions will be offered for continuing pharmacy education (CPE) credit and registrants may earn up to 11 contact hours (0.11 CEUs) at this meeting (GSHP determines the number of credit hours for each session).

As of January 1, 2015, the Pharmacy Technician Certification Board (PTCB) requires technicians to participate in 'T,' or technician-specific continuing education for re-certification or relicensure purposes. However, any Pharmacist or P-specific credit earned by technicians in 2014 will still be accepted for those recertifying in 2015.

CPE Monitor

If you plan on obtaining CPE credit, you must provide your NABP e-Profile ID# and birthday (MMDD) when registering for the meeting. Your NABP e-Profile ID is required to receive CPE credit. Visit www.mycpe-monitor.net for more information about CPE Monitor and how to obtain your NABP e-Profile ID.

Online Evaluations and CPE Credit Instructions

To receive verification of CPE credit, you must complete the online evaluation forms at the following link: <https://www.surveymonkey.com/s/2015march20ce>. Your CPE will be uploaded to your NABP CPE profile where you may then print off your CPE statement of credit. Evaluations must be completed by April 22, 2015. Do not delay in completing your evaluations. You will lose your credit if you miss CPE processing deadlines!

An additional hour of CPE will be available for pharmacists and technicians sponsored by the Medical Learning Institute, Inc. and submitted for credit separately from this event's online evaluation system. You have up to 30 days after the conference to complete the CPE process.

Symposium Meals

To partake in symposiums' meals, meeting attendees must attend the corresponding live programming.

Accreditation



The Georgia Society of Health-System Pharmacists (GSHP) is accredited by the

Accreditation Council for Pharmacy Education as a provider of continuing pharmacy education. Registrants at the 2015 ICHP/MSHP Spring Meeting may earn a maximum of 11 contact hours of continuing pharmacy education in states that recognize ACPE providers. Attendees may earn up to 10 hours through GSHP and 1 hour through the Medical Learning Institute, Inc.

The *Atrial Fibrillation* CE activity is jointly provided by the Medical Learning Institute, Inc. and the Georgia Society of Health-System Pharmacists (GSHP). The Medical Learning Institute, Inc. is accredited by the Accreditation Council for Pharmacy Education as a provider of continuing pharmacy education. For full information, please view the flyer at <http://www.ichpnet.org/spring.php>

ACPE Universal Activity Numbers (UANs)

0228-9999-15-001-L04-P
0228-9999-15-001-L04-T
0228-9999-15-002-L01-P
0228-9999-15-002-L01-T
0228-9999-15-003-L04-P
0228-9999-15-003-L04-T
0468-0000-14-002-L01-P
0468-0000-14-002-L01-T
0228-9999-15-004-L04-P
0228-9999-15-004-L04-T
0228-9999-15-005-L01-P
0228-9999-15-005-L01-T

0228-9999-15-006-L01-P
0228-9999-15-006-L01-T
0228-9999-15-007-L01-P
0228-9999-15-007-L01-T
0228-9999-15-008-L04-P
0228-9999-15-008-L04-T
0228-9999-15-009-L04-P
0228-9999-15-009-L04-T
0228-9999-15-010-L01-P
0228-9999-15-010-L01-T
0228-9999-15-011-L04-P
0228-9999-15-011-L04-T

0228-9999-15-012-L04-P
0228-9999-15-012-L04-T
0228-9999-15-013-L01-P
0228-9999-15-013-L01-T
0228-9999-15-014-L03-P
0228-9999-15-014-L03-T
0228-9999-15-015-L03-P
0228-9999-15-015-L03-T
0468-0000-14-002-L01-P
0468-0000-14-002-L01-T

2015 ICHP/MSHP Spring Meeting Learning Objectives

1. Identify ways to improve communication with healthcare providers within the workplace.
2. Explain the impact of national guideline compliance on patient care.
3. State how pharmacy technician advancement benefits patient care.
4. Define mechanisms to engage students and residents in learning.
5. Describe new rules and regulations in pharmacy practice.
6. Outline management strategies to improve departmental practice.



Time Savings
and Error
Elimination In
Minutes

Intelliguard[®] Kit and Tray Management System

Replenishing medications, checking expiration dates and filling out paperwork for multiple medication kits, multiple times – every day. It adds up to a lot of time... and it's no one's favorite job. Plus, there's a significant risk for human error.

That's why the innovators at MEPS Real-Time[®] developed the smarter, automated kit checking solution.

Our Intelliguard[®] System saves you time and ensures medication kit inventories are complete and accurate so you always have the right drugs, in the right doses – when and where you need them.

For more information:

Phone
760-448-9500

Email
sales@mepsrealtime.com

Web
mepsrealtime.com



Replenish Your Trays Faster Than You
Can Say “Venti Skinny Vanilla Latte”

Stop by Intelliguard[®] booth **302** at the 2015 ICHP/MSHP 2015 Spring Meeting for a demo and we'll give you a Starbucks gift card*

* Free Starbucks gift card limited to the first 50 demonstrations each day at the ICHP/MSHP 2015 Spring Meeting.

© 2011 Starbucks and the Starbucks logo are trademarks or registered trademarks of Starbucks Corporation and is not authorized by, sponsored by, or associated with MEPS, Inc. MEPS[®], MEPS Real-Time[®] and Intelliguard[®] are registered trademarks and RFID Solutions for Critical Inventory[™] is a trademark of MEPS Real-Time, Inc., Carlsbad, CA.

Friday, March 20

Friday At-A-Glance

7:00am - 6:30pm

ICHP/MSHP Registration Desk Hours
Foyer

8:00am - 9:00am

Continental Breakfast
Foyer

7:00am - 8:30am

MSHP R&E Foundation Best Practice Award Breakfast
(separate fee and registration required)
Windsor (located in the Embassy Suites)

8:30am - 10:30am

Keynote
Ballroom D

10:30am - 12:00pm

Exhibit Program and Break
Ballroom ABC

12:00pm - 1:30pm

Lunch Symposium
Ballroom D

1:30pm - 2:30pm

Track 1: Practice Management Session
Windsor (located in the Embassy Suites)

1:30pm - 2:30pm

Track 2: Clinical Session
Ballroom D

2:30pm - 4:00pm

Exhibit Session and Break
Ballroom ABC

4:00pm - 5:30pm

Track 1: Practice Management Session
Windsor (located in the Embassy Suites)

4:00pm - 5:30pm

Track 2: Clinical Session
Ballroom D

5:30pm - 6:30pm

Poster Session (judging)
Foyer

7:00pm - 10:00pm

ICHP Pharmacy Action Fund (PAC) Bingo Party
Portland (located in the Embassy Suites)

7:00am - 8:30am

Windsor (located in the Embassy Suites)
MSHP R&E Foundation Best Practice Award Breakfast
(separate fee and registration required)

8:00am - 9:00am

Continental Breakfast
Foyer

Keynote

8:30am - 10:30am

Ballroom D
Creating a Committed Workforce

At the end of this presentation, **pharmacist** and **technician** participants should be able to:

1. Describe why sustainable excellence rests on the adaptability of the workforce.
2. Discuss why people work and what influences motivation.
3. Explain how your perceptions and your beliefs create your reality, and how changing that reality is a matter of choice.

Type of Activity: Knowledge-based
2.0 credit hours (0.2 CEU)

UANs: 0228-9999-15-001-L04-P
0228-9999-15-001-L04-T

Michael E. Frisina, PhD, MA



Michael E. Frisina, PhD, MA, is an internationally recognized leadership expert, speaker, and author. He has developed leaders and organizational teams worldwide. Every year he speaks to national and international healthcare organizations, non-profit organizations and audiences as diverse as engineers to organ procurement organizations. He is a featured speaker for the American Hospital Association, The American College of Health Care Executives, The Joint Commission, and The South Carolina Hospital Association. His work in healthcare leadership, safety, and quality has been recognized by The Joint Commission in their publication, *Doing the Right Things Right*.

Dr. Frisina retired from the United States Army having served in The Medical Service Corps in a variety of positions of increasing responsibility throughout his career. He completed post-graduate studies at Cambridge University in England, served as a faculty member and subject matter expert in leadership and ethics at the United States Military Academy at West Point, New York and the Uniformed Services University of Health Sciences and School of Medicine, Bethesda, Maryland.

Prior to entering civilian healthcare, Dr. Frisina served as consultant to the Army Surgeon General for medical research and development and to the Department of Defense Human Genome Project. He is a Visiting Fellow in Medical Humanities at the Medical College of Pennsylvania and a Visiting Scholar at The Hastings Center.

Friday, March 20

Lunch Symposium 12:00pm - 1:30pm

Ballroom D

Providing an Exceptional Patient Care Experience: Impact of Pharmacists on Pain Management Outcomes

At the end of this presentation, **pharmacist** participants should be able to:

1. Discuss the impact of pain management on hospital value-based purchasing.
2. Describe transformation of pain assessment from a singular scale to a social transaction.
3. State how to optimize inpatient pain management through pharmacist prescribing of multimodal medications.
4. Explain the role of pharmacists as providers of inpatient pain consults for complex patients.
5. Discuss outcomes related to patient satisfaction, length of stay and pharmacist interventions for pain services.
6. Describe strategies for engaging organizational leadership to support pharmacists in pain management roles.

At the end of this presentation, **technician** participants should be able to:

1. Discuss the impact of pain management on hospital value-based purchasing.
2. Explain how pharmacy technicians and students can help with care transitions for pain medications.
3. Discuss outcomes related to patient satisfaction, length of stay and pain medication interventions.
4. Describe strategies for obtaining support for expanding pain management responsibilities.

Type of Activity: Knowledge-based

1.0 credit hour (0.1 CEU)

UANs: 0228-9999-15-002-L01-P

0228-9999-15-002-L01-T

Virginia L. Ghafoor, PharmD

Track 1 Practice Management Session 1:30pm - 2:30pm

Windsor (located in the Embassy Suites)

Creating a High Reliability Pharmacy Department

At the end of this presentation, **pharmacist** and **technician** participants should be able to:

1. Describe and discuss features of mindful management.
2. Discuss and apply the impact of implications of culture on patient safety.
3. Apply the principles of anticipation and containment to pharmacy practice.
4. Practice completing a safety assessment survey.

Type of Activity: Application-based

1.0 credit hour (0.1 CEU)

UANs: 0228-9999-15-003-L04-P

0228-9999-15-003-L04-T

Charlene Hope, PharmD, BCPS, CPPS

Track 2 Clinical Session 1:30pm - 2:30pm

Ballroom D

Evolving Strategies for Stroke Prevention in Patients with Atrial Fibrillation

At the end of this presentation, **pharmacist** participants should be able to:

1. Examine the importance of evidence-based treatment to mitigate the risk of stroke and other complications.
2. Effectively assimilate knowledge of key stakeholders and NVAF/stroke treatment settings into everyday clinical practice.
3. Compare and contrast effective treatment options for managing patients and improving outcomes in patients with NVAF.
4. Implement strategies to improve adherence in patients receiving anticoagulation therapy and improve.

At the end of this presentation, **technician** participants should be able to:

1. Identify the medications used for anticoagulation therapy.
2. Outline strategies to improve adherence in patients receiving anticoagulation therapy and improve treatment team coordination.

Type of Activity: Knowledge-based

1.0 credit hour (0.1 CEU)

UANs: 0468-0000-14-002-L01-P

0468-0000-14-002-L01-T

Michael Botorff, PharmD, FCCP, FNLA, CLS

Sponsored by the Medical Learning Institute, Inc. and supported by educational grants from Boehringer Ingelheim and Daichii Sankyo, Inc.

For full information, please view the flyer at <http://www.ichpnet.org/spring.php>

Friday, March 20

2:30pm - 4:00pm
Exhibit Program and Break
Ballroom ABC

Track 1
Practice Management
Session
4:00pm - 5:30pm

Windsor (located in the Embassy Suites)

Uh-Oh, You Are the Leader.
What would you do?

At the end of this presentation, **pharmacist** and **technician** participants should be able to:

1. Demonstrate how standardizing practice and leveraging pharmacists across a Health System can help alleviate a staffing crisis.
2. List key steps to delegating effectively.
3. Identify barriers to effective delegation.
4. Illustrate solutions to resolving intimidation.

Type of Activity: Application-based
1.5 credit hours (0.15 CEU)

UANs: 0228-9999-15-004-L04-P
0228-9999-15-004-L04-T

Travis Hunerdosse, PharmD;
Kristin Repp, PharmD, BCPS;
Greg Teale, PharmD, BCPS

Track 2
Clinical Session
4:00pm - 4:30pm

Ballroom D

Updated Clinical Guidelines
for Neuropathic Pain
Pharmacotherapy

At the end of this presentation, **pharmacist** participants should be able to:

1. Recognize common presentation and symptoms of central and peripheral neuropathic pain.
2. Review the new evidence-based guidelines for pharmacotherapy of neuropathic pain.
3. Discuss the recent scientific advancements in individual analgesic tailoring for neuropathic pain.

At the end of this presentation, **technician** participants should be able to:

1. Recognize common presentation and symptoms of central and peripheral neuropathic pain.
2. Review the new evidence-based guidelines for pharmacotherapy of neuropathic pain.
3. Discuss the recent scientific advancements in individual analgesic tailoring for neuropathic pain.

Type of Activity: Knowledge-based
0.5 credit hour (0.05 CEU)

UANs: 0228-9999-15-005-L01-P
0228-9999-15-005-L01-T

Simon Haroutounian, BS Pharm,
MS Pharm, PhD

4:30pm - 5:00pm

Ballroom D

Emerging and Novel Therapies
for Chronic Heart Failure

At the end of this presentation, **pharmacist** participants should be able to:

1. Describe the epidemiological burden of chronic heart failure (HF).
2. Compare and contrast pharmacotherapeutic strategies and novel therapies for chronic heart failure.
3. Identify areas of pharmacist involvement in the design of regimens for chronic HF.

At the end of this presentation, **technician** participants should be able to:

1. Examine the epidemiological burden of chronic heart failure (HF).
2. Compare and contrast pharmacotherapeutic strategies and novel therapies for chronic heart failure.
3. Identify areas of pharmacist involvement in the design of regimens for chronic HF.

Type of Activity: Knowledge-based
0.5 credit hour (0.05 CEU)

UANs: 0228-9999-15-006-L01-P
0228-9999-15-006-L01-T

Jeremy D. Moretz, PharmD, BCPS

Friday, March 20

5:00pm - 5:30pm

Ballroom D

Combating Hepatitis C: A Review of Direct-Acting Antiviral Agents and Their Role in Treatment

At the end of this presentation,
pharmacist and **technician**
participants should be able to:

1. Discuss the current direct-acting antiviral medications available to treat hepatitis C.
2. Describe the adverse drug reactions and drug interactions of the direct-acting antiviral medications.

Type of Activity: Knowledge-based
0.5 credit hour (0.05 CEU)

UANs: 0228-9999-15-007-L01-P
0228-9999-15-007-L01-T

Luke Hvass, PharmD

5:30pm - 6:30pm

Foyer

Poster Session (*judging*)

7:00pm - 10:00pm

Portland (*located in the Embassy Suites*)

**ICHP Pharmacy Action Fund
(PAC) Bingo Party**

(*separate fee and registration required*)

ICHP and MSHP
would like to thank



Booth #202

for their generous
Silver Sponsorship
of the ICHP/MSHP
2015 Spring Meeting



Have fun and support the ICHP Pharmacy Action Fund (PAC) at the same time at a Bingo party with food, drink, and prizes! (Lent friendly menu.)

Friday, March 20, 2015 at 7:00pm

Admission prices:

Pharmacist / Industry Rep \$50

Student / Tech \$25

Not registered for the PAC Bingo Party yet?
Purchase your ticket from the ICHP Staff at the registration desk!

Donations to the ICHP PAC are not deductible as charitable contributions.



Special Events

Congratulations to the **R&E Foundation Best Practice Award Presentation Winner!**

Visit the **MSHP R&E Foundation Silent Auction!**

The auction table is located near the registration desk. Bids will be accepted through 1:30pm on Saturday, March 21.

Facing the reality of empty promises?



Make sure your choice in medication automation will live up to expectations—now and in the future. The proven Omnicell® Unity enterprise platform has delivered for over 1,800 health care facilities. It streamlines workflow by integrating medication, supply, and central pharmacy automation systems on a single database, and keeps your technology up to date through annual software upgrades.

Omnicell—Proven, not just promised.

Best in KLAS Awards - Medical Equipment & Infrastructure Reports, 2006-2014. ©2014 KLAS Enterprises LLC. All rights reserved. www.KLASresearch.com



Omnicell®

Booth #102

Take on Tomorrow

Save the Dates!

ICHP 2015 Annual Meeting

September 10 - 12, 2015

Oakbrook Terrace, IL

MSHP 2016 Spring Meeting

April 21 - 23, 2016

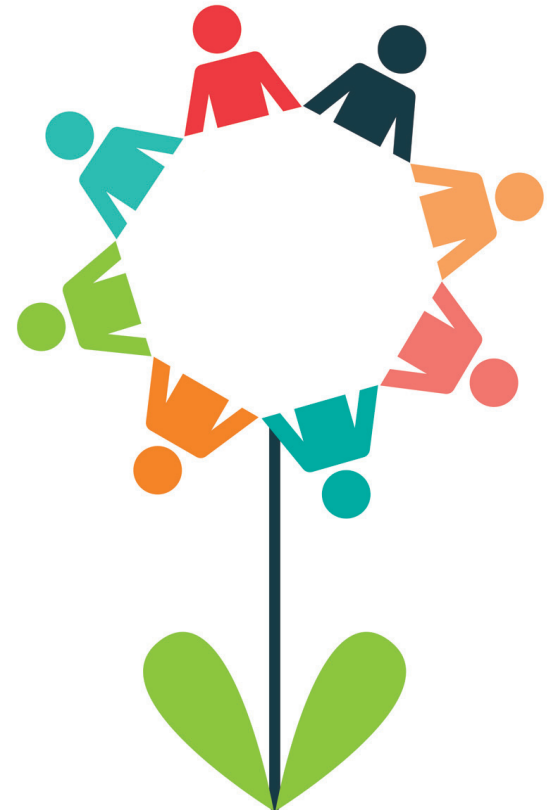
Kansas City, MO

ICHP and MSHP
would like to thank



Booth #201

for their generous
Silver Sponsorship
of the ICHP/MSHP
2015 Spring Meeting



Saturday, March 21

Saturday At-A-Glance

7:00am - 5:00pm
ICHP/MSHP Registration Desk Hours
Foyer

7:00am - 8:00am
MSHP Past Presidents' Breakfast
(invitation only)
Boardroom

7:00am - 8:30am
ICHP New Practitioners
Networking Breakfast
Treloar Dining Room (located in the
Embassy Suites)

7:30am - 9:00am
Continental Breakfast
Foyer

8:00am - 9:00am
Poster Session (judging continues)
Foyer

9:00am - 11:30am
Track 1: Technician Session
Ballroom B

9:00am - 11:30am
Track 2: Student Session
Windsor (located in the Embassy Suites)

9:00am - 11:30am
Track 3: Pharmacy Practice
Session
Ballroom A

11:30am - 1:00pm
MSHP Awards & Installation Lunch
Ballroom C

11:30am - 1:00pm
ICHP Town Hall Lunch
Ballroom D

1:00pm - 3:00pm
Pharmacy Special Interest
Session
Ballroom A

3:30pm - 5:00pm
Illinois Law Session
Ballroom A

3:30pm - 5:00pm
Missouri Law Session
Ballroom B

7:00am - 8:00am
Boardroom
MSHP Past Presidents'
Breakfast (invitation only)

7:30am - 9:00am
Foyer
Continental Breakfast

8:00am - 9:00am
Foyer
Poster Session (judging continues)

Track 1
Technician Session
9:00am - 10:00am
Ballroom B
Utilizing Technicians Outside
the Box to Optimize Patient
Care (panel)

At the end of this presentation,
pharmacist and **technician**
participants should be able to:

1. Discuss various unique roles technicians hold in health-systems across Illinois and Missouri.
2. Describe how innovative technician roles can improve healthcare.

Type of Activity: Knowledge-based
1.0 credit hour (0.1 CEU)
UANs: 0228-9999-15-008-L04-P
0228-9999-15-008-L04-T

Hope Herd, CPhT; Chastity Franklin, CPhT; Michelle Fowler, CPhT; Daniel Hickman, CPhT

10:00am - 10:30am
Break

10:30am - 11:30am
Ballroom B
How Many Meds Could a Check Tech Check if a Check Tech Could Check Meds?

At the end of this presentation,
pharmacist and **technician**
participants should be able to:

1. Interpret the Illinois Pharmacy Practice Act in order to delegate responsibilities to pharmacy technicians in a "tech check tech" program.
2. Describe training programs to ensure competency of technicians performing "tech check tech".
3. Discuss metrics which can be utilized to measure outcomes of a "tech check tech" program.

Type of Activity: Knowledge-based
1.0 credit hour (0.1 CEU)
UANs: 0228-9999-15-009-L04-P
0228-9999-15-009-L04-T

Ana Fernandez, CPhT; Mimi Garrett, CPhT

Track 2
Student Session
9:00am - 10:00am

Windsor (located in the Embassy Suites)
Student Research Panel
This session is not ACPE accredited.

HollyAnn Russell, PharmD Candidate; Chelsey Imel Fritzgerald, PharmD; Jessika Richards, PharmD Candidate; Stephanie Tackett-Berrong, PharmD Candidate

10:00am - 10:30am
Break

Saturday, March 21

10:30am - 11:30am

Windsor (located in the Embassy Suites)

Excel Today, Prepare for Tomorrow - the Other Careers in Health-System Pharmacy

- Industry
- Leadership
- Veteran's Affairs
- Managed Care
- Ambulatory Care
- Home Care
- Specialty Pharmacy
- Informatics
- Academia
- Medication Safety

This session is not ACPE accredited.

Isaac Butler, PharmD, MBA;
Laura Challen, PharmD, BCPS,
MBA; Jacklyn Harris, PharmD,
BCPS; Travis Hunerdosse,
PharmD; Diana Isaacs, PharmD,
BCPS, BC-ADM, CDE; Jon
Lakamp, PharmD, BCPS; Rita
Lakamp, PharmD; Jeff Mullen,
RPh; Jared Sheley, PharmD, BCPS

Track 3 Pharmacy Practice Session 9:00am - 10:00am

Ballroom A

ICHP & MSHP Platform
Presentations

- Effect of new services and related marketing on employee e-prescription capture rate in an academic medical center retail pharmacy
- Vancomycin use and monitoring following rapid testing of bloodstream cultures for *Staphylococci* and oxacillin susceptibility
- *Title pending MSHP information at time of print*
- Evaluation of the impact of warfarin monitoring and dosing by pharmacists on elevated international normalized ratio (INR) results in hospitalized inpatients

At the end of this presentation, **pharmacist** and **technician** participants should be able to:

1. Outline strategies with potential to increase prescription capture rate in an academic medical center retail pharmacy.
2. Describe how rapid testing of *staphylococci* in blood cultures can impact antimicrobial treatment.
3. *Objective pending MSHP information at time of print.*
4. Describe how pharmacist monitoring and/or dosing of warfarin may impact the frequency of elevated INRs in an inpatient setting.

Type of Activity: Knowledge-based
1.0 credit hour (0.1 CEU)

UANs: 0228-9999-15-010-L01-P
0228-9999-15-010-L01-T

Scott J. Bergman, PharmD, BCPS;

Jeremy M. John, PharmD; Bryan
C. McCarthy, PharmD, MS, BCPS;
Michael Santini, PharmD
Candidate; Justin Virtue,
PharmD, CACP

10:00am - 10:30am
Break

Saturday, March 21

10:30am - 11:30am

Ballroom A

Teaching Across the Spectrum of Pharmacy Learners

At the end of this presentation, **pharmacist** and **technician** participants should be able to:

1. Differentiate learning competencies for pharmacy students, PGY1 residents and PGY2 residents.
2. Develop strategies to engage learners throughout the training spectrum.
3. Investigate potential advantages and disadvantages of having students and residents within a clinical service.
4. Discuss effective strategies in integrating learners at multiple levels into a clinical service.

Type of Activity: Application-based
1.0 credit hour (0.1 CEU)

UANs: 0228-9999-15-011-L04-P
0228-9999-15-011-L04-T

Andrew Smith, PharmD, BCPS (AQ-card); Paul Juang, PharmD, BCPS

11:30am - 1:00pm

Ballroom C

MSHP Awards & Installation Lunch

11:30am - 1:00pm

Ballroom D

ICHP Town Hall Lunch

Pharmacy Special Interest Session

1:00pm - 2:15pm

Ballroom A

What We've Got is Failure to Communicate

At the end of this presentation, **pharmacist** and **technician** participants should be able to:

1. Define disruptive behavior as a source of conflict in the workplace.
2. Discuss the reasons why communication can be difficult and the danger of disruptive behavior in the workplace.
3. Describe the steps to take before engaging in a crucial conversation.
4. Define active listening and "coffee cup" conversation.

Type of Activity: Knowledge-based
1.25 credit hours (0.125 CEU)

UANs: 0228-9999-15-012-L04-P
0228-9999-15-012-L04-T

Linda Grider, BS Pharm, MBA

2:15pm - 3:00pm

Ballroom A

Trauma, Code Blue, RSI, Oh My!!! Management of Acute Medical Emergencies

At the end of this presentation, **pharmacist** participants should be able to:

1. Describe strategies for managing acute medical emergencies.
2. List clinical signs and symptoms of patients presenting with an acute medical emergencies.
3. Review available guidelines and evidence based practice for acute medical emergencies.

At the end of this presentation, **technician** participants should be able to:

1. List clinical signs and symptoms of patients presenting with an acute medical emergencies.
2. List available guidelines and evidence based practice for acute medical emergencies.

Type of Activity: Knowledge-based
0.75 credit hour (0.075 CEU)

UANs: 0228-9999-15-013-L01-P
0228-9999-15-013-L01-T

Megan Musselman, PharmD, MS, BCPS; Jeremy Hampton, PharmD, BCPS

3:00pm - 3:30pm
Break

Saturday, March 21

Law Session

3:30pm - 5:00pm

Ballroom A

Illinois Law Update

At the end of this presentation, **pharmacist** and **technician** participants should be able to:

1. Discuss the proposed rule changes to the Illinois Pharmacy Practice Act and what their impact will be on practice.
2. Describe current pharmacy related legislative initiatives before the 99th Illinois General Assembly.
3. Describe the steps that will need to be taken to obtain provider status for pharmacists in Illinois.
4. Discuss current issues discussed by the Illinois Board of Pharmacy.

Type of Activity: Knowledge-based
1.5 credit hours (0.15 CEU)

UANs: 0228-9999-15-014-L03-P
0228-9999-15-014-L03-T

Scott A. Meyers, RPh, MS, FASHP

3:30pm - 5:00pm

Ballroom B

Missouri Law

At the end of this presentation, **pharmacist** and **technician** participants should be able to:

1. Discuss 2014 new and revised statutes and regulations.
2. Explain 2015 proposed legislation and regulations.
3. Express questions, concerns and ideas regarding modified rules/regulations that impact health-system pharmacy practice in Missouri.

Type of Activity: Knowledge-based
1.5 credit hours (0.15 CEU)

UANs: 0228-999-15-015-L03-P
0228-999-15-015-L03-T

Tom Glenski, RPh; Christine Swyres, RPh, BCPS

ICHP and MSHP
would like to thank



People and ideas for innovation in healthcare

Booth #301

for their generous
Silver Sponsorship
of the ICHP/MSHP
2015 Spring Meeting

ICHP Poster Presenters

Original #1 - Research Complete

Title: Erectile Dysfunction Medication Use in Veterans Eligible for Medicare Part D
Submitting Author: Samantha H. Spencer, PharmD

Original #2 - Research in Progress

Title: Descriptive study evaluating the integration of medication management services in a hospital based wound healing center
Submitting Author: Julio A. Rebolledo, PharmD, BCPS

Original #3 - Research in Progress

Title: Outline a weight based methadone dosing algorithm for the treatment of Neonatal Abstinence Syndrome. Can hospital length of stay be impacted?
Submitting Author: Ann M. Corkery, PharmD

Original #4 - Research in Progress

Title: Evaluating Pharmacists' Role in Hepatitis C Treatment
Submitting Author: Kushal Y. Shah, PharmD

Original #5 - Research in Progress

Title: Evaluation of Therapeutic Enoxaparin Anti-Xa Level Monitoring in the Obese Patient Population: A Retrospective Chart Review
Submitting Author: Luke Jeffrey Hvass, PharmD

Original #6 - Research in Progress

Title: Impact of Pharmacists on Interdisciplinary Team Rounding
Submitting Author: Virginia J. Nash, PharmD, BCPS

Original #7 - Research in Progress

Title: Guideline compliance and clinical outcomes among patients with *Staphylococcus aureus* bacteremia with and without Infectious Diseases consultation
Submitting Author: Kevin Buehrle, PharmD

Original #8 - Research in Progress

Title: Comparison of the safety and efficacy for single and multiple tablet first-line regimens for Human Immunodeficiency Virus (HIV)
Submitting Author: Whitney Dickson, PharmD

Encore #1

Title: Use of raltegravir in HIV-infected pregnant women: a case series and review of the literature
Submitting Author: Audrey Galal, PharmD

Encore #2

Title: Pharmacy consults on adult hospitalized patients with delirium
Submitting Author: Ed C. Rainville, MSPHarm

Encore #3

Title: Outreach Program for Members of An ASHP Chapter
Submitting Author: Patricia M. Wegner, BS Pharm, PharmD, FASHP

Encore #4

Title: Impact of PharmD clinic referrals on hemoglobin A1c in an outpatient clinic
Submitting Author: Diana Isaacs, PharmD, BCPS, BC-ADM, CDE

Student #1 - Research Complete

Title: Adherence to IDSA guidelines for the treatment of Uncomplicated Cystitis in a Community Hospital Emergency Department
Submitting Author: Kenneth William Gogol, BS, PharmD candidate at University of Illinois at Chicago - Rockford Campus

Student #2 - Research Complete

Title: Staffing Requirements of PGY1 Pharmacy Residencies in Large Hospitals and PGY2 Pediatric Residencies
Submitting Author: Cody Lloyd Schaefer, PharmD candidate, Southern Illinois University Edwardsville

Student #3 - Research Complete

Title: The Forgotten Transition of Care: Discharge Protocol from Hospital to Community Pharmacy
Submitting Author: Megan Ashley LeBaron, PharmD Candidate, Southern Illinois University Edwardsville

Student #4 - Research Complete

Title: A Business Plan to Enhance Access to Quality Care among Veterans in Rural Communities
Submitting Author: Blaine A. Johnson, PharmD Candidate, Roosevelt University

Student #5 - Research in Progress

Title: Peer Review Opportunities and Training in Illinois Residency and Fellowship Programs
Submitting Author: Rebecca Myers, BS Student Pharmacist, Midwestern University Chicago College of Pharmacy

Student #6 - Research in Progress

Title: Hedgehog and Tyrosine Kinase Inhibitors for Treating Breast Cancer
Submitting Author: Ruchi Patel, PharmD candidate, Chicago State University

Student #7 - Research in Progress

Title: A retrospective chart review of chronic pain medication management
Submitting Author: Lauren Nicole Kormelink, PharmD candidate, Southern Illinois University Edwardsville

MSHP Poster Presenters

Disclaimer: Title and submitting author information for some presentations pending MSHP information at time of print.

Original #1 - Research Complete

Title: Impact of Pharmacist Discharge Counseling on Hospital Consumer Assessment of Healthcare Providers and Systems Survey (H-CAHPS) Scores
Submitting Author: Amanda Lee Troup, PharmD

Original #2 - Research Complete

Title:
Submitting Author: Omik Patel, PharmD

Original #3 - Research in Progress

Title:
Submitting Author: Laurel K. Aaberg, PharmD

Original #4 - Research in Progress

Title:
Submitting Author: Livia Mackley, PharmD

Original #5 - Research in Progress

Title: Comparison of clevidipine versus sodium nitroprusside for treatment of post-operative hypertension in cardiac surgery patients
Submitting Author: Natalie A. Freiburger, PharmD

Original #6 - Research in Progress

Title:
Submitting Author: Divya Merry Daniel, PharmD

Original #7 - Research in Progress

Title:
Submitting Author: Amanda A. Grapperhaus, PharmD

Original #8 - Research in Progress

Title:
Submitting Author: Kara Schaller, PharmD

Original #9 - Research in Progress

Title:
Submitting Author: Steven John Asbill, PharmD

Original #10 - Research in Progress

Title: Evaluation of parenteral iron usage in an inpatient setting
Submitting Author: Alyssa Laurich, PharmD

Original #11 - Research in Progress

Title: Evaluation of glycemic control obtained from NPH insulin in patients experiencing corticosteroid-induced hyperglycemia
Submitting Author: Megan Nicole Hodges, PharmD

Original #12 - Research in Progress

Title:
Submitting Author: Dawnyle Christina Renee Kelley, PharmD

Original #13 - Research in Progress

Title:
Submitting Author: Amanda Jost, PharmD

Original #14 - Research in Progress

Title: The Implementation of a Hypomagnesemia Protocol to Obtain Optimal Magnesium Levels for an Inpatient Population
Submitting Author: Megan Michele Williams

Original #15 - Research in Progress

Title: Retrospective Study of Pharmacist Managed Warfarin Therapy of Inpatients in a Community Hospital
Submitting Author: Kristin B. Peterson, 2017 PharmD Candidate

Encore #1

Title: Multi-step Process for Handling Medication Shortages at an Urban Academic Medical Center
Submitting Author: Lauren Lynn Owens, PharmD Candidate 2015

Encore #2

Title: Validation of a Vancomycin Dosing Protocol in Patients on Intermittent Hemodialysis
Submitting Author: Kate O'Brien Voltz, PharmD

Encore #3

Title: Improving PCA safety in a multi-hospital system using CPOE and smart pump technology
Submitting Author: Richard Wheeler, PharmD, BCPS

Encore #4

Title: Alerts and alarms associated with smart pumps: achieving a healing environment by avoiding annoyances
Submitting Author: Kelly Burch, PharmD

Encore #5

Title:
Submitting Author: Shane Austin, PharmD

Encore #6

Title:
Submitting Author: Ashley Marie Ausmus, PharmD, BCPS

Student #1 - Research Complete

Title: Evaluation of the heart failure education program protocol at an urban safety-net hospital
Submitting Author: Kayla Joyner, PharmD Candidate

Student #2 - Research Complete

Title: Utilizing student pharmacists to increase awareness and implementation of the pharmacy practice model initiative
Submitting Author: Stephanie M. Berrong, PharmD Candidate 2015

Student #3 - Research Complete

Title: Evaluating the Frequency of Intravenous Vasopressor Extravasation Before and After a Reduction in the Standard Vasopressor Drip Concentrations at a Metropolitan Medical Center
Submitting Author: Andrew W. Snyder, PharmD Candidate 2015

Faculty and Disclosures

It is the policy of the Georgia Society of Health-System Pharmacists to ensure balance, objectivity, and scientific rigor in all their individually or jointly presented continuing education programs. All faculty participating in any Georgia Society of Health-System Pharmacists' continuing education programs are expected to disclose any real or apparent conflict(s) of interest that may have any bearing on the subject matter of the continuing education program. Disclosure pertains to relationships with any pharmaceutical companies, biomedical device manufacturers, or other corporations whose products or services are related to the subject matter of the presentation topic.

The intent of this disclosure is not to prevent a speaker with a potential conflict of interest from making a presentation, but to let the audience know about the relationship before the presentation. It is intended that financial interests or affiliations be openly identified so that, with the full disclosure of the facts, the attendees may form their own judgments about the presentation.

There were no apparent conflicts of interest disclosed by our speakers.

Scott J. Bergman, PharmD, BCPS
*Associate Professor, Department of
Pharmacy Practice*
Southern Illinois University
Edwardsville
Edwardsville, IL

**Michael Bottorff, PharmD, FCCP,
FNLA, CLS**
*Professor and Chair, Department of
Pharmacy Practice*
South College School of Pharmacy
Knoxville, TN

Isaac Butler, PharmD, MBA
*Senior Director, Pharmacy Network
Strategy*
Express Scripts
St. Charles, MO

**Laura Challen, PharmD, BCPS,
MBA**
*Assistant Professor; Clinical
Pharmacist*
St. Louis College of Pharmacy;
Barnes Jewish Hospital
St. Louis, MO

Ana Fernandez, CPhT
Pharmacy Technician
Northwestern Memorial Hospital
Chicago, IL

Michelle Fowler, CPhT
*SLE Pharmacy Buyer/SLHS Drug Short-
age Analyst*
St. Luke's Hospital System
Kansas City, MO

Chastity Franklin, CPhT
Pharmacy Technician Specialist
Northwestern Memorial Hospital
Chicago, IL

Michael E. Frisina, PhD, MA
Founder
The Frisina Group
Elgin, SC

Chelsey Imel Fitzgerald, PharmD
Clinical Pharmacist
DePaul Health Center
Collinsville, IL

Mimi Garrett, CPhT
Pharmacy Applications Specialist
OSF Saint Francis Medical Center
Peoria, IL

Virginia L. Ghafoor, PharmD
*Clinical Pharmacy Specialist, Pain
Management*
University of Minnesota Medical
Center-Fairview
Minneapolis, MN

Tom Glenski, RPh
Chief Inspector
Missouri Board of Pharmacy
Jefferson City, MO

Linda Grider, BS Pharm, MBA
Clinical Assistant Professor
University of Illinois at Chicago Col-
lege of Pharmacy
Chicago, IL

Jeremy Hampton, PharmD, BCPS
Assistant Clinical Professor
University of Missouri-Kansas City
School of Pharmacy
Kansas City, MO

**Simon Haroutounian, BS Pharm,
MS Pharm, PhD**
*Assistant Professor of Anesthesiology;
Adjunct Assistant Professor of
Pharmacy*
Washington University School of
Medicine
St. Louis, MO

Jacklyn Harris, PharmD, BCPS
*Clinical Pharmacist; Assistant
Professor of Pharmacy Practice*
Christian Hospital; St. Louis College
of Pharmacy
St. Louis, MO

Hope Herd, CPhT
Sterile Products Supervisor
CoxHealth
Springfield, MO

Daniel Hickman, CPhT
Lead Pharmacy Technician
OSF St. Francis Medical Center, Children's Hospital of Illinois
Peoria, IL

Charlene Hope, PharmD, BCPS, CPPS
Regional Pharmacy Quality and Safety Manager (Chicago Market)
Tenet Healthcare
Chicago, IL

Travis Hunerdosse, PharmD
Pharmacy Manager
Northwestern Memorial Hospital
Chicago, IL

Luke Hvass, PharmD
PGY-2 Internal Medicine Pharmacy Resident
University of Chicago Medicine
Chicago, IL

Diana Isaacs, PharmD, BCPS, BC-ADM
Clinical Pharmacy Specialist, Ambulatory Care; Assistant Professor
Chicago State University College of Pharmacy
Chicago, IL

Jeremy M. John, PharmD
Pharmacy Resident
Christian Hospital
St. Louis, MO

Paul Juang, PharmD, BCPS
Associate Professor of Pharmacy Practice
St. Louis College of Pharmacy
St. Louis, MO

Jon Lakamp, PharmD, BCPS
Vice President, Pharmacy
Mercy Health
St. Louis, MO

Rita Lakamp, PharmD
Medical Science Liaison
Sanofi-Aventis

Bryan C. McCarthy, Pharm.D., MS, BCPS
Interim Director of Ambulatory Care Pharmacy Services
The University of Chicago Medicine
Chicago, IL

Scott A. Meyers, RPh, MS, FASHP
Executive Vice President
Illinois Council of Health-System Pharmacists
Loves Park, IL

Jeremy D. Moretz, PharmD, BCPS
Clinical Pharmacist, Cardiology
Swedish Covenant Hospital
Chicago, IL

Jeff Mullen, RPh
Product Specialist, Epic Rx
SSM Integrated Health Technologies
St. Louis, MO

Megan Musselman, PharmD, MS, BCPS
Clinical Pharmacy Specialist
North Kansas City Hospital
Kansas City, MO

Kristin Repp, PharmD, BCPS
Pharmacy Operations Manager
Saint Luke's North Hospital
Kansas City, MO

Jessika Richards, PharmD Candidate
Student
University of Missouri-Kansas City School of Pharmacy
Independence, MO

HollyAnn Russel, PharmD Candidate
Student
Southern Illinois University
Edwardsville
Edwardsville, IL

Michael Santini, PharmD Candidate
Student
Southern Illinois University
Edwardsville
Edwardsville, IL

Jared Sheley, PharmD, BCPS
Clinical Pharmacy Specialist, Internal Medicine; Clinical Assistant Professor
Southern Illinois University
Edwardsville
Edwardsville, IL

Andrew Smith, PharmD, BCPS (AQ-card)
Clinical Associate Professor
University of Missouri-Kansas City School of Pharmacy
Kansas City, MO

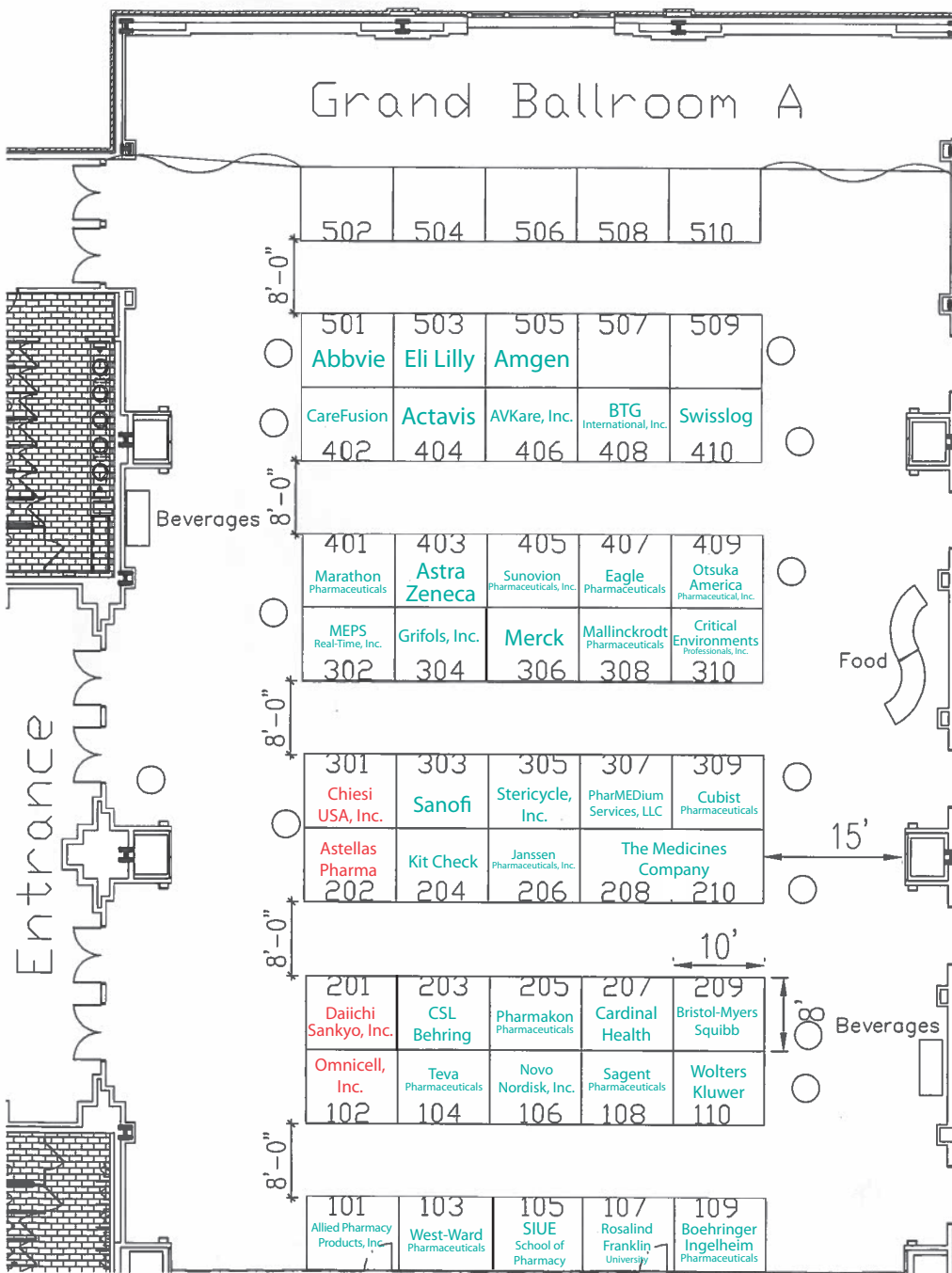
Christine Swyres, RPh, BCPS
Pharmacy Manager
Barnes-Jewish Hospital
St. Louis, MO

Stephanie Tackett-Berrong, PharmD Candidate
Student
St. Louis College of Pharmacy
St. Louis, MO

Greg Teale, PharmD, BCPS
System Pharmacy Director
Saint Luke's North Hospital
Kansas City, MO

Justin Virtue, PharmD, CACP
Pharmacist
CoxHealth
Springfield, MO

Exhibitors



- 501 Abbvie
- 404 Actavis
- 101 Allied Pharmacy Products, Inc.
- 505 Amgen
- 202 Astellas Pharma Silver Sponsor**
- 403 Astra Zeneca
- 406 AVKare, Inc.
- 109 Boehringer Ingelheim Pharmaceuticals
- 209 Bristol-Myers Squibb
- 408 BTG International, Inc.
- 207 Cardinal Health
- 402 CareFusion
- 301 Chiesi USA, Inc. Silver Sponsor**
- 310 Critical Environments Professionals, Inc.
- 203 CSL Behring
- 309 Cubist Pharmaceuticals
- 201 Daiichi Sankyo, Inc. Silver Sponsor**
- 407 Eagle Pharmaceuticals
- 503 Eli Lilly
- 304 Grifols, Inc.
- 206 Janssen Pharmaceuticals, Inc.
- 204 Kit Check
- 308 Mallinckrodt Pharmaceuticals
- 410 Marathon Pharmaceuticals
- 302 MEPS Real-Time, Inc.
- 306 Merck
- 106 Novo Nordisk, Inc.
- 102 Omnicell, Inc. Silver Sponsor**
- 409 Otsuka America Pharmaceutical, Inc.
- 205 Pharmakon Pharmaceuticals
- 307 PharMEDium Services, LLC
- 107 Rosalind Franklin University
- 108 Sagent Pharmaceuticals
- 303 Sanofi
- 105 SIUE School of Pharmacy
- 305 Stericycle, Inc.
- 405 Sunovion Pharmaceuticals, Inc.
- 410 Swisslog
- 104 Teva Pharmaceuticals
- 208/210 The Medicines Company
- 103 West-Ward Pharmaceuticals
- 110 Wolters Kluwer

Thank You to Our Silver Sponsors



astellas

Booth #202



People and ideas for innovation in healthcare

Booth #301



Daiichi-Sankyo

Booth #201



Booth #102